

WAAS CH 42506 W05A	APP CRS 051°	Rwy Idg TDZE Apt Elev	5001 235 236
--	------------------------	-----------------------------	---

RNAV (GPS) RWY 5

COOK COUNTY (15J)

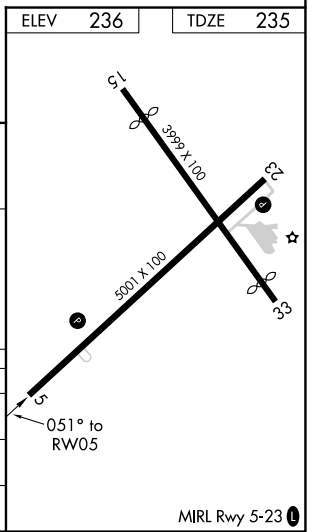
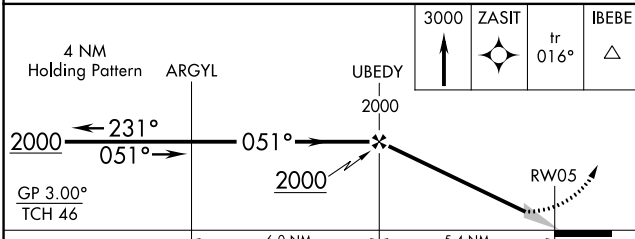
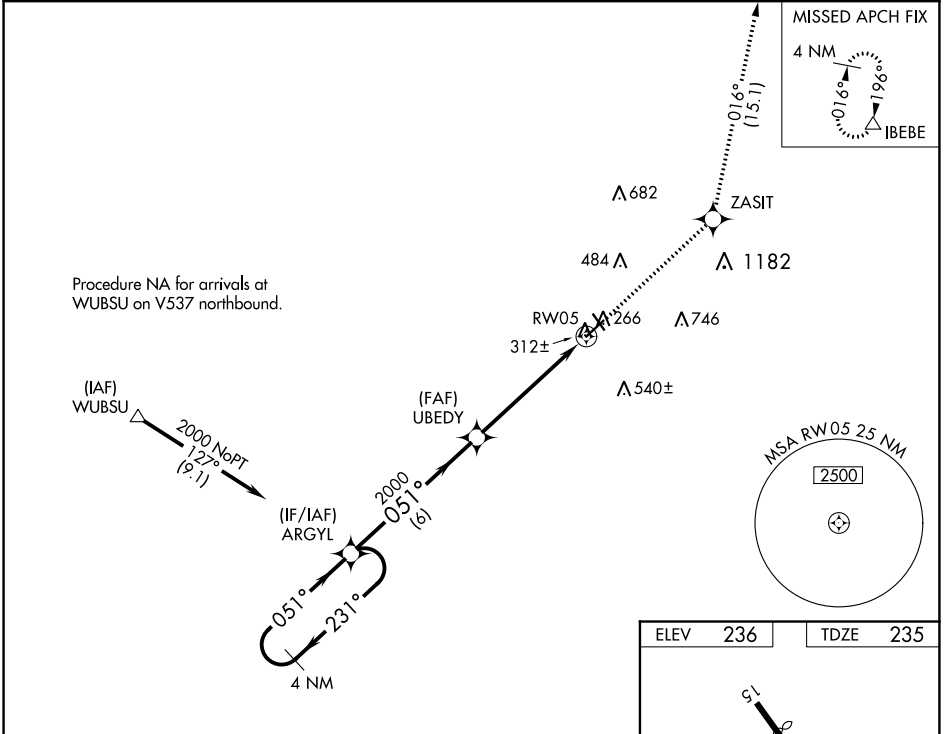
RNP APCH.
 ▼ Baro-VNAV NA. Use Moultrie altimeter setting; when not received, use Valdosta Rgnl altimeter setting and increase all DA 7 feet and all MDA 20 feet.
 ▲ NA

MISSED APPROACH: Climb to 3000 direct ZASIT and on track 016° to IBEBE and hold.

MGR AWOS-3PT
118.925

VALDOSTA APP CON*
126.6 285.6

UNICOM
122.8 (CTAF) 0



CATEGORY	A	B	C	D
LPV DA	536-1 301 (300-1)			
LNAV/VNAV DA	720-1 ½ 485 (500-1 ½)			
LNAV MDA	840-1 605 (700-1)	840-1 ¾ 605 (700-1 ¾)		

SE-4, 08 OCT 2020 to 05 NOV 2020

SE-4, 08 OCT 2020 to 05 NOV 2020