

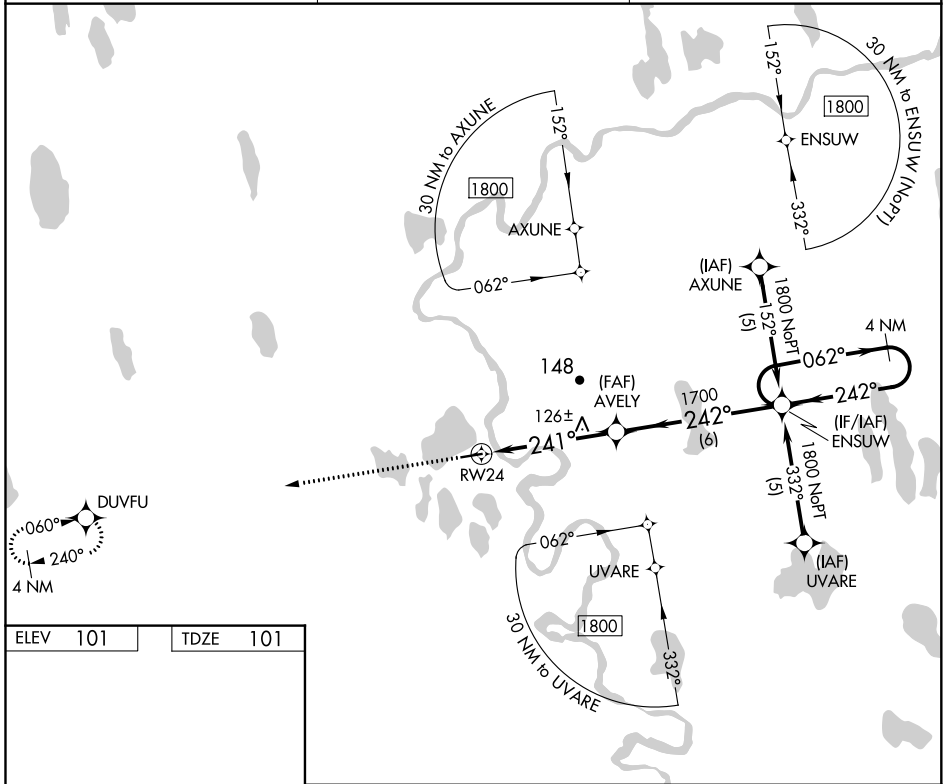
APP CRS 241°	Rwy Idg TDZE Apt Elev	4370 101 101
------------------------	-----------------------------	---

RNAV (GPS) RWY 24

ATQASUK EDWARD BURNELL SR MEMORIAL (ATK)(PATQ)

<p>▽ DME/DME RNP-0.3 NA. ▲ If local altimeter setting not received, use Barrow altimeter setting and increase all MDAs 140 feet. ❄ -43°C VDP NA when using Barrow altimeter setting.</p>	<p>MISSED APPROACH: Climb to 1900 direct DUVFU and hold.</p>
--	--

AWOS-3P 119.925	ANCHORAGE CENTER 135.3 239.25	CTAF 122.9
---------------------------	---	----------------------



ELEV 101	TDZE 101	<p>1900 DUVFU</p> <p>1700 AVELY</p> <p>1800 ENSUW 4 NM Holding Pattern</p> <p>1800</p> <p>062° → ← 242°</p> <p>1 NM to RW24</p> <p>1 NM 3.9 NM 6 NM</p> <p>≤ 3.04° TCH 30</p> <p>241° to RW24</p> <p>4370 X 90</p>			
CATEGORY	A	B	C	D	
LNAV MDA	440-1 339 (400-1)			NA	
CIRCLING	480-1 379 (400-1)	560-1 459 (500-1)	560-1½ 459 (500-1½)	NA	

REIL Rwy 6 and 24
MIRL Rwy 6-24

ATQASUK EDWARD BURNELL SR MEMORIAL (ATK)(PATQ)
70°28'N-157°26'W

RNAV (GPS) RWY 24

AK, 10 SEP 2020 to 05 NOV 2020

AK, 10 SEP 2020 to 05 NOV 2020