

WAAS CH 99412 W31A	APP CRS 311°	Rwy Idg TDZE Apt Elev	4501 2064 2070
--	------------------------	-----------------------------	---

RNAV (GPS) RWY 31

EVELYN SHARP FIELD (ODX)

RNP APCH.

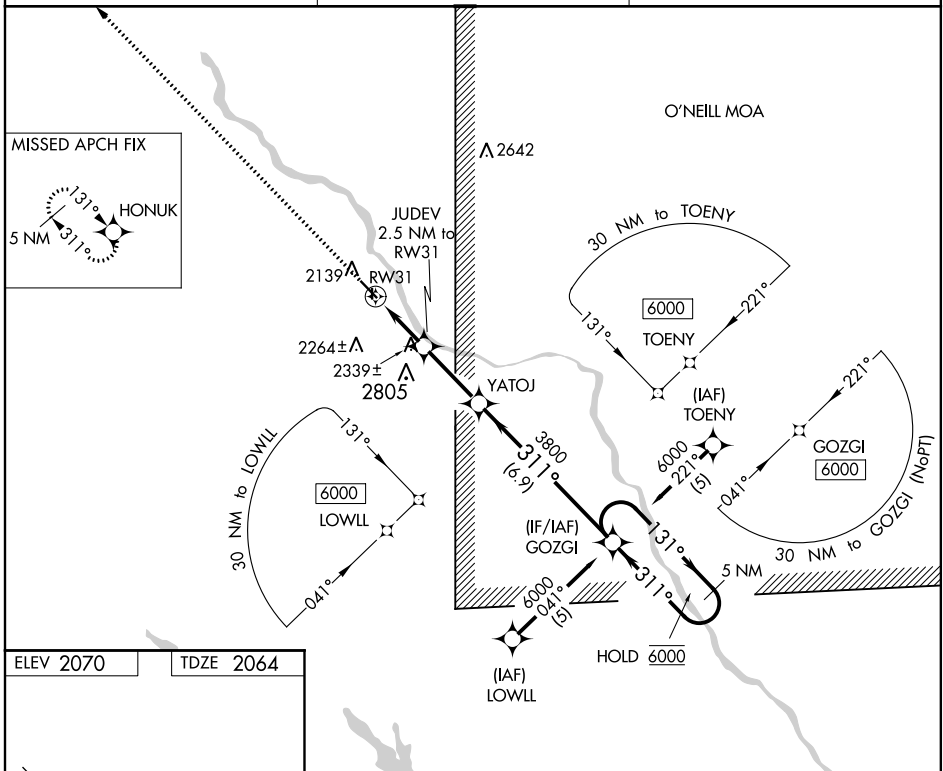
▽ Circling NA to Rwy 17 and 35. For uncompensated Baro-VNAV systems, LNAV/VNAV NA below -24°C or above 54°C.

MISSED APPROACH: Climb to 6000 direct HONUUK and hold, continue climb-in-hold to 6000.

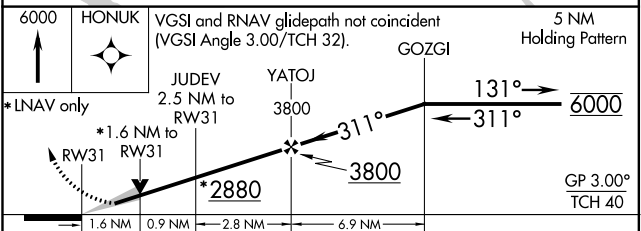
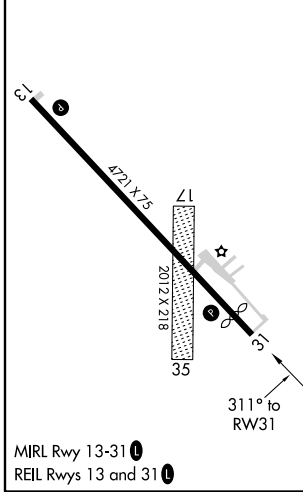
ASOS
119.925

MINNEAPOLIS CENTER
119.4 278.8

UNICOM
122.8 (CTAF) 0



ELEV 2070	TDZE 2064
-----------	-----------



CATEGORY	A	B	C	D
LPV DA	231 4-1	250 (300-1)		NA
LNAV/VNAV DA	2616-1 5/8	552 (600-1 5/8)		NA
LNAV MDA	2600-1	536 (600-1)		NA
C CIRCLING	2680-1	610 (700-1)		NA

NC-2, 03 DEC 2020 to 31 DEC 2020

NC-2, 03 DEC 2020 to 31 DEC 2020