

LOC/DME I-JFX 108.9 Chan 26	APP CRS 273°	Rwy Idg TDZE Apt Elev 4800 481 483
--	------------------------	--

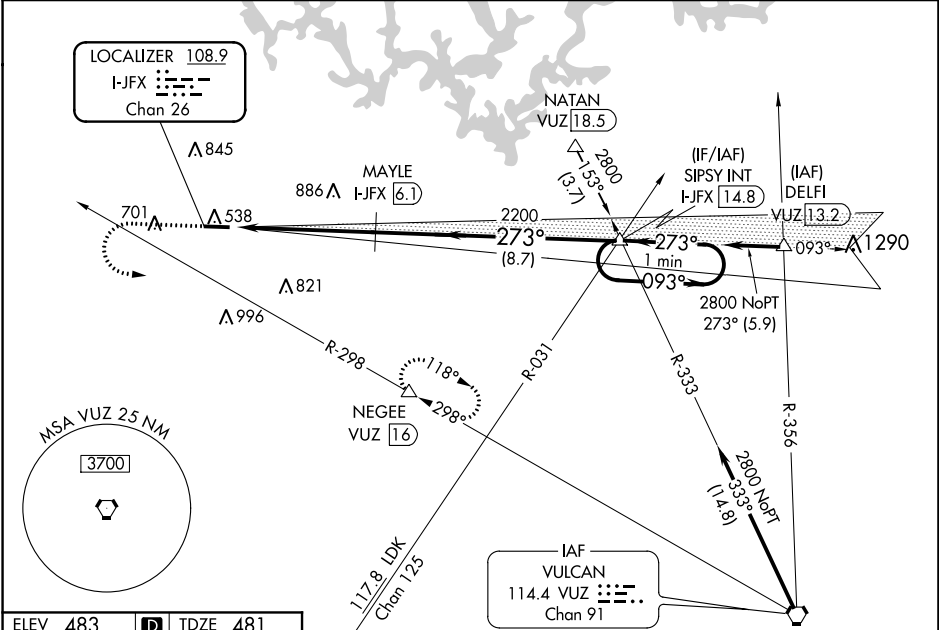
ILS or LOC/DME RWY 27

WALKER COUNTY-BEVILL FIELD (JFX)

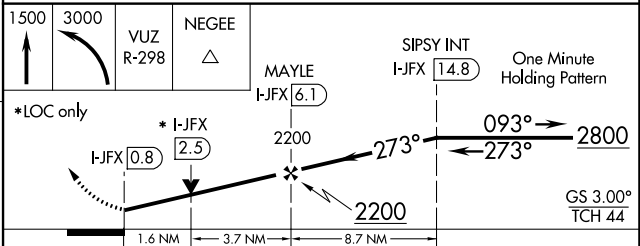
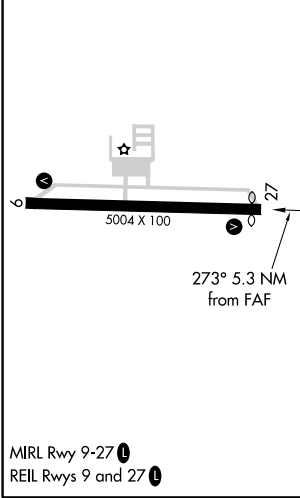
NA Helicopter visibility reduction below 3/4 SM NA. VDP NA with Birmingham altimeter setting. When local altimeter setting not received, use Birmingham altimeter setting and increase ILS DA 104 feet, and increase all MDA 120 feet; increase S-ILS all Cats, S-LOC Cat C/D and Circling Cat C visibility 3/8 mile and Circling Cat D visibility 1/4 mile. DME Required.

MISSED APPROACH: Climb to 1500 then climbing left turn to 3000 on VUZ VORTAC R-298 to NEGEE/16 DME and hold.

AWOS-3PT 119.225	BIRMINGHAM APP CON 127.675 338.2	UNICOM 122.7 (CTAF)
----------------------------	--	-------------------------------



ELEV 483	D	TDZE 481
----------	----------	----------



CATEGORY	A	B	C	D
S-ILS 27	788-1		307 (300-1)	
S-LOC 27	1040-1	559 (600-1)	1040-1 ⁵ / ₈	559 (600-1 ⁵ / ₈)
CIRCLING	1040-1	557 (600-1)	1040-1 ⁵ / ₈ 557 (600-1 ⁵ / ₈)	1080-2 597 (600-2)

SE-4, 03 DEC 2020 to 31 DEC 2020

SE-4, 03 DEC 2020 to 31 DEC 2020