

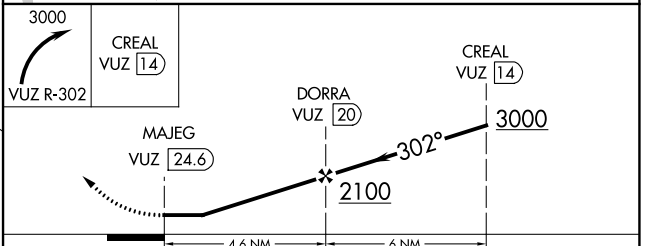
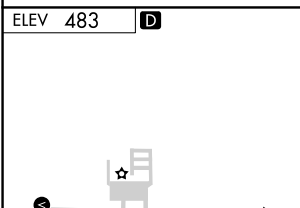
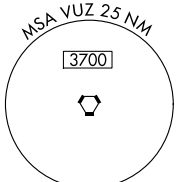
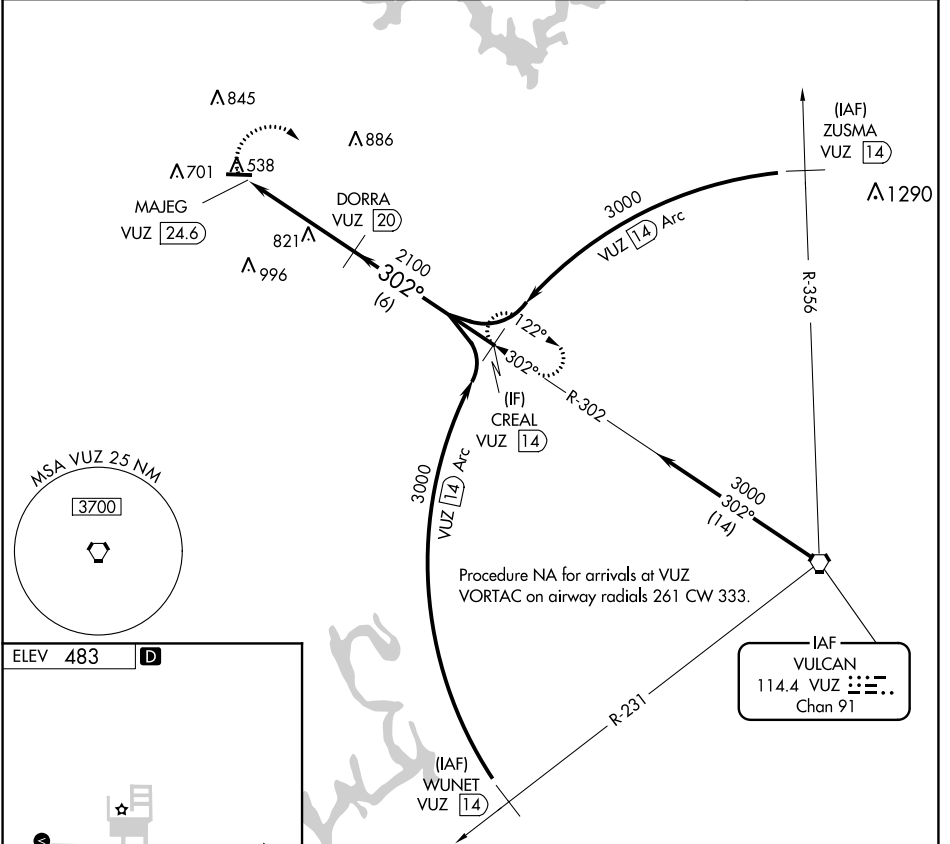
VORTAC VUZ <b>114.4</b> Chan <b>91</b>	APP CRS <b>302°</b>	Rwy Idg TDZE Apt Elev	<b>N/A</b> <b>N/A</b> <b>483</b>
--	------------------------	-----------------------------	--

**VOR/DME-A**  
WALKER COUNTY-BEVILL FIELD (JFXX)

**⚠** When local altimeter setting not received, use Birmingham altimeter setting and increase all MDA 120 feet and Cat C/D visibility ¼ mile.

**⚠** MISSED APPROACH: Climbing right turn to 3000 on VUZ VORTAC R-302 to CREAL/14 DME and hold.

AWOS-3PT <b>119.225</b>	BIRMINGHAM APP CON <b>127.675 338.2</b>	UNICOM <b>122.7 (CTAF) 0</b>
----------------------------	--	---------------------------------



CATEGORY	A	B	C	D
CIRCLING	1160-1 677 (700-1)	1160-1¼ 677 (700-1¼)	1160-2 677 (700-2)	1160-2¼ 677 (700-2¼)

SE-4, 03 DEC 2020 to 31 DEC 2020

SE-4, 03 DEC 2020 to 31 DEC 2020