

WAAS CH 58100 W36A	APP CRS 006°	Rwy Idg 7001 TDZE 87 Apt Elev 89
--	------------------------	---

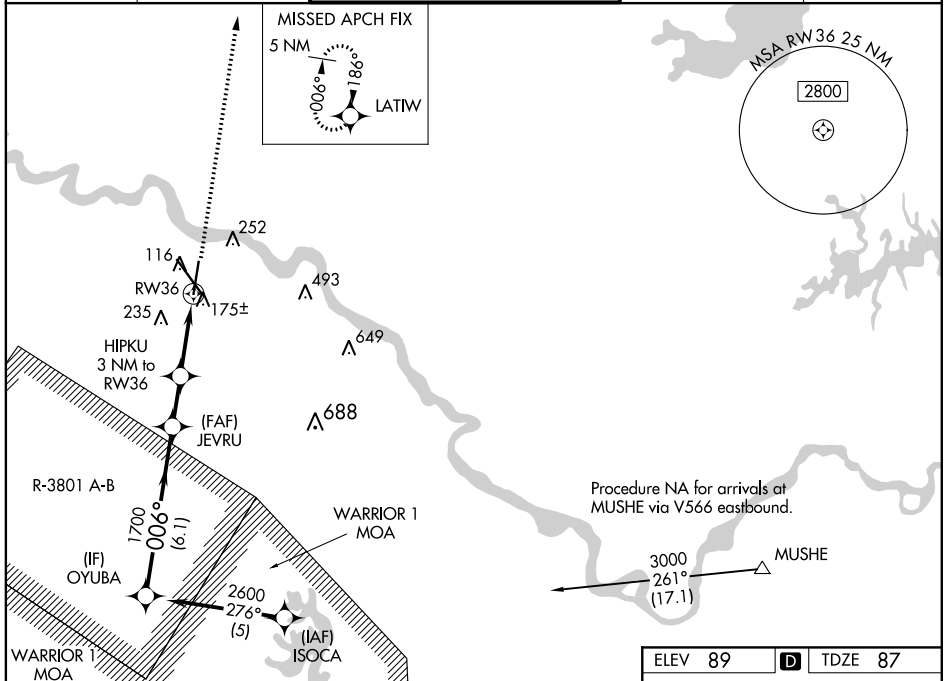
RNAV (GPS) RWY 36

ALEXANDRIA INTL (AEX)

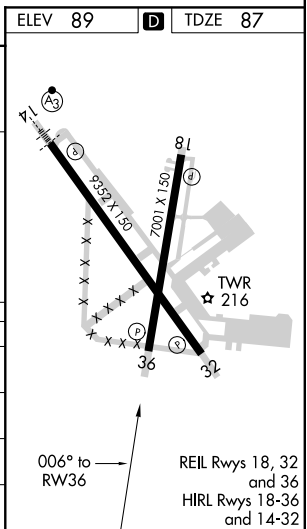
⚠ DME/DME RNP-0.3 NA. When R-3801 A-B in use, procedure NA. For uncompensated Baro-VNAV systems, LNAV/VNAV NA below -15°C (5°F) or above 48°C (119°F).
⚠ Rwy 36 helicopter visibility reduction below ¾ SM NA.

MISSED APPROACH: Climb to 2600 direct LATIW and hold.

ASOS 123.975	POLK APP CON 125.4 254.8	ALEXANDRIA TOWER 127.35 (CTAF) 269.2	GND CON 121.9 372.0	CLNC DEL 121.9
------------------------	------------------------------------	---	-------------------------------	--------------------------



OYUBA 2600 Procedure Turn NA GP 3.00° TCH 55	VGS1 and RNAV glidepath not coincident (VGS1 Angle 3.00/TCH 77).				2600 LATIW
	JEVRU HIPKU 3 NM to RW36 *1100 *1.1 NM to RW36				*LNAV only.
6.1 NM 1.8 NM 1.9 NM 1.1					
CATEGORY	A	B	C	D	
LPV DA	391-1		304 (400-1)		
LNAV/VNAV DA	425-1¼		338 (400-1¼)		
LNAV MDA	500-1 413 (500-1)		500-1¼ 413 (500-1¼)		
CIRCLING	540-1 451 (500-1)		560-1 471 (500-1)		700-1¾ 611 (700-1¾) 860-2½ 771 (800-2½)



SC-4, 25 MAR 2021 to 22 APR 2021

SC-4, 25 MAR 2021 to 22 APR 2021