

# HI-VOR or TACAN RWY 13

VORTAC PNH <b>116.6</b> Chan <b>113</b>	APCH CRS <b>115°</b>	Rwy ldg TDZE Arpt Elev <b>7901</b> <b>3603</b> <b>3607</b>
---	-------------------------	---

AL-19 [USAF]

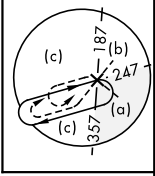
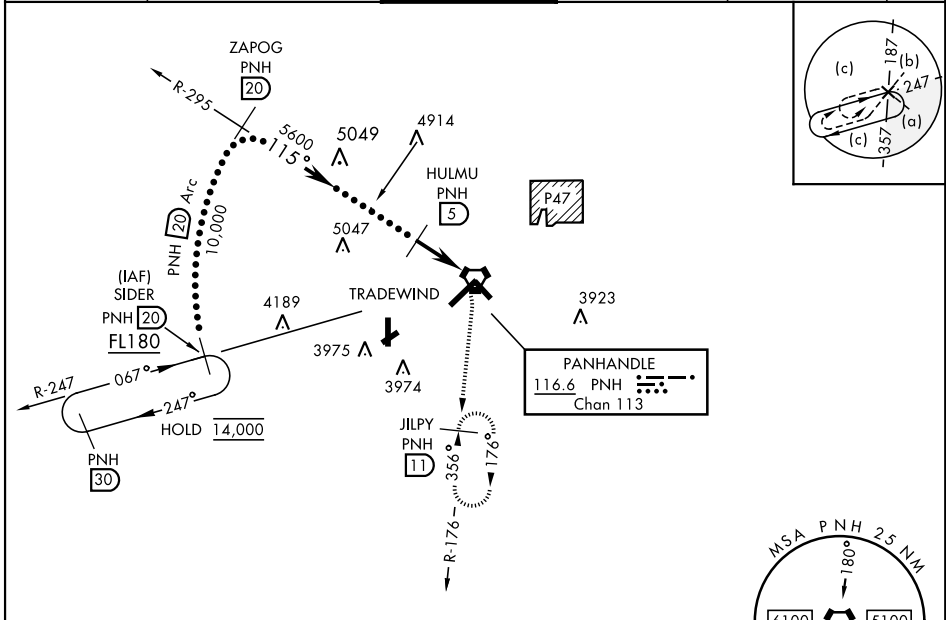
RICK HUSBAND AMARILLO INTL (KAMA)

DME required.

When local altimeter setting not received, use Borger altimeter setting.

MISSED APPROACH: Climbing right turn to 5300 on PNH VORTAC R-176 to JILPY/11 DME and hold.

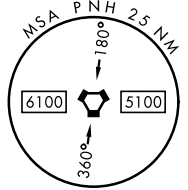
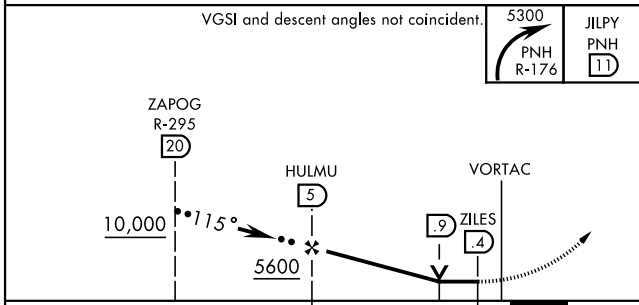
ATIS <b>118.85 350.3</b>	AMARILLO APP CON <b>119.5 307.0</b>	AMARILLO TOWER ★ <b>118.3 0 257.9</b>	GND CON <b>121.9 348.6</b>	CLNC DEL <b>121.65 239.275</b>	ASR
-----------------------------	--	--	-------------------------------	-----------------------------------	-----



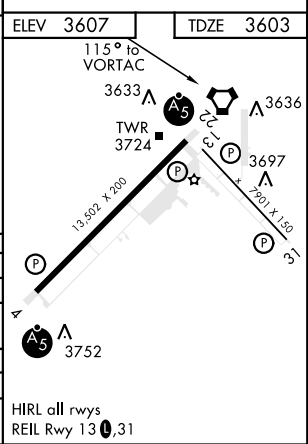
SC-2, 25 MAR 2021 to 22 APR 2021

SC-2, 25 MAR 2021 to 22 APR 2021

EMERG SAFE ALT 100 NM 7500



CATEGORY	C	D	E
S-13	4040-1¼	437	(500-1¼)
CIRCLING	4240-1¼	4280-2¼	4460-3
	633 (700-1¾)	673 (700-2¼)	853 (900-3)
WITH BORGER ALTIMETER SETTING			
S-13	4200-1¾	597	(600-1¾)
CIRCLING	4400-2¼	4440-2¾	4620-3
	793 (900-2¼)	833 (900-2¾)	1013 (1100-3)



# HI-VOR or TACAN RWY 13