

HI-VOR or TACAN RWY 22

VORTAC PNH 116.6 Chan 113	APCH CRS 235°	Rwy Idg 13,502 TDZE 3606 Arprt Elev 3607
---	-------------------------	---

JAL-19 [USAF]

RICK HUSBAND AMARILLO INTL (KAMA)

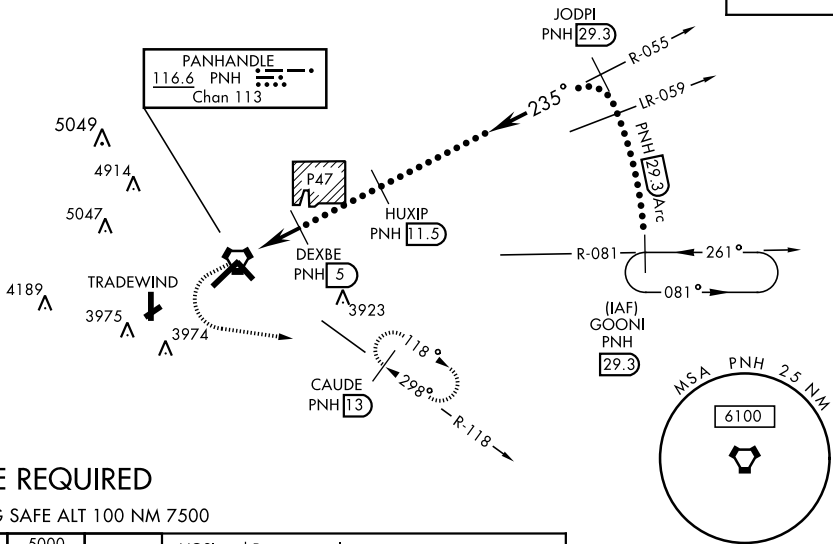
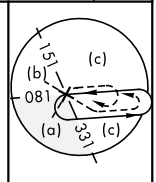
▼ * When ALS inop, increase CAT CDE vis to 1½ mile.
** When ALS inop, increase CAT CDE vis to 1¼ mile.
ALT MINS N/A when local altimeter not available.



MISSED APPROACH: Climb to 4100 then climbing left turn to 5000 on heading 090° and PNH VOTRAC R-118 to CAUDE INT/PNH 13 DME and hold.

ATIS 118.85 350.3	AMARILLO APP CON 119.5 307.0	AMARILLO TOWER* 118.3 0 257.9	GND CON 121.9 348.6	CLNC DEL 121.65 239.275	ASR
-----------------------------	--	---	-------------------------------	-----------------------------------	-----

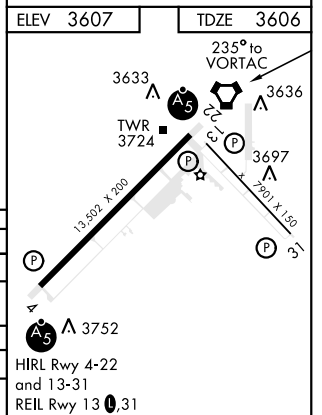
When local altimeter setting not received, use Borger altimeter setting.



DME REQUIRED

EMERG SAFE ALT 100 NM 7500

4100	5000	PNH R-118	VGSI and Descent angles not coincident	JODPI R-055	GOONI R-081
↑	hdg 090°			29.3	29.3
VORTAC		UYOMU (5)	DEXBE (5)	HUXIP (11.5)	JODPI (29.3)
0.7 NM		4.5 NM		6000	14,000
235°		235°		17,000	
Arc (29)		Arc (29)			
CATEGORY	C	D	E		
S-22 *	4000-5/8 394 (400-3/8)				
CIRCLING	4240-13/4 633 (700-13/4)	4280-21/4 673 (700-21/4)	4460-3 853 (900-3)		
BORGER ALTIMETER SETTING					
S-22 **	4160-11/8 554 (600-11/8)				
CIRCLING	4400-21/4 793 (800-21/4)	4420-23/4 813 (900-23/4)	4620-3 1013 (1100-3)		



HI-VOR or TACAN RWY 22

SC-2, 25 MAR 2021 to 22 APR 2021

SC-2, 25 MAR 2021 to 22 APR 2021