

HI-VOR or TACAN RWY 31

VORTAC PNH 116.6 Chan 113	APCH CRS 313°	Rwy Idg TDZE Arprt Elev 7901 3601 3607
---	-------------------------	--

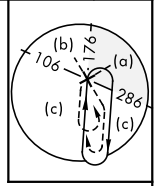
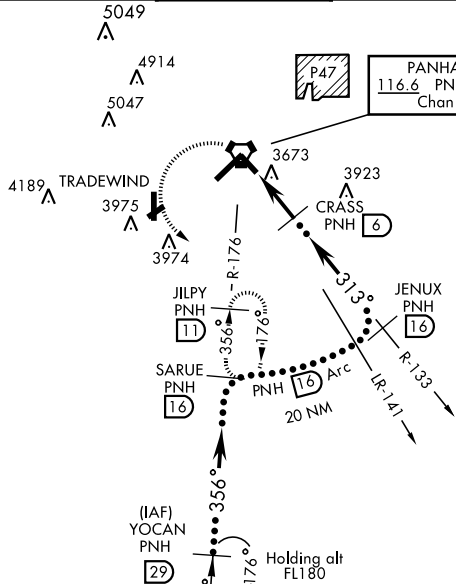
JAL-19 [USAF]

RICK HUSBAND AMARILLO INTL (KAMA)

When local altimeter setting not received, use Borger altimeter setting.

MISSED APPROACH: Climbing left turn to 5300 on PNH VORTAC R-176 to JILPY/PNH 11 DME and hold.

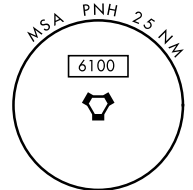
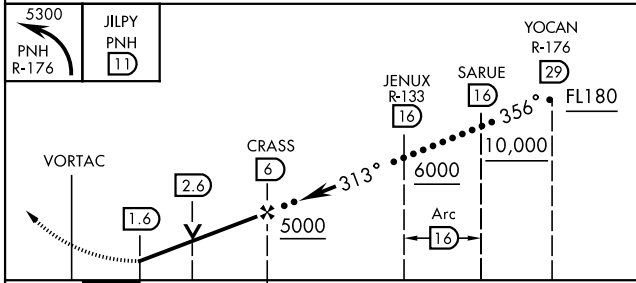
ATIS 118.85 350.3	AMARILLO APP CON 119.5 307.0	AMARILLO TOWER★ 118.3 0 257.9	GND CON 121.9 348.6	CLNC DEL 121.65 239.275	ASR
-----------------------------	--	---	-------------------------------	-----------------------------------	-----



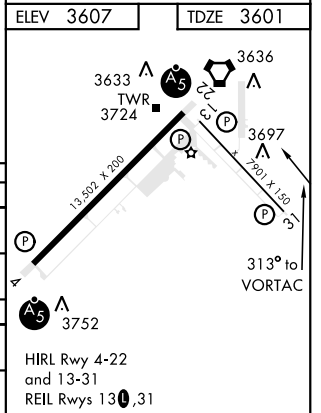
PANHANDLE
116.6 PNH
Chan 113

DME REQUIRED

EMERG SAFE ALT 100 NM 7500



CATEGORY	C	D	E
S-31	3960-1 359 (400-1)	3960-1¼ 359 (400-1¼)	
CIRCLING	4240-1¾ 633 (500-1¾)	4280-2¼ 673 (700-2¼)	4460-3 853 (900-3)
BORGER ALTIMETER SETTING			
S-31	4120-1¾ 793 (800-2¼)	519 833 (900-2¾)	(600-1¾) 1013 (1100-3)
CIRCLING	4400-2¼ 793 (800-2¼)	4440-2¾ 833 (900-2¾)	4620-3 1013 (1100-3)



HI-VOR or TACAN RWY 31

SC-2, 25 MAR 2021 to 22 APR 2021

SC-2, 25 MAR 2021 to 22 APR 2021