

VORTAC PNH 116.6 Chan 113	APCH CRS 037°	Rwy Idg 13,502 TDZE 3607 Arprt Elev 3607
---	-------------------------	---

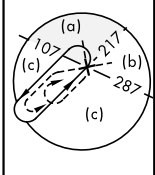
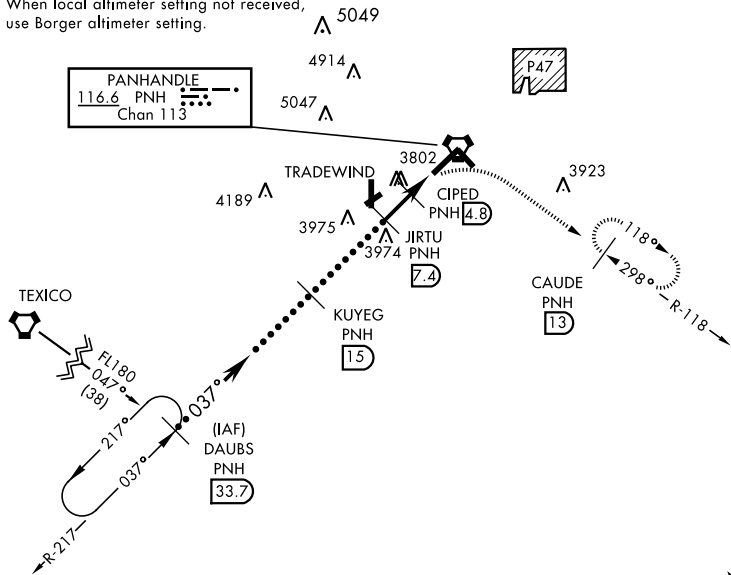
JAL-19 [USAF]

RICK HUSBAND AMARILLO INTL (KAMA)

<p>▼ * When ALS inop, increase CAT D vis to 1¼ miles, CAT E vis to 1½ miles.</p> <p>** When ALS inop, increase CAT CD vis to 1½ miles, CAT E vis to 1¾ miles.</p>		<p>MISSED APPROACH: Climbing right turn to 5000 on heading 090° and PNH VORTAC R-118 to CAUDE/PNH 13 DME and hold.</p>
---	--	--

ATIS 118.85 350.3	AMARILLO APP CON 119.5 307.0	AMARILLO TOWER* 118.3 0 257.9	GND CON 121.9 348.6	CLNC DEL 121.65 239.275	ASR
-----------------------------	--	---	-------------------------------	-----------------------------------	-----

When local altimeter setting not received, use Borger altimeter setting.

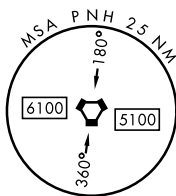
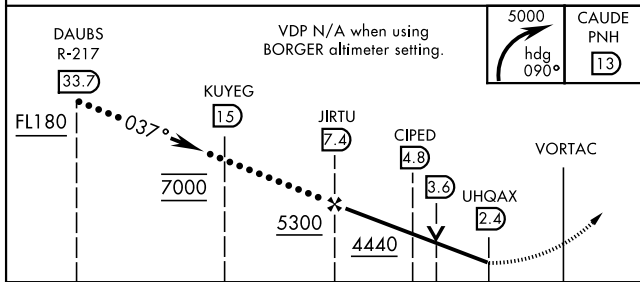


SC-2, 25 MAR 2021 to 22 APR 2021

SC-2, 25 MAR 2021 to 22 APR 2021

DME REQUIRED

EMERG SAFE ALT 100 NM 7500



CATEGORY	C	D	E
S-4 *	4040/40 433 (500-¾)	4040/50 433 (500-1)	
CIRCLING	4240-1¾ 633 (700-1¾)	4280-2¼ 673 (700-2¼)	4460-3 853 (900-3)
BORGER ALTIMETER SETTING			
S-4 **	4200-1¼	593	(600-1¼)
CIRCLING	4400-2¼ 793 (900-2¼)	4440-2¾ 833 (900-2¾)	4620-3 1013 (1100-3)

