

LOC I-RIQ 111.1 Chan 48	APP CRS 214°	Rwy Idg 13502 TDZE 3606 Apt Elev 3607
---	------------------------	--

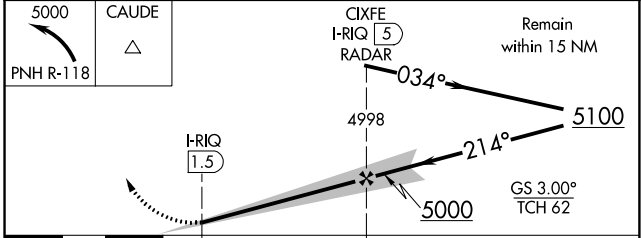
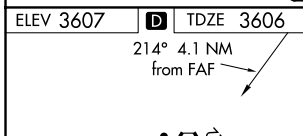
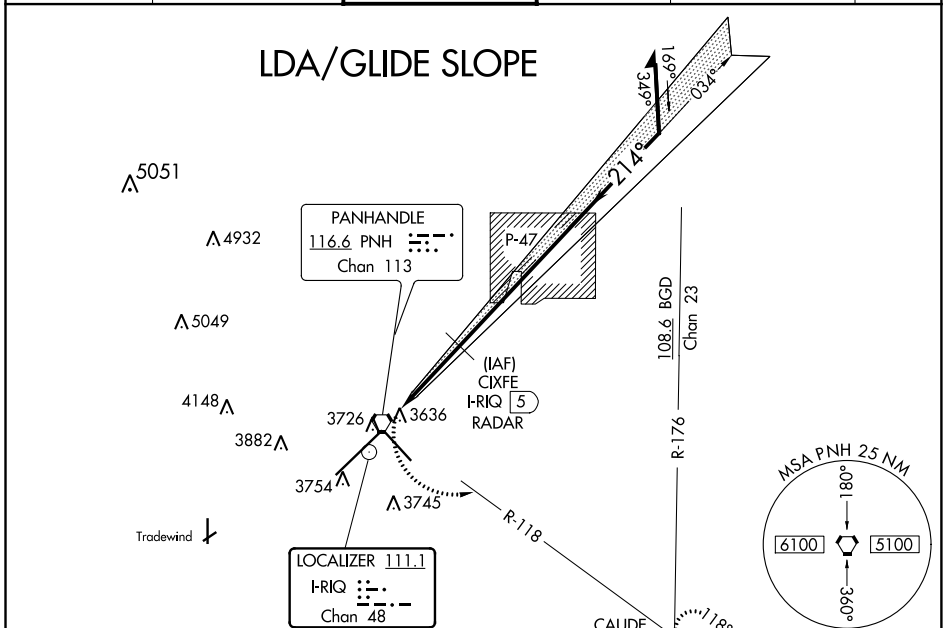
LDA/DME RWY 22
RICK HUSBAND AMARILLO INTL (AMA)

RADAR required for procedure entry.

Final approach course offset 4.45 degrees intersects the runway centerline 2509' from Rwy 22. For inop ALS, increase LDA/GS-22 all Cats visibility to ¾ SM, ASR increase LDA-22 Cat C/D/E visibility to ½ SM.

MALS R **AS** MISSED APPROACH: Climbing left turn to 5000 via PNH VORTAC R-118 to CAUDE INT and hold.

ATIS 118.85 350.3	AMARILLO APP CON* 119.5 307.0	AMARILLO TOWER* 118.3(CTAF) 257.9	GND CON 121.9 348.6	CLNC DEL 121.65 239.275	UNICOM 122.95
-----------------------------	---	---	-------------------------------	-----------------------------------	-------------------------



CATEGORY	A	B	C	D	E
LDA/GS-22		3856-½	250 (300-½)		
LDA-22		3900-½	294 (300-½)	3900-¾	294 (300-¾)
C CIRCLING	4080-1	473 (500-1)	4240-1¾ 633 (700-1¾)	4280-2¼ 673 (700-2¼)	4460-3 853 (900-3)

SC-2, 25 MAR 2021 to 22 APR 2021

SC-2, 25 MAR 2021 to 22 APR 2021