

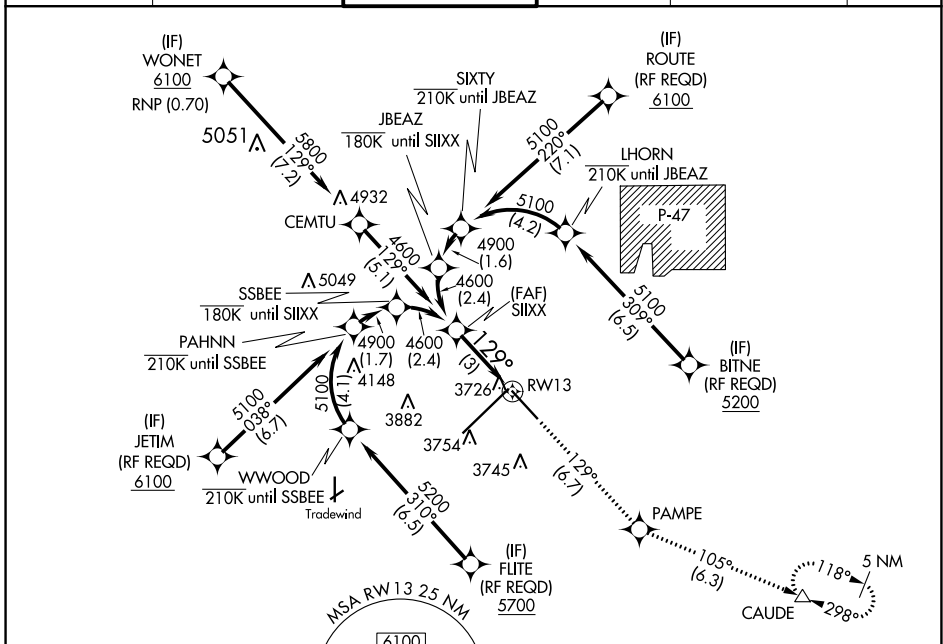
APP CRS	Rwy Idg	7901
129°	TDZE	3603
	Apt Elev	3607

RNAV (RNP) Z RWY 13

RICK HUSBAND AMARILLO INTL (AMA)

<p>ASR For uncompensated Baro-VNAV systems, procedure NA below -14°C (7°F) or above 51°C (124°F). GPS required.</p>	<p>MISSED APPROACH: Climb to 5400 on track 129° to PAMPE and track 105° to CAUDE and hold.</p>
--	---

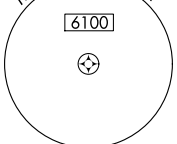
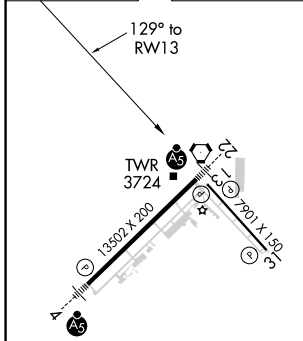
ATIS 118.85 350.3	AMARILLO APP CON* 119.5 307.0	AMARILLO TOWER* 118.3(CTAF) 257.9	GND CON 121.9 348.6	CLNC DEL 121.65 239.275	UNICOM 122.95
-----------------------------	---	---	-------------------------------	-----------------------------------	-------------------------



SC-2, 25 MAR 2021 to 22 APR 2021

SC-2, 25 MAR 2021 to 22 APR 2021

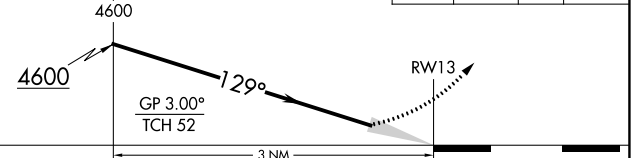
ELEV	3607	D	TDZE	3603
------	-------------	----------	------	-------------



RNAV 1 - GPS or RADAR REQUIRED

See planview for multiple IF locations.

5400	PAMPE	CAUDE
↑	✧	△
tr 129°	tr 105°	



CATEGORY	A	B	C	D
RNP 0.30 DA		3976-1¼	373 (400-1¼)	

AUTHORIZATION REQUIRED