
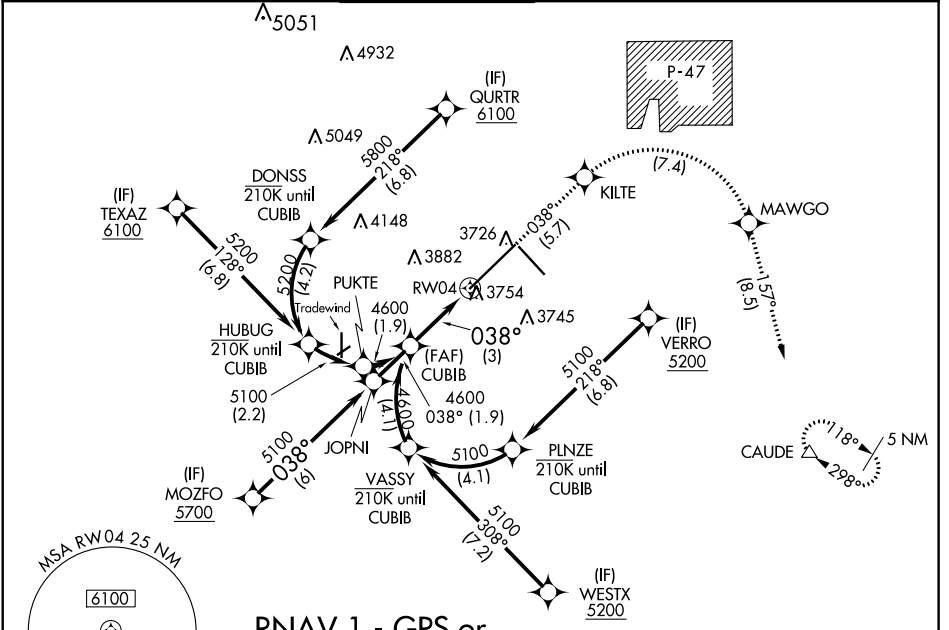


APP CRS <b>038°</b>	Rwy Idg TDZE Apt Elev	<b>13502</b> <b>3607</b> <b>3607</b>
------------------------	-----------------------------	--

**RNAV (RNP) Z RWY 4**  
RICK HUSBAND AMARILLO INTL (AMA)

<p><b>ASR</b> For uncompensated Baro-VNAV systems, procedure NA below -14°C (7°F) or above 53°C (128°F). RF required. GPS required. For inop ALS, increase RNP 0.30 all Cats visibility to 1½ SM.</p>	<p><b>MALSR</b> AS</p> 	<p><b>MISSED APPROACH:</b> (Do not exceed 185K until MAWGO) Climb to 5400 on track 038° to KILTE, right turn to MAWGO, then track 157° to CAUDE and hold.</p>
---	--	---

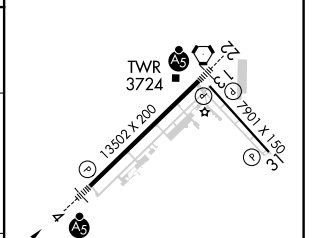
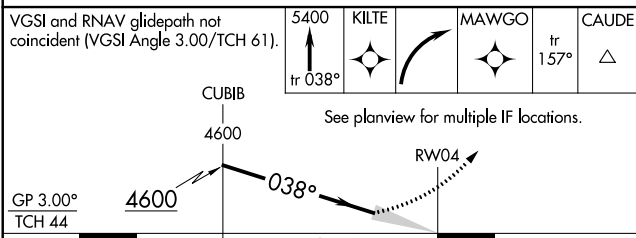
ATIS <b>118.85 350.3</b>	AMARILLO APP CON* <b>119.5 307.0</b>	AMARILLO TOWER* <b>118.3(CTAF) 257.9</b>	GND CON <b>121.9 348.6</b>	CLNC DEL <b>121.65 239.275</b>	UNICOM <b>122.95</b>
-----------------------------	---	---	-------------------------------	-----------------------------------	-------------------------



SC-2, 25 MAR 2021 to 22 APR 2021

SC-2, 25 MAR 2021 to 22 APR 2021

ELEV 3607	<b>D</b> TDZE 3607
-----------	--------------------



CATEGORY	A	B	C	D
RNP 0.12 DA		3969/40	362 (400-¾)	
RNP 0.30 DA		4019/50	412 (500-1)	

**AUTHORIZATION REQUIRED**

REIL Rwy 13 and 31  
HIRL Rwy 4-22 and 13-31