

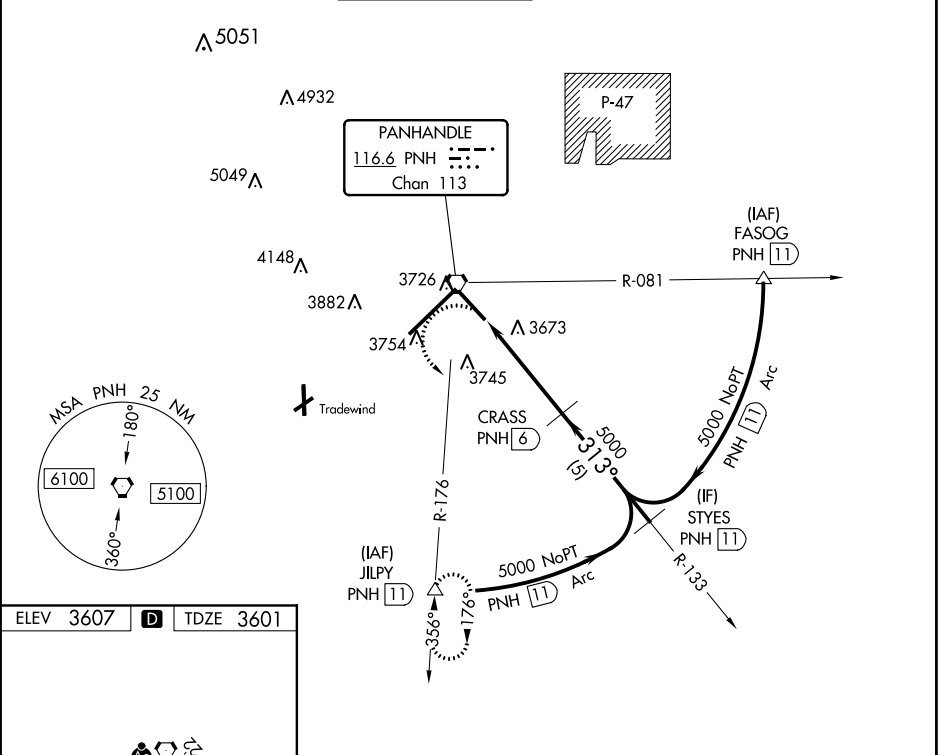
VORTAC PNH <b>116.6</b> Chan <b>113</b>	APP CRS <b>313°</b>	Rwy Idg TDZE Apt Elev <b>7901</b> <b>3601</b> <b>3607</b>
---	------------------------	--

# VOR RWY 31

RICK HUSBAND AMARILLO INTL (A.M.A)

DME required.		MISSED APPROACH: Climbing left turn to 5300 on PNH VORTAC R-176 to JILPY/11 DME and hold.			
ATIS <b>118.85 350.3</b>	AMARILLO APP CON* <b>119.5 307.0</b>	AMARILLO TOWER* <b>118.3(CTAF) 257.9</b>	GND CON <b>121.9 348.6</b>	CLNC DEL <b>121.65 239.275</b>	UNICOM <b>122.95</b>

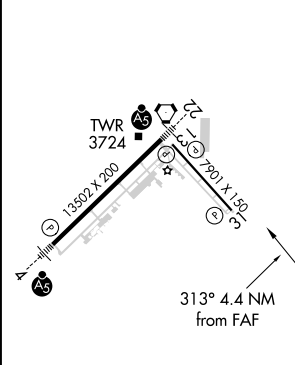
ATIS <b>118.85 350.3</b>	AMARILLO APP CON* <b>119.5 307.0</b>	AMARILLO TOWER* <b>118.3(CTAF) 257.9</b>	GND CON <b>121.9 348.6</b>	CLNC DEL <b>121.65 239.275</b>	UNICOM <b>122.95</b>
-----------------------------	---	---	-------------------------------	-----------------------------------	-------------------------



SC-2, 25 MAR 2021 to 22 APR 2021

SC-2, 25 MAR 2021 to 22 APR 2021

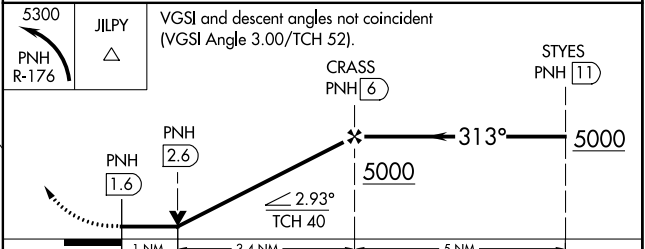
ELEV <b>3607</b>	<b>D</b>	TDZE <b>3601</b>
------------------	----------	------------------



REIL Rwy 13 and 31  
HIRL Rwys 4-22 and 13-31

FAF to MAP 4.4 NM

Knots	60	90	120	150	180
Min:Sec	4:24	2:56	2:12	1:46	1:28



CATEGORY	A	B	C	D	E
S-31	3960-1	359 (400-1)		3960-1¼	359 (400-1¼)
<b>C</b> CIRCLING	4080-1	473 (500-1)	4240-1¾ 633 (700-1¾)	4280-2¼ 673 (700-2¼)	4460-3 853 (900-3)