

(BEAVY5.BEAVY) 19059

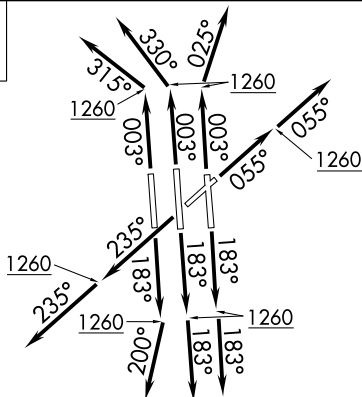
AL-78 (FAA)

CHARLOTTE/DOUGLAS INTL (CLT)
CHARLOTTE, NORTH CAROLINA

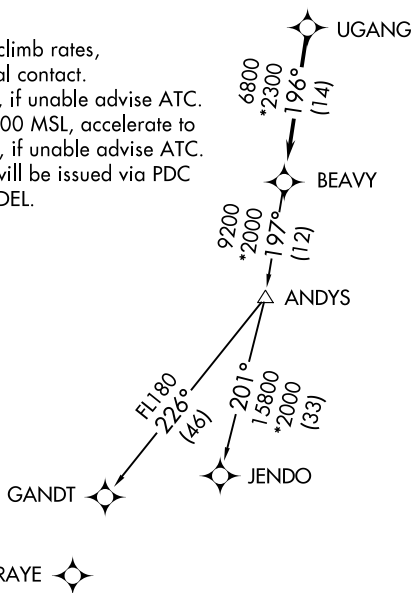
BEAVY FIVE DEPARTURE (RNAV)

D-ATIS DEP 132.1
 CLNC DEL
 127.15 348.6
 CPDLC
 GND CON
 121.8 348.6 (WEST)
 121.9 348.6 (EAST)
 CHARLOTTE TOWER
 118.1 257.8 (Rwys 18L-36R, 5-23)
 126.4 257.8 (Rwy 18C-36C)
 133.35 257.8 (Rwy 18R-36L)
 CHARLOTTE DEP CON
 120.5 257.2 (Rwys 36C, 36L)
 124.0 307.8 (Rwys 5, 18C, 18L, 18R, 23, 36R)

**TOP ALTITUDE:
8000**



- NOTE: For turbojets only.
- NOTE: DME/DME/IRU or GPS required.
- NOTE: RNAV 1.
- NOTE: RADAR required.
- NOTE: If unable to accept climb rates, advise ATC on initial contact.
- NOTE: Accelerate to 250K, if unable advise ATC. Upon reaching 10000 MSL, accelerate to and maintain 280K, if unable advise ATC.
- NOTE: Transponder code will be issued via PDC or Charlotte CLNC DEL.



TAKEOFF MINIMUMS

- Rwys 18C/L/R, 23, 36C/R: Standard with minimum climb of 500' per NM to 1260.
- Rwy 5: Standard with minimum climb of 500' per NM to 1300.
- Rwy 36L: Standard with minimum climb of 500' per NM to 1400.

NOTE: Chart not to scale.

(NARRATIVE ON FOLLOWING PAGE)

BEAVY FIVE DEPARTURE (RNAV)

(BEAVY5.BEAVY) 03JAN19

CHARLOTTE, NORTH CAROLINA
CHARLOTTE/DOUGLAS INTL (CLT)

SE-2, 25 MAR 2021 to 22 APR 2021

SE-2, 25 MAR 2021 to 22 APR 2021