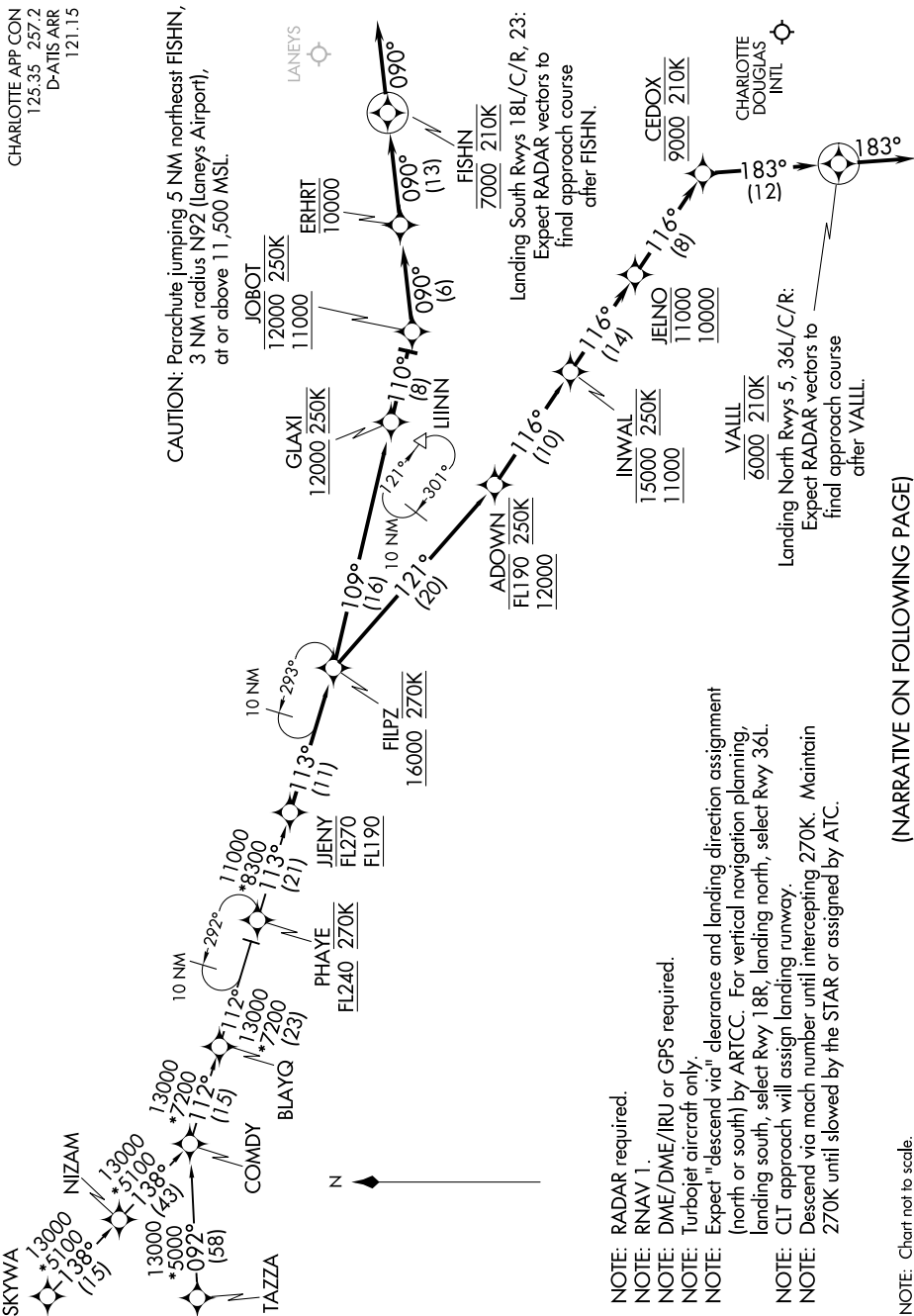


FILPZ THREE ARRIVAL (RNAV)

CHARLOTTE APP CON
125.35 257.2
D-ATIS ARR
121.15

CAUTION: Parachute jumping 5 NM northeast FISHN,
3 NM radius N92 (Lanays Airport),
at or above 11,500 MSL.



SE-2, 25 MAR 2021 to 22 APR 2021

- NOTE: RADAR required.
- NOTE: RNAV 1.
- NOTE: DME/DME/IRU or GPS required.
- NOTE: Turbojet aircraft only.
- NOTE: Expect "descend via" clearance and landing direction assignment (north or south) by ARTCC. For vertical navigation planning, landing south, select Rwy 18R, landing north, select Rwy 36L.
- NOTE: CLT approach will assign landing runway.
- NOTE: Descend via mach number until intercepting 270K. Maintain 270K until slowed by the STAR or assigned by ATC.

(NARRATIVE ON FOLLOWING PAGE)

NOTE: Chart not to scale.

FILPZ THREE ARRIVAL (RNAV)

(JJENY.FILPZ3) 17AUG17

SE-2, 25 MAR 2021 to 22 APR 2021