

LOC I-DQG	APP CRS	Rwy Idg	10000
111.7	003°	TDZE	707
		Apt Elev	748

ILS RWY 36C (CAT II & III)

CHARLOTTE/DOUGLAS INTL (CLT)

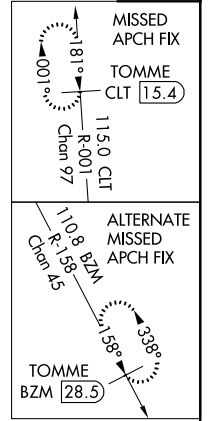
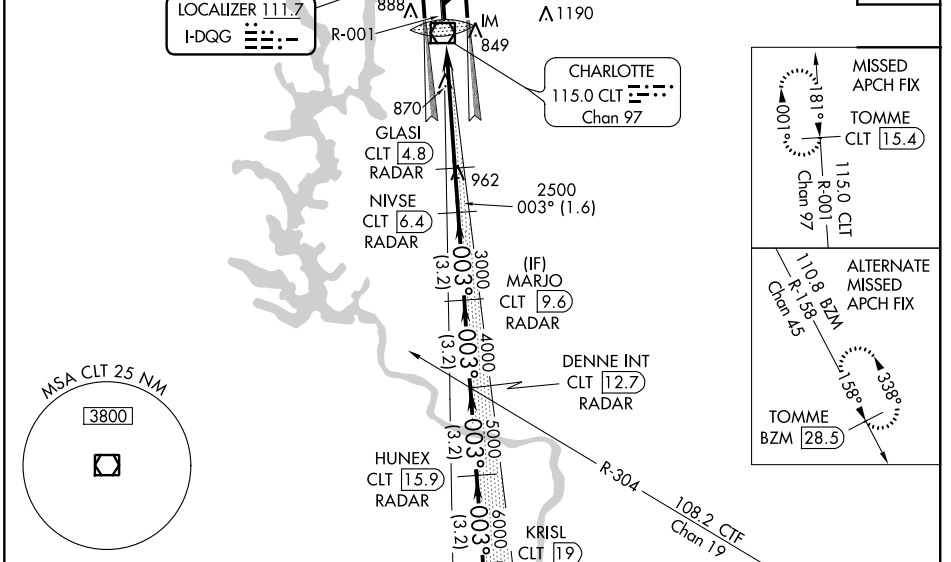
RADAR required for procedure entry. DME or RADAR required.

ALSF-2

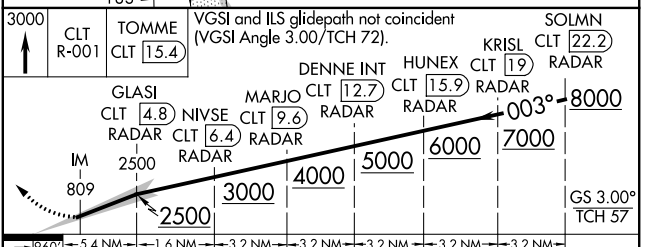
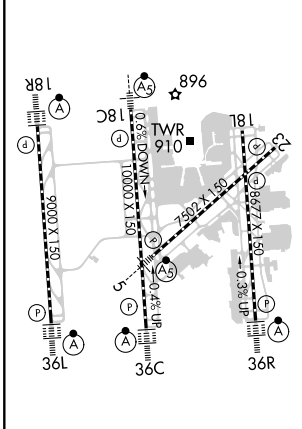
MISSED APPROACH: Climb to 3000 on CLT VOR/DME R-001 to TOMME/CLT 15.4 DME and hold.

Simultaneous approach authorized.
DQG ILS LLZ Rwy 36C unusable for rollout guidance.

D-ATIS	CHARLOTTE APP CON	CHARLOTTE TOWER	GND CON	CLNC DEL
ARR 121.15	(001°-119°) 128.32	(Rwys 18L-36R, 5-23) 118.1 257.8	121.8 348.6 (WEST)	127.15
DEP 132.1	(120°-295°) 120.05	(Rwy 18C-36C) 126.4 257.8	121.9 348.6 (EAST)	348.6
	(296°-360°) 134.75	(Rwy 18R-36L) 133.35 257.8		
	(180°-359°) 257.2			
	(360°-179°) 307.8			



ELEV 748	D	TDZE 707
----------	---	----------



9.60'	5.4 NM	1.6 NM	3.2 NM	3.2 NM	3.2 NM	3.2 NM	3.2 NM
A	B	C	D				
S-ILS 36C	CAT II RA 126/12 100 DA 807						
S-ILS 36C	CAT IIIa RVR 07						
S-ILS 36C	CAT IIIb RVR 07						
S-ILS 36C	CAT IIIc NA						

CATEGORY II & III ILS - SPECIAL AIRCREW & AIRCRAFT CERTIFICATION REQUIRED

SE-2, 25 MAR 2021 to 22 APR 2021

SE-2, 25 MAR 2021 to 22 APR 2021