

KNIGHTS TWO DEPARTURE

D-ATIS DEP 132.1
 CLNIC DEL
 127.15 348.6
 CPDLC
 GND CON
 121.8 348.6 (WEST)
 121.9 348.6 (EAST)
 CHARLOTTE TOWER
 118.1 257.8 (Rwys 18L-36R, 5-23)
 126.4 257.8 (Rwy 18C-36C)
 133.35 257.8 (Rwy 18R-36L)

NORTHWEST CHARLOTTE DEP CON

120.05 257.2 (DEBIE, NEANO TRANSITIONS)
 120.05 257.2 (FLYNN, CEGAL TRANSITIONS RwyS 18C/L/R, 23)
 120.5 257.2 (FLYNN, CEGAL TRANSITIONS RwyS 5, 36L/C/R)

**TOP ALTITUDE:
4000**

TAKEOFF MINIMUMS

Rwys 5, 18C/L/R, 23, 36C/L/R: Standard.

- NOTE: For propeller aircraft only.
- NOTE: RADAR and DME required.
- NOTE: Turboprops: Operate in a manner that will result in best forward speed and climb rate.
- NOTE: Transponder code will be issued via PDC or Charlotte clearance delivery.

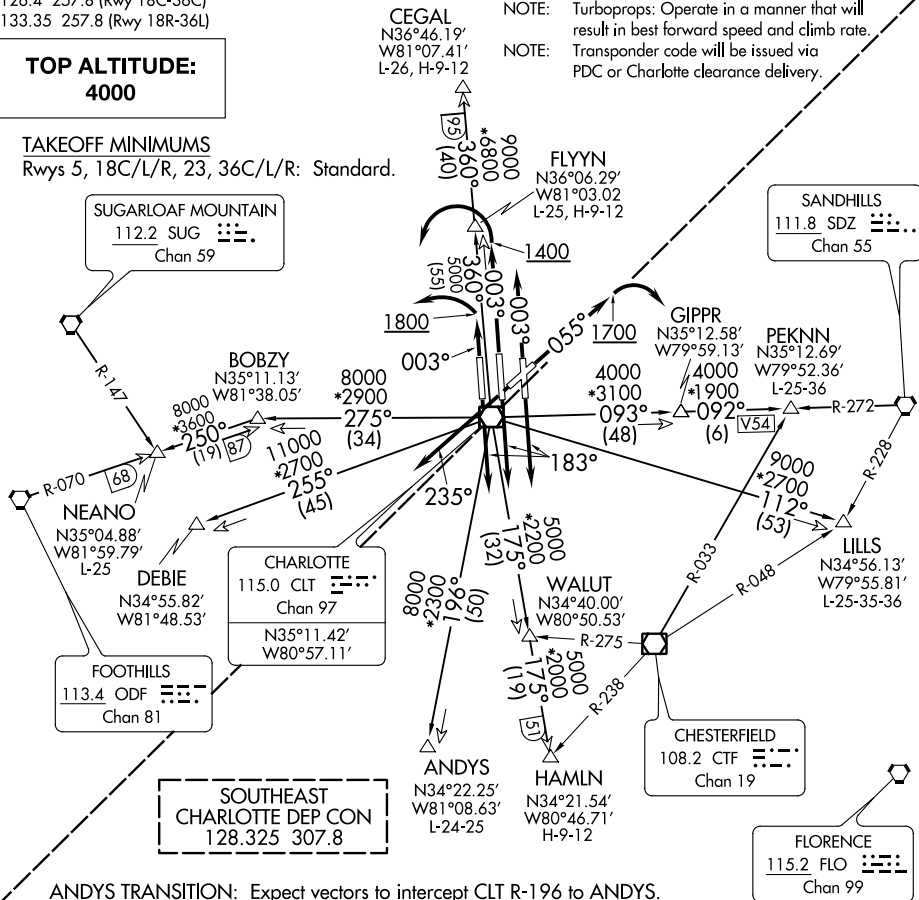
SUGARLOAF MOUNTAIN
 112.2 SUG
 Chan 59

SANDHILLS
 111.8 SDZ
 Chan 55

CHARLOTTE
 115.0 CLT
 Chan 97
 N35°11.42'
 W80°57.11'

FOOTHILLS
 113.4 ODF
 Chan 81

SOUTHEAST CHARLOTTE DEP CON
 128.325 307.8



- ANDYS TRANSITION: Expect vectors to intercept CLT R-196 to ANDYS.
- CEGAL TRANSITION: Expect vectors to intercept CLT R-360 to CEGAL.
- DEBIE TRANSITION: Expect vectors to intercept CLT R-255 to DEBIE.
- FLYNN TRANSITION: Expect vectors to intercept CLT R-360 to FLYNN.
- HAMLN TRANSITION: Expect vectors to intercept CLT R-175 to HAMLN.
- LILLS TRANSITION: Expect vectors to intercept CLT R-112 to LILLS.
- NEANO TRANSITION: Expect vectors to intercept CLT R-275 to BOBZY then ODF R-070 to NEANO.
- PEKNN TRANSITION: Expect vectors to intercept CLT R-093 to GIPPR then SDZ R-272 to PEKNN.

NOTE: Chart not to scale.

(NARRATIVE ON FOLLOWING PAGE)

KNIGHTS TWO DEPARTURE

SE-2, 25 MAR 2021 to 22 APR 2021

SE-2, 25 MAR 2021 to 22 APR 2021