

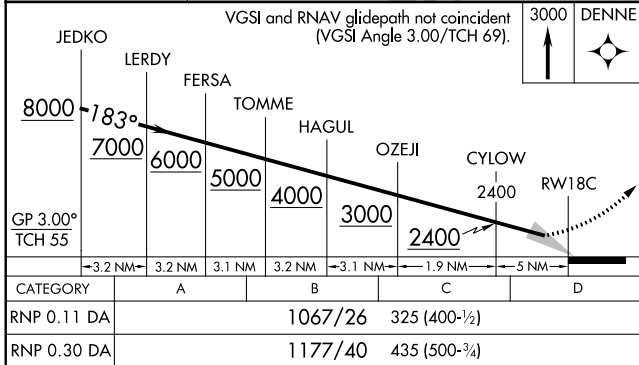
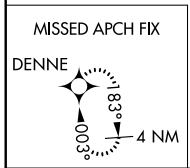
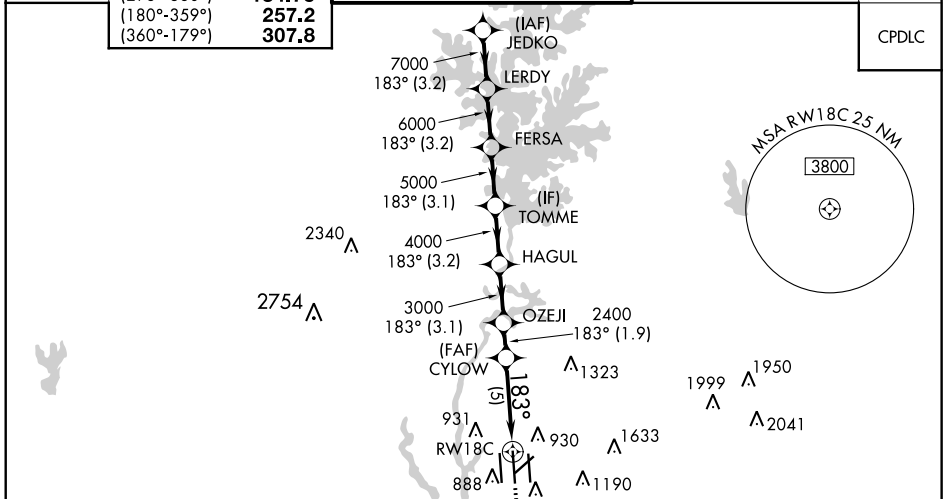
| | |
|-------------|----------------------|
| APP CRS | Rwy Idg 10000 |
| 183° | TDZE 742 |
| | Apt Elev 748 |

RNAV (RNP) Z RWY 18C

CHARLOTTE/DOUGLAS INTL (CLT)

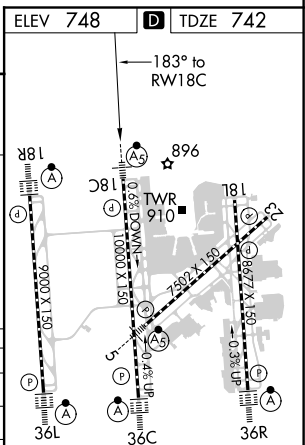
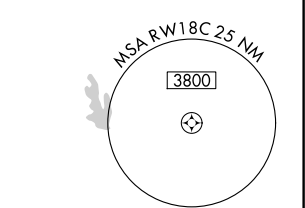
| | | | | |
|--|--|--------|---|--|
| RNP AR APCH. | | MALSRL | MISSED APPROACH: Climb to 3000 direct DENNE and hold. | |
| Simultaneous approach authorized. For uncompensated Baro-VNAV systems, procedure NA below -11°C or above 54°C. | | | | |

| | | | | |
|-------------------|----------------------------|---|---------------------------|---------------|
| D-ATIS | CHARLOTTE APP CON | CHARLOTTE TOWER | GND CON | CLNC DEL |
| ARR 121.15 | (001°-119°) 128.325 | (Rwys 18L-36R, 5-23) 118.1 257.8 | 121.8 348.6 (WEST) | 127.15 |
| DEP 132.1 | (120°-295°) 120.05 | (Rwy 18C-36C) 126.4 257.8 | 121.9 348.6 (EAST) | 348.6 |
| | (296°-360°) 134.75 | (Rwy 18R-36L) 133.35 257.8 | | |
| | (180°-359°) 257.2 | | | |
| | (360°-179°) 307.8 | | | |



| | | | | |
|-------------|---|---------|-------------|---|
| CATEGORY | A | B | C | D |
| RNP 0.11 DA | | 1067/26 | 325 (400-½) | |
| RNP 0.30 DA | | 1177/40 | 435 (500-¾) | |

AUTHORIZATION REQUIRED



HIRL all Rwys
REIL Rwys 18L and 23
TDZ/CL Rwys 18R, 36L, 36C and 36R

SE-2, 25 MAR 2021 to 22 APR 2021

SE-2, 25 MAR 2021 to 22 APR 2021