

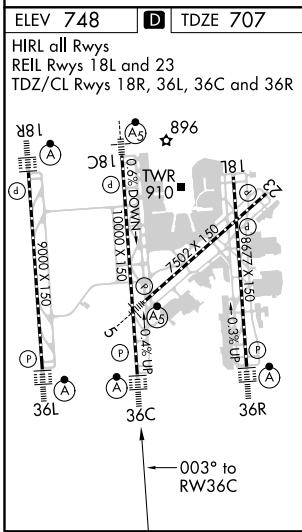
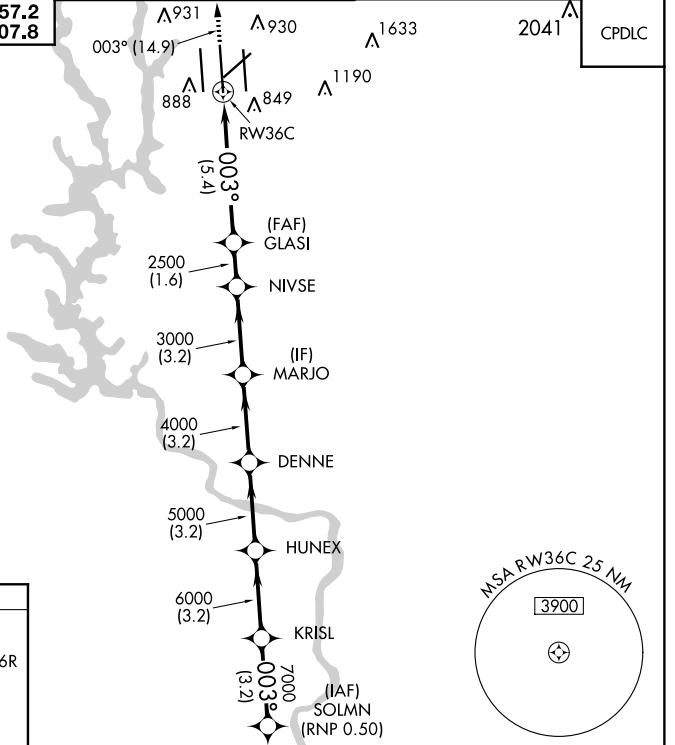
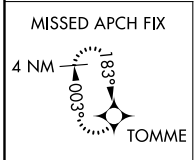
APP CRS	Rwy Idg	<b>10000</b>
<b>003°</b>	TDZE	<b>707</b>
	Apt Elev	<b>748</b>

# RNAV (RNP) Z RWY 36C

CHARLOTTE/DOUGLAS INTL (CLT)

RNP AR APCH.	<p>Simultaneous approach authorized. Use of FD or AP required during simultaneous operations. For uncompensated Baro-VNAV systems, procedure NA below -10°C or above 47°C. For inop ALS, increase RNP 0.11 visibility all Cats to RVR 6000 and RNP 0.30 visibility all Cats to 1/2 SM.</p>	ALS-2	MISSED APPROACH: Climb to 3000 on track 003° to TOMME and hold.

D-ATIS	CHARLOTTE APP CON	CHARLOTTE TOWER	GND CON	CLNC DEL
ARR <b>121.15</b>	(001°-119°) <b>128.32</b>	(Rwys 18L-36R, 5-23) <b>118.1 257.8</b>	<b>121.8 348.6 (WEST)</b>	<b>127.15</b>
DEP <b>132.1</b>	(120°-295°) <b>120.05</b>	(Rwy 18C-36C) <b>126.4 257.8</b>	<b>121.9 348.6 (EAST)</b>	<b>348.6</b>
	(296°-360°) <b>134.75</b>	(Rwy 18R-36L) <b>133.35 257.8</b>		
	(180°-359°) <b>257.2</b>			
	(360°-179°) <b>307.8</b>			



3000	TOMME	VGSI and RNAV glidepath not coincident (VGSI Angle 3.00/TCH 72).				SOLMN
↑	tr 003°	GLASI	NIVSE	MARJO	DENNE	KRISL
		2500	3000	4000	5000	6000
		2500	3000	4000	5000	6000
		5.4 NM	1.6 NM	3.2 NM	3.2 NM	3.2 NM
						8000
						7000
						6000
						5000
						4000
						3000
						2500
						2000
						1500
						1000
						500
						0
						GP 3.00°
						TCH 57

CATEGORY	A	B	C	D
RNP 0.11 DA		1040/40	333 (300-¾)	
RNP 0.30 DA		1143/50	436 (400-1)	

**AUTHORIZATION REQUIRED**

SE-2, 25 MAR 2021 to 22 APR 2021

SE-2, 25 MAR 2021 to 22 APR 2021