

WAAS CH 56515 W36A	APP CRS 003°	Rwy Idg TDZE 744 Apt Elev 748	9000
--	------------------------	---	-------------

RNAV (GPS) Y RWY 36L

CHARLOTTE/DOUGLAS INTL (CLT)

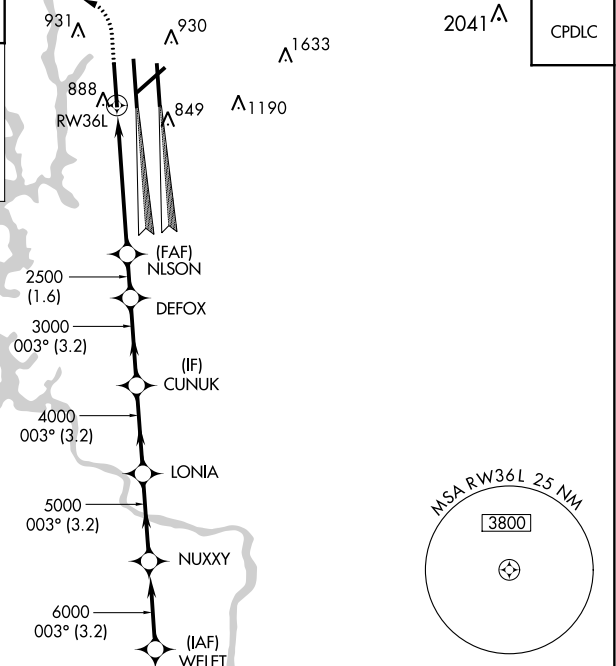
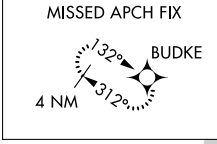
RADAR required for procedure entry. RNP APCH.

⚠ Circling NA at night. Simultaneous approach authorized. LNAV procedure NA during simultaneous operations. Use of FD or AP required during simultaneous operations. For inop ALS, increase LNAV/VNAV all Cats visibility to RVR 4500 and increase LNAV Cats C/D visibility to RVR 6000. For uncompensated Baro-VNAV systems, LNAV/VNAV NA below -10°C or above 54°C.

ALS-F-2

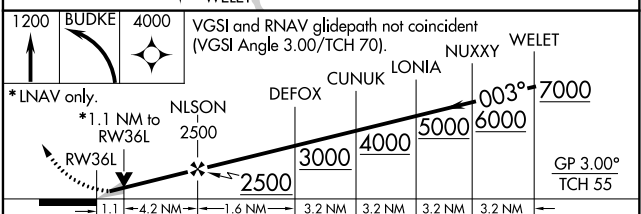
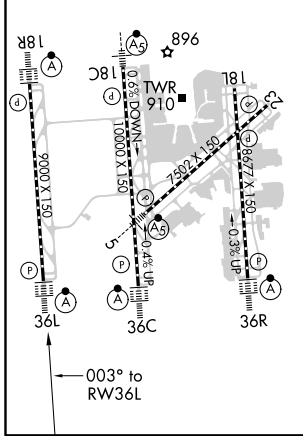
MISSED APPROACH: Climb to 1200 then climbing left turn to 4000 direct BUDKE and hold.

D-ATIS ARR 121.15 DEP 132.1	CHARLOTTE APP CON (001°-119°) 128.32 (120°-295°) 120.05 (296°-360°) 134.75 (180°-359°) 257.2 (360°-179°) 307.8	CHARLOTTE TOWER (Rwys 18L-36R, 5-23) 118.1 257.8 (Rwy 18C-36C) 126.4 257.8 (Rwy 18R-36L) 133.35 257.8	GND CON 121.8 348.6 (WEST) 121.9 348.6 (EAST)	CLNC DEL 127.15 348.6
---	--	---	---	---



ELEV 748	D	TDZE 744
----------	----------	----------

HIRL all Rwys
REIL Rwys 18L and 23
TDZ/CL Rwys 18R, 36L, 36C and 36R



CATEGORY	A	B	C	D
LPV DA	944/18		200 (200-½)	
LNAV/VNAV DA	1049/24		305 (400-½)	
LNAV MDA	1140/24	396 (400-½)	1140/35	396 (400-¾)
C CIRCLING	1380-1	632 (700-1)	1500-2¼ 752 (800-2¼)	1500-2½ 752 (800-2½)

SE-2, 25 MAR 2021 to 22 APR 2021

SE-2, 25 MAR 2021 to 22 APR 2021