

WAAS CH 65614 W04A	APP CRS 047°	Rwy Idg 5927 TDZE 619 Apt Elev 620
--	------------------------	---

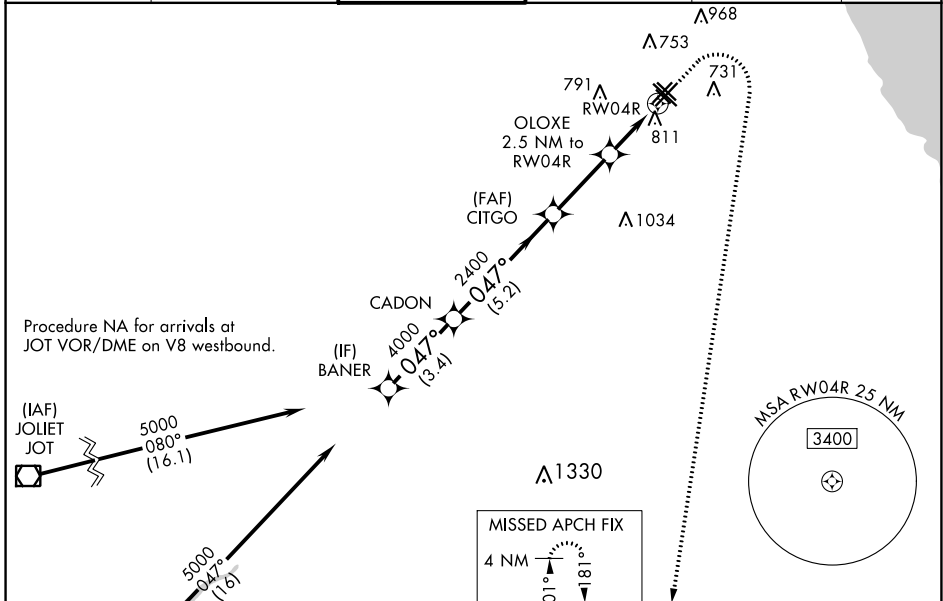
RNAV (GPS) Z RWY 4R

CHICAGO MIDWAY INTL (MDW)

⚠ Circling to Rwy 31R NA at night. For uncompensated Baro-VNAV systems, LNAV/VNAV NA below -19°C (-2°F) or above 54°C (130° F). Rwy 4R helicopter visibility reduction below RVR 4000 NA. DME/DME RNP-0.3 NA.

⚠ MISSED APPROACH: Climb to 1100 then climbing right turn to 2600 direct EON VORTAC and hold.

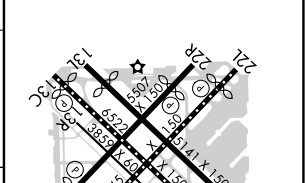
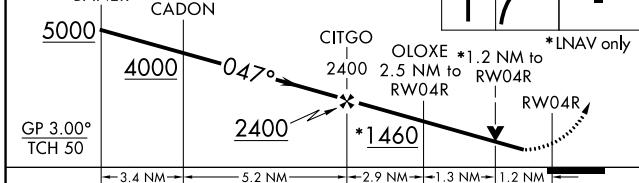
D-ATIS 132.75	CHICAGO APP CON 128.2 353.875	MIDWAY TOWER 135.2 269.125	GND CON 121.65	CLNC DEL 124.625	CPDLC
-------------------------	---	--------------------------------------	--------------------------	----------------------------	-------



ELEV 620	D TDZE 619
----------	-------------------

VGSI and RNAV glidepath not coincident (VGSI Angle 3.00/TCH 66).

HIRL Rwy 13C-31C and 4R-22L
MIRL Rwy 4L-22R, 13L-31R, and 13R-31L
REIL Rwy 4R, 22L, and 31C
RLS Rwy 13C and 31C



CATEGORY	A	B	C	D
LPV DA	869/40	250 (300-¾)	869/50	250 (300-1)
LNAV/VNAV DA	1097-1½		478 (500-1½)	
LNAV MDA	1080/55	461 (500-1)	1080-1¾	461 (500-1¾)
C CIRCLING	1120-1	500 (500-1)	1340-2 720 (800-2)	1340-2¼ 720 (800-2¼)

EC-3, 25 MAR 2021 to 22 APR 2021

EC-3, 25 MAR 2021 to 22 APR 2021