

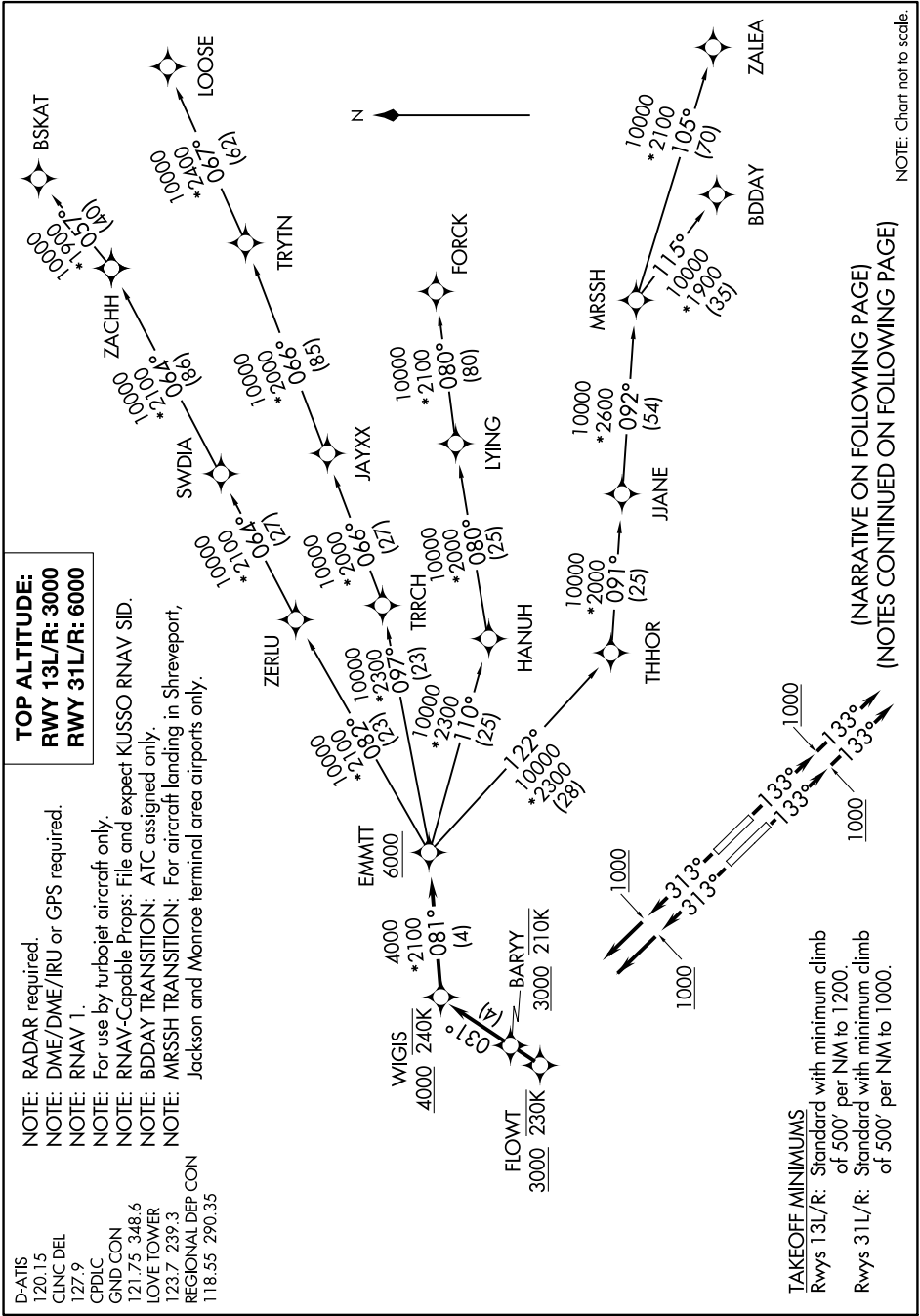
EMMTT FOUR DEPARTURE (RNAV)

SC-2, 25 MAR 2021 to 22 APR 2021

D-ATIS 120.15
 CLNC DEL 127.9
 CPDLC
 GND CON 121.75 348.6
 LOVE TOWER 123.7 239.3
 REGIONAL DEP CON 118.55 290.35

NOTE: RADAR required.
 NOTE: DME/DME/IRU or GPS required.
 NOTE: RNAV 1.
 NOTE: For use by turbojet aircraft only.
 NOTE: RNAV-Capable Props: File and expect KUSSO RNAV SID.
 NOTE: BDDAY TRANSITION: ATC assigned only.
 NOTE: MRSSH TRANSITION: For aircraft landing in Shreveport, Jackson and Monroe terminal area airports only.

TOP ALTITUDE:
RWY 13L/R: 3000
RWY 31L/R: 6000



TAKEOFF MINIMUMS
 Rwy 13L/R: Standard with minimum climb of 500' per NM to 1200.
 Rwy 31L/R: Standard with minimum climb of 500' per NM to 1000.

(NARRATIVE ON FOLLOWING PAGE)
 (NOTES CONTINUED ON FOLLOWING PAGE)

NOTE: Chart not to scale.

SC-2, 25 MAR 2021 to 22 APR 2021

EMMTT FOUR DEPARTURE (RNAV)