

LOC/DME I-OWW <b>111.5</b> Chan <b>52</b>	APP CRS <b>313°</b>	Rwy Idg <b>6952</b> TDZE <b>487</b> Apt Elev <b>487</b>
---	------------------------	---

# ILS RWY 31R (SA CAT I & II)

DALLAS LOVE FIELD (DAL)

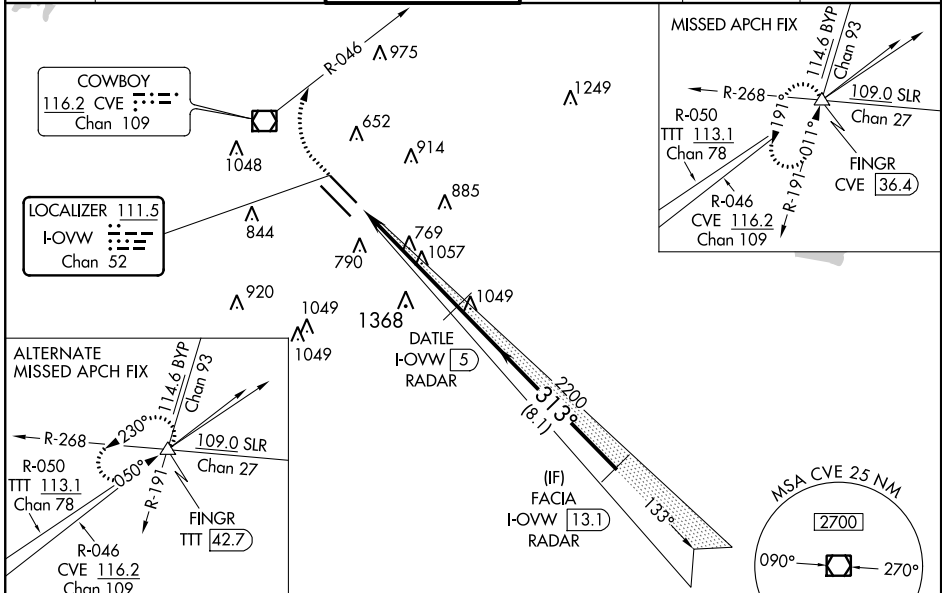
RADAR required for procedure entry.

- Simultaneous approach authorized.
- SA CAT I: Requires specific OPSPEC, MSPEC or LOA approval and use of HUD to DH.
- SA CAT II: Reduced Lighting: Requires specific OPSPEC, MSPEC or LOA approval and use of autoland or HUD to touchdown.

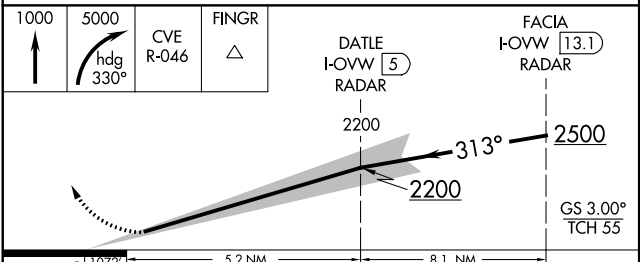
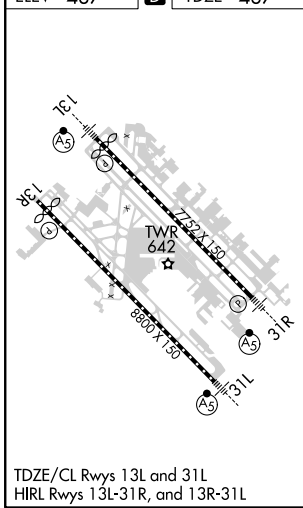


MISSED APPROACH: Climb to 1000 then climbing right turn to 5000 on heading 330° and CVE VOR/DME R-046 to FINGR INT/CVE 36.4 DME and hold.

D-ATIS <b>120.15</b>	REGIONAL APP CON NORTH <b>124.3 282.275</b> SOUTH <b>125.2 343.65</b>	LOVE TOWER <b>123.7 239.3</b>	GND CON <b>121.75 348.6</b>	CLNC DEL <b>127.9</b>	CPDLC
-------------------------	---	----------------------------------	--------------------------------	--------------------------	-------



ELEV <b>487</b>	<b>D</b>	TDZE <b>487</b>
-----------------	----------	-----------------



CATEGORY	A	B	C	D
S-ILS 31R	SA CAT I	RA 151/14	150 DA 637	
S-ILS 31R	SA CAT II	RA 98/12	100 DA 587	

**SA CATEGORY I & II ILS - SPECIAL AIRCREW & AIRCRAFT CERTIFICATION REQUIRED**

SC-2, 25 MAR 2021 to 22 APR 2021

SC-2, 25 MAR 2021 to 22 APR 2021