

# JOE POOL TWO DEPARTURE

D-ATIS 120.15  
 CLNC DEL 127.9  
 CPDLC  
 GND CON 121.75 348.6  
 LOVE TOWER 123.7 239.3  
 REGIONAL DEP CON  
 125.125 353.95 (Rwy 13L/R)  
 118.55 290.35 (Rwy 31L/R)

**TOP ALTITUDE  
 ALL RUNWAYS:  
 ASSIGNED BY ATC**

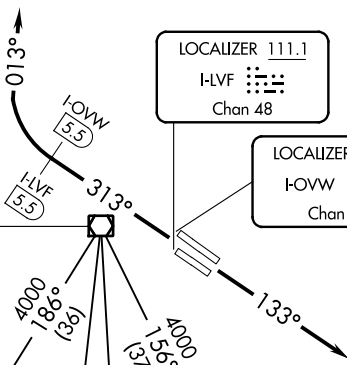
**MAVERICK**  
 113.1 TTT  
 Chan 78  
 N32°52.15'  
 W97°02.43'

**WACO**  
 115.3 ACT  
 Chan 100  
 N31°39.73'  
 W97°16.14'  
 L-19, H-6

**HOARY**  
 N30°34.63'  
 W97°46.52'  
 L-19-21, H-7

**CENTEX**  
 112.8 CWK  
 Chan 75

**SAN ANTONIO**  
 116.8 SAT  
 Chan 115  
 N29°38.64'-W98°27.68'  
 L-19, H-7



**NELYN**  
 N32°17.10'  
 W97°11.15'

**JASPA**  
 N32°17.10'  
 W97°03.54'  
 L-17

**ARDIA**  
 N32°17.10'  
 W96°56.27'  
 L-17

**DARTZ**  
 N32°17.15'  
 W96°48.66'

**BRDEN**  
 N31°53.19'  
 W96°39.35'

**TORNN**  
 N31°31.22'  
 W96°30.88'  
 H-6

**LEONA**  
 110.8 LOA  
 Chan 45

**ELLVR**  
 N31°42.49'  
 W96°50.27'  
 L-19, H-6

**COLLEGE STATION**  
 113.3 CLL  
 Chan 80  
 N30°36.30'  
 W96°25.24'  
 L-19-21, H-7

**BILEE**  
 N31°09.87'  
 W96°22.89'  
 L-19-21, H-6

NOTE: RADAR and DME required.

**TAKEOFF MINIMUMS**

- Rwys 31L/R: Standard.
- Rwy 13L: Standard with minimum climb of 290' per NM to 1700.
- Rwy 13R: Standard with minimum climb of 315' per NM to 1700.

**NAVASOTA**  
 115.9 TNV  
 Chan 106

(NARRATIVE ON FOLLOWING PAGE)

NOTE: Chart not to scale.

# JOE POOL TWO DEPARTURE

SC-2, 25 MAR 2021 to 22 APR 2021

SC-2, 25 MAR 2021 to 22 APR 2021