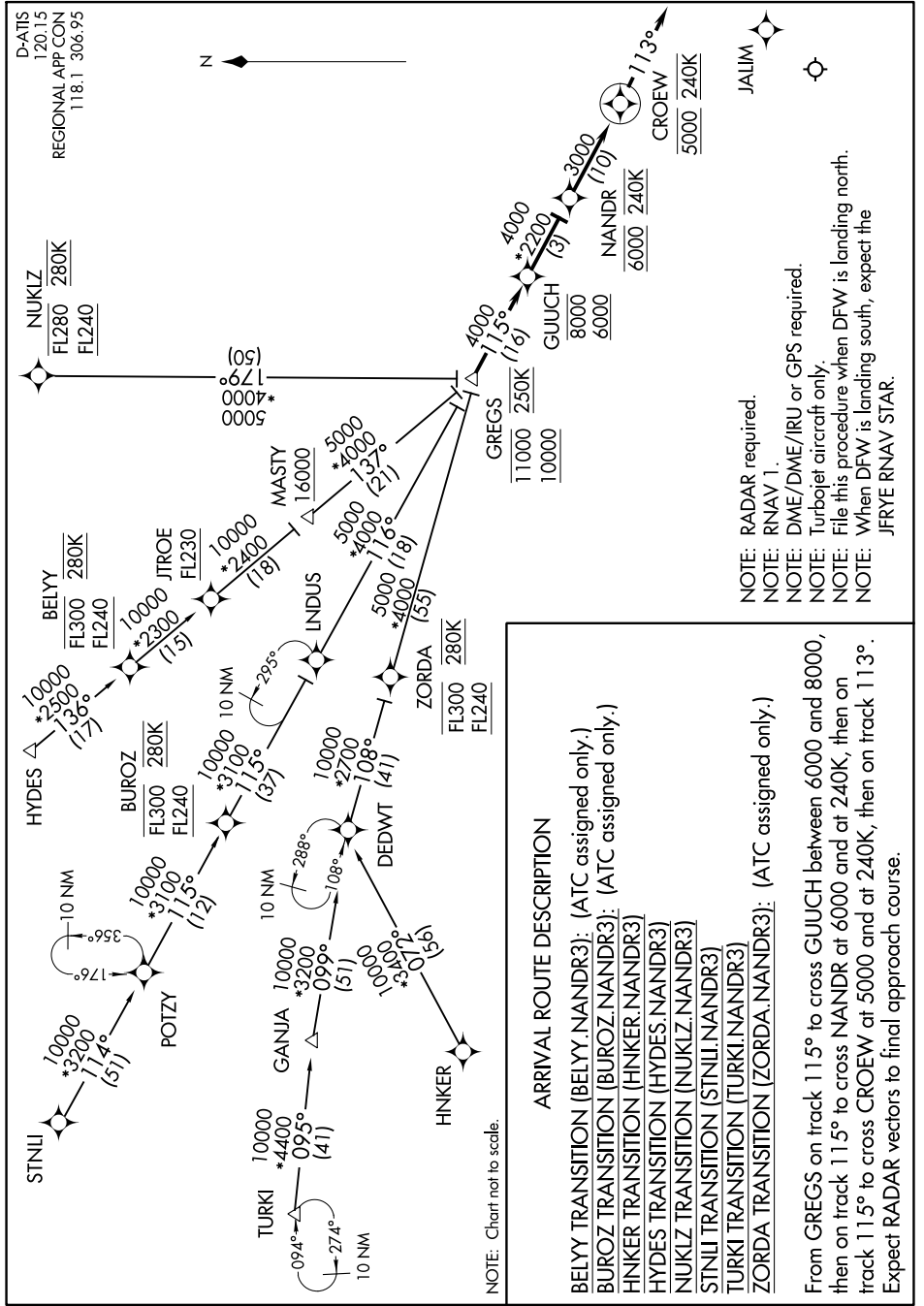


# NANDR THREE ARRIVAL (RNAV)

DALLAS, TEXAS



**ARRIVAL ROUTE DESCRIPTION**

BELYI TRANSITION (BELYI.NANDR3): (ATC assigned only.)  
 BUROZ TRANSITION (BUROZ.NANDR3): (ATC assigned only.)  
 HNKER TRANSITION (HNKER.NANDR3)  
 HYDES TRANSITION (HYDES.NANDR3)  
 NUKLZ TRANSITION (NUKLZ.NANDR3)  
 STNLI TRANSITION (STNLI.NANDR3)  
 TURKI TRANSITION (TURKI.NANDR3)  
 ZORDA TRANSITION (ZORDA.NANDR3): (ATC assigned only.)

From GREGS on track 115° to cross GUUCH between 6000 and 8000, then on track 115° to cross NANDR at 6000 and at 240K, then on track 115° to cross CROEW at 5000 and at 240K, then on track 113°. Expect RADAR vectors to final approach course.

- NOTE: RADAR required.
- NOTE: RNAV 1.
- NOTE: DME/DME/IRU or GFS required.
- NOTE: Turbojet aircraft only.
- NOTE: File this procedure when DFW is landing north.
- NOTE: When DFW is landing south, expect the JFRYE RNAV STAR.

SC-2, 25 MAR 2021 to 22 APR 2021

SC-2, 25 MAR 2021 to 22 APR 2021