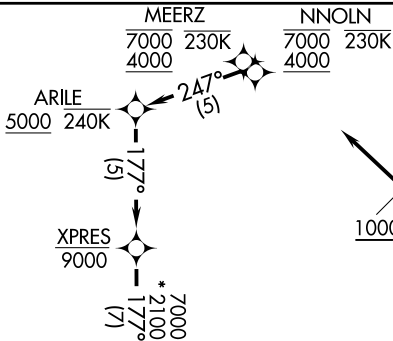


# RAMBL FIVE DEPARTURE (RNAV)

D-ATIS  
120.15  
CLNC DEL  
127.9  
CPDLC  
GND CON  
121.75 348.6  
LOVE TOWER  
123.7 239.3  
REGIONAL DEP CON  
126.475 363.15

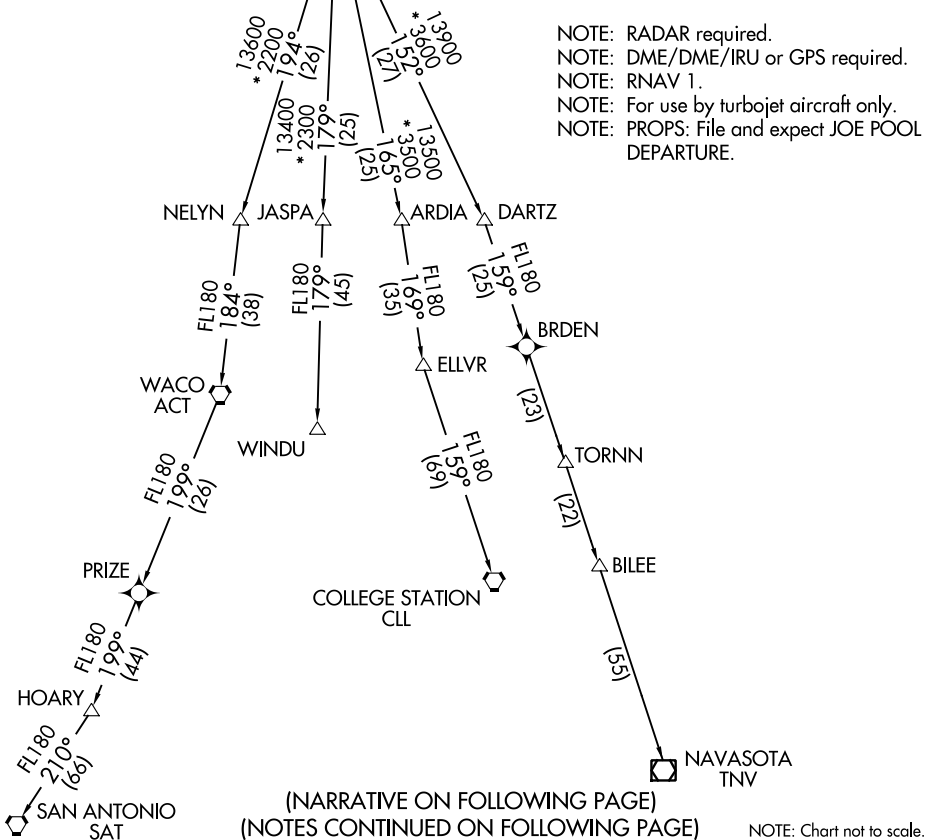


**TOP ALTITUDE:**  
Rwys 13L/R: 3000  
Rwys 31L/R: 10000

### TAKEOFF MINIMUMS

Rwys 13L/R: Standard with minimum climb of 500' per NM to 1200.  
Rwys 31L/R: Standard with minimum climb of 500' per NM to 1000.

- NOTE: RADAR required.
- NOTE: DME/DME/IRU or GPS required.
- NOTE: RNAV 1.
- NOTE: For use by turbojet aircraft only.
- NOTE: PROPS: File and expect JOE POOL DEPARTURE.



(NARRATIVE ON FOLLOWING PAGE)  
(NOTES CONTINUED ON FOLLOWING PAGE)

NOTE: Chart not to scale.

# RAMBL FIVE DEPARTURE (RNAV)

SC-2, 25 MAR 2021 to 22 APR 2021

SC-2, 25 MAR 2021 to 22 APR 2021