


RNAV (RNP) W RWY 13L

DALLAS LOVE FIELD (DAL)

APP CRS	Rwly Idg	7352
133°	TDZE	485
	Apt Elev	487

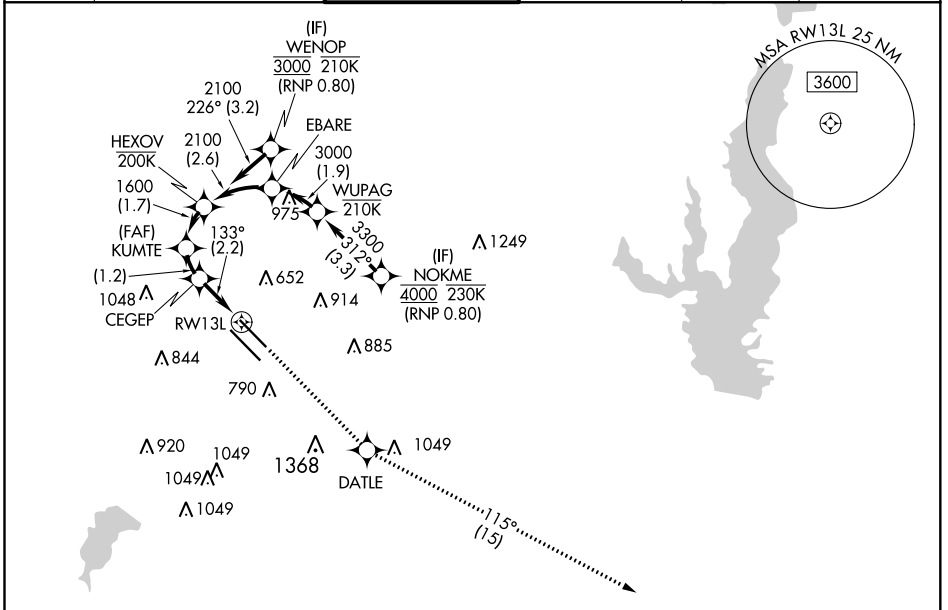
RNP AR APCH. RF required.

Simultaneous approach authorized. For uncompensated Baro-VNAV systems, procedure NA below -6°C or above 54°C. For inop ALS, increase RNP 0.11 all Cats visibility to RVR 4500.

MALSR 

MISSED APPROACH: Climb to 3000 direct DATLE and on track 115° to DUMPY and hold.

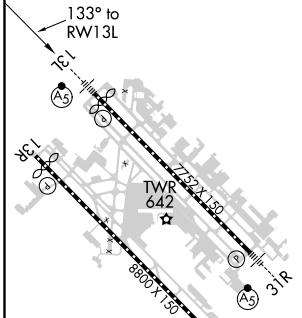
D-ATIS	REGIONAL APP CON	LOVE TOWER	GND CON	CLNC DEL	CPDLC
120.15	NORTH 124.3 282.275 SOUTH 125.2 343.65	123.7 239.3	121.75 348.6	127.9	



SC-2, 25 MAR 2021 to 22 APR 2021

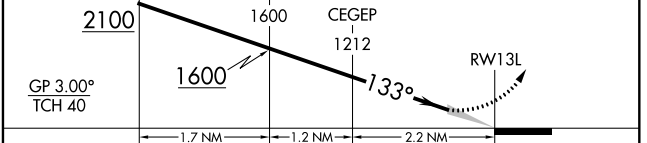
SC-2, 25 MAR 2021 to 22 APR 2021

ELEV	487	D	TDZE	485
------	------------	----------	------	------------



See planview for multiple IF locations.

3000	DATLE	tr 115°	DUMPY
------	-------	---------	-------



CATEGORY	A	B	C	D
RNP 0.11 DA	754/24		269 (300-½)	
RNP 0.30 DA	846/40		361 (400-¾)	

TDZ/CL Rwy 13L and 31L
 HIRL Rwy 13L-31R, and 13R-31L

AUTHORIZATION REQUIRED

DALLAS, TEXAS
 Orig-C 13SEP18

32°51'N-96°51'W

DALLAS LOVE FIELD (DAL)
RNAV (RNP) W RWY 13L