

# RNAV (RNP) Z RWY 31L

DALLAS LOVE FIELD (DAL)

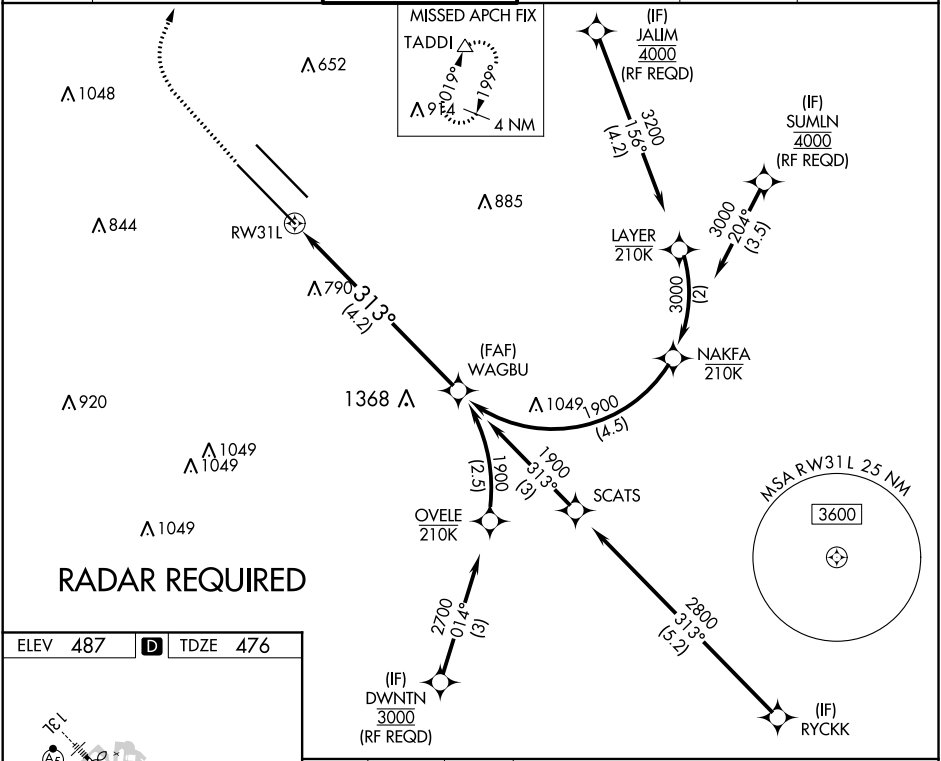
APP CRS <b>313°</b>	Rwy Idg <b>8000</b>
	TDZE <b>476</b>
	Apt Elev <b>487</b>

▼ For uncompensated Baro-VNAV systems, procedure NA below -5°C (23°F) or above 48°C (119°F). Simultaneous approach authorized. GPS required. Use of FD or AP providing RNAV track guidance required during simultaneous operations. For inop MALSR, increase RNP 0.30 visibility all Cats to 2½ miles.



MISSED APPROACH: Climb to 1700 then climbing right turn to 4000 direct TADDI and hold.

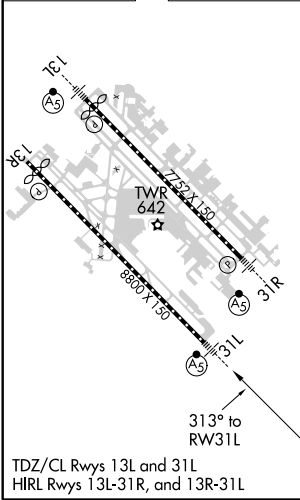
D-ATIS <b>120.15</b>	REGIONAL APP CON NORTH <b>124.3 282.275</b> SOUTH <b>125.2 343.65</b>	LOVE TOWER <b>123.7 239.3</b>	GND CON <b>121.75 348.6</b>	CLNC DEL <b>127.9</b>	CPDLC
-------------------------	---	----------------------------------	--------------------------------	--------------------------	-------



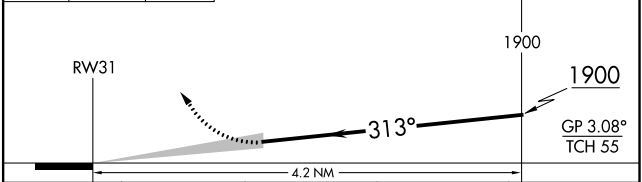
SC-2, 25 MAR 2021 to 22 APR 2021

SC-2, 25 MAR 2021 to 22 APR 2021

ELEV 487	<b>D</b>	TDZE 476
----------	----------	----------



1700	4000	TADDI	See planview for multiple IF locations.
↑	↷	△	



CATEGORY	A	B	C	D
RNP 0.30 DA		1117-1½	641 (700-1½)	

## AUTHORIZATION REQUIRED