


WAAS CH <b>72808</b> W31A	APP CRS <b>313°</b>	Rwy Idg TDZE <b>477</b> Apt Elev <b>487</b>
---------------------------------	------------------------	---

# RNAV (GPS) Y RWY 31L

DALLAS LOVE FIELD (DAL)

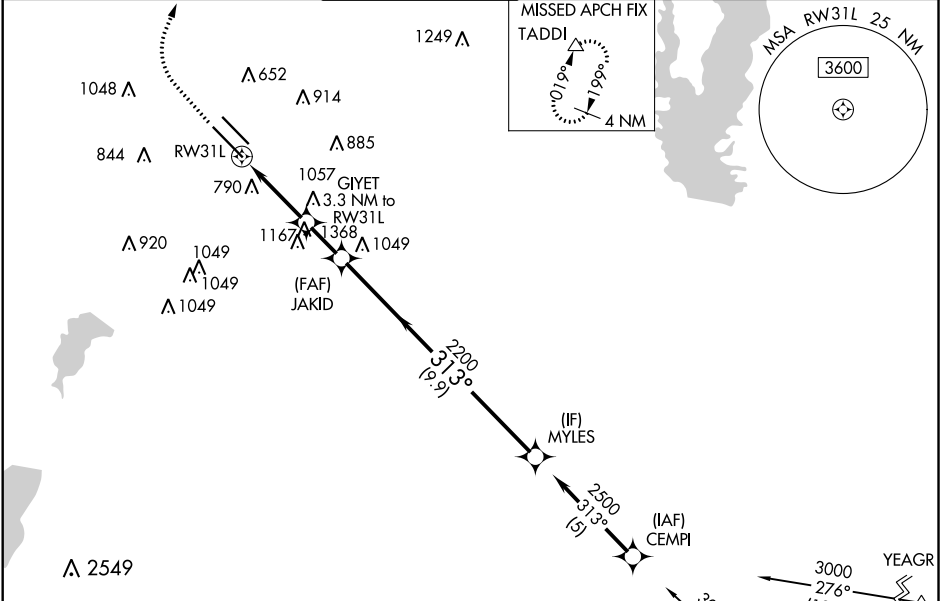
RNP APCH.

**Simultaneous approach authorized. Use of FD or AP providing RNAV track guidance required during simultaneous operations. LNAV procedure NA during simultaneous operations. For inop ALS, increase LPV all Cats visibility to RVR 4500.**

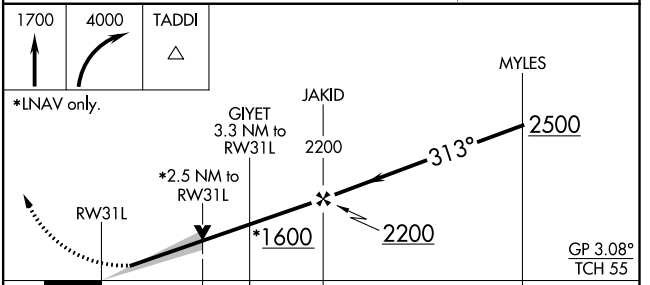
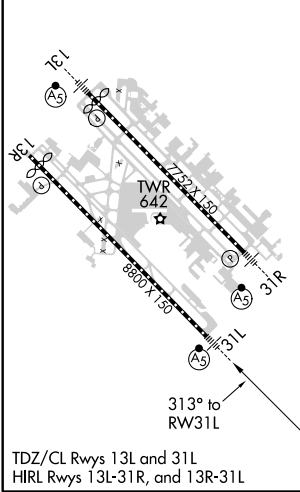
MALSR 

MISSED APPROACH: Climb to 1700 then climbing right turn to 4000 direct TADDI and hold.

D-ATIS <b>120.15</b>	REGIONAL APP CON NORTH <b>124.3 282.275</b> SOUTH <b>125.2 343.65</b>	LOVE TOWER <b>123.7 239.3</b>	GND CON <b>121.75 348.6</b>	CLNC DEL <b>127.9</b>	CPDLC
-------------------------	---	----------------------------------	--------------------------------	--------------------------	-------



ELEV 487	<b>D</b>	TDZE 477
----------	----------	----------



CATEGORY	A	B	C	D
LPV DA	770/22 293 (300-1/2)			
LNAV MDA	1360/40	883 (900-3/4)	1360-2	883 (900-2)
<b>C</b> CIRCLING	1360-1/4	873 (900-1/4)	1360-2 1/2 873 (900-2 1/2)	1520-3 1033 (1100-3)

SC-2, 25 MAR 2021 to 22 APR 2021

SC-2, 25 MAR 2021 to 22 APR 2021