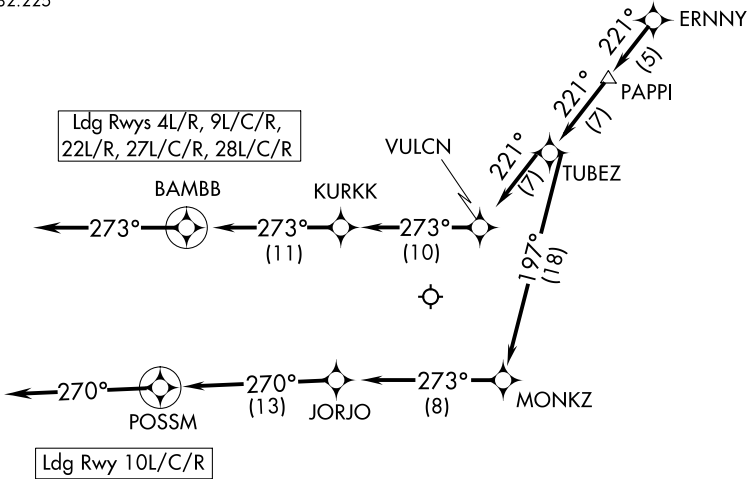


ERNNY SEVEN ARRIVAL (RNAV) Arrival Routes

CHICAGO APP CON
119.0 292.125
D-ATIS
135.4 282.225



- NOTE: RADAR required.
- NOTE: RNAV 1.
- NOTE: DME/DME/IRU or GPS required.
- NOTE: Landing Rwy 4L/R, 22L/R, 27L/C/R, 28L/C/R: Expect RADAR vectors to final approach course after ERNNY.

NOTE: Chart not to scale.

ARRIVAL ROUTE DESCRIPTION

From ERNNY on track 221° to PAPPY, then on track 221° to TUBEZ.

LANDING RWYS 4L/R, 9L/C/R, 22L/R, 27L/C/R, 28L/C/R: From TUBEZ on track 221° to VULCN, then on track 273° to KURKK, then on track 273° to BAMBB, then on track 273°. Expect RADAR vectors to final approach course.

LANDING RWY 10L/C/R: From TUBEZ on track 197° to MONKZ, then on track 273° to JORJO, then on track 270° to POSSM, then on track 270°. Expect RADAR vectors to final approach course.