

LOC/DME I-MED <b>111.1</b> Chan <b>48</b>	APP CRS <b>093°</b>	Rwy Idg <b>12246</b> TDZE <b>672</b> Apt Elev <b>680</b>
---	------------------------	--

# ILS RWY 10L (CAT II & III)

CHICAGO O'HARE INTL (ORD)

From GIBNS: RNAV-1 GPS required.  
 RNAV 1-GPS or RADAR required for procedure entry. DME or RADAR required.  
 Simultaneous approach authorized.

CHICAGO APP CON <b>119.0 292.125</b>	O'HARE TOWERS <b>128.15 348.0</b> (Rwy 9L/27R) <b>133.0 348.0</b> (10R/28L) <b>126.9 132.7 348.0</b> (CENTER)	GND CON (TWR NORTH) <b>124.125</b> (TWR SOUTH) <b>118.05</b> (ALL TWS) <b>226.675</b>	(TWR CENTER) <b>121.75</b> (OBND) <b>121.9</b> (IBND)	CLNC DEL <b>121.6</b>
---	--	--	---	--------------------------

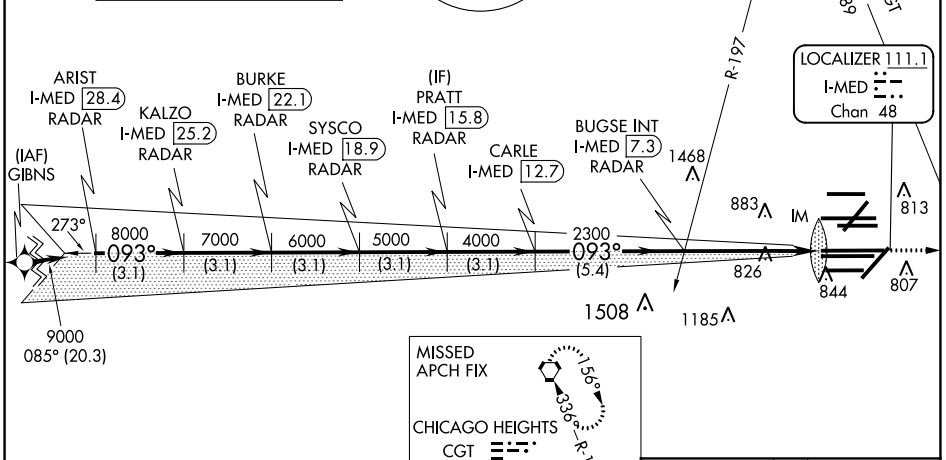
D-ATIS **135.4**  
**282.225**

ALTERNATE MISSED APCH FIX

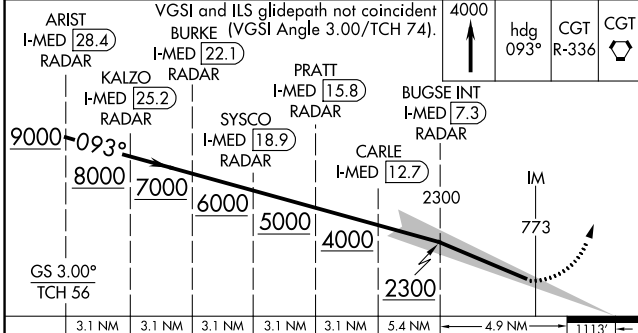
MSA ORD 25 NM  
3400

NORTHBROOK  
113.0 OBK  
Chan 77

CPDLC



MISSED APCH FIX  
 CHICAGO HEIGHTS  
 CGT 114.2  
 Chan 89



CATEGORY	A	B	C	D
S-ILS 10L	CAT II RA 95/12 100 DA 772			
S-ILS 10L	CAT III RVR 06			

**CATEGORY II and III ILS - SPECIAL AIRCREW & AIRCRAFT CERTIFICATION REQUIRED**

ALSIF-2

MISSED APPROACH: Climb to 4000 on heading 093° and CGT VORTAC R-336 to CGT VORTAC and hold.

LOCALIZER 111.1  
I-MED  
Chan 48

ELEV 680 TDZE 672

HIRL all Rwys  
 TDZ/CL all Rwys except 4L

EC-3, 25 MAR 2021 to 22 APR 2021

EC-3, 25 MAR 2021 to 22 APR 2021