

ILS RWY 22L (SA CAT I & II) CHICAGO O'HARE INTL (ORD)

LOC I-LQQ	APP CRS	Rwy ldg TDZE	8075
110.1	225°	654	
		Apt Elev	680

RADAR required for procedure entry.

Simultaneous approach authorized.
 SA CAT I: Requires specific OPSPEC, MSPEC, or LOA approval and use of HUD to DH.
 SA CAT II: Reduced lighting: Requires specific OPSPEC, MSPEC, or LOA approval and use of autoland or HUD to touchdown.

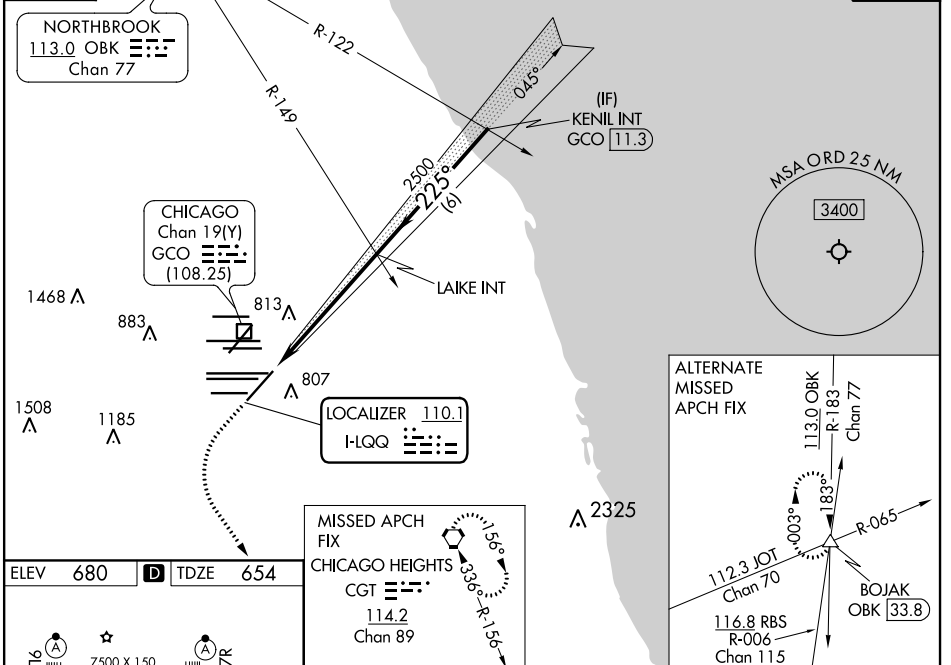


MISSED APPROACH:
Climb to 1100 then climbing left turn to 4000 direct CGT VORTAC and hold.

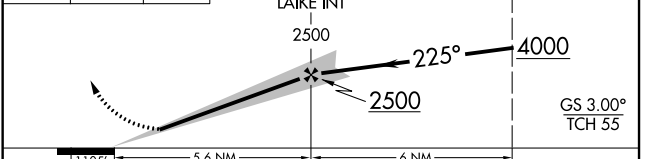
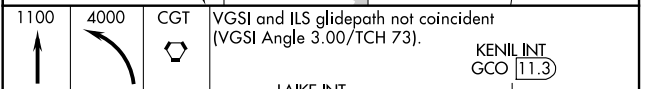
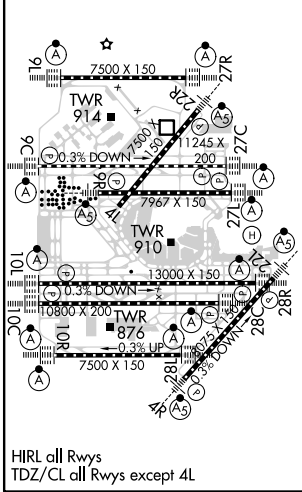
CHICAGO APP CON	O'HARE TOWERS				GND CON	(TWR CENTER)	CLNC DEL			
119.0 292.125	128.15	348.0	(Rwy 9L/27R)	133.0 348.0	(110R/28L)	124.125	(TWR NORTH)	121.75	(OBND)	
	120.75	121.15	126.9	132.7	348.0	(CENTER)	118.05	(TWR SOUTH)	121.9	(IBND)
							226.675	(ALL TWRS)		121.6

D-ATIS
135.4
282.225

CPDLC



ELEV	680	D	TDZE	654
------	-----	---	------	-----



CATEGORY	A	B	C	D
S-ILS 22L	SA CAT I	RA 164/16	150 DA 804	
S-ILS 22L	SA CAT II	RA 112/12	100 DA 754	

SA CATEGORY I & II ILS - SPECIAL AIRCREW & AIRCRAFT CERTIFICATION REQUIRED

EC-3, 25 MAR 2021 to 22 APR 2021

EC-3, 25 MAR 2021 to 22 APR 2021