

LOC/DME I-VZE 108.95 Chan 26 (Y)	APP CRS 273°	Rwy ldg 10800 TDZE 651 Apt Elev 680
---	------------------------	--

ILS RWY 28C (CAT II & III)

CHICAGO O'HARE INTL (ORD)

From VOGLR: RNAV 1-GPS required.
Aircraft not GPS equipped - RADAR required for procedure entry.
DME or RADAR required.

ALSF-2



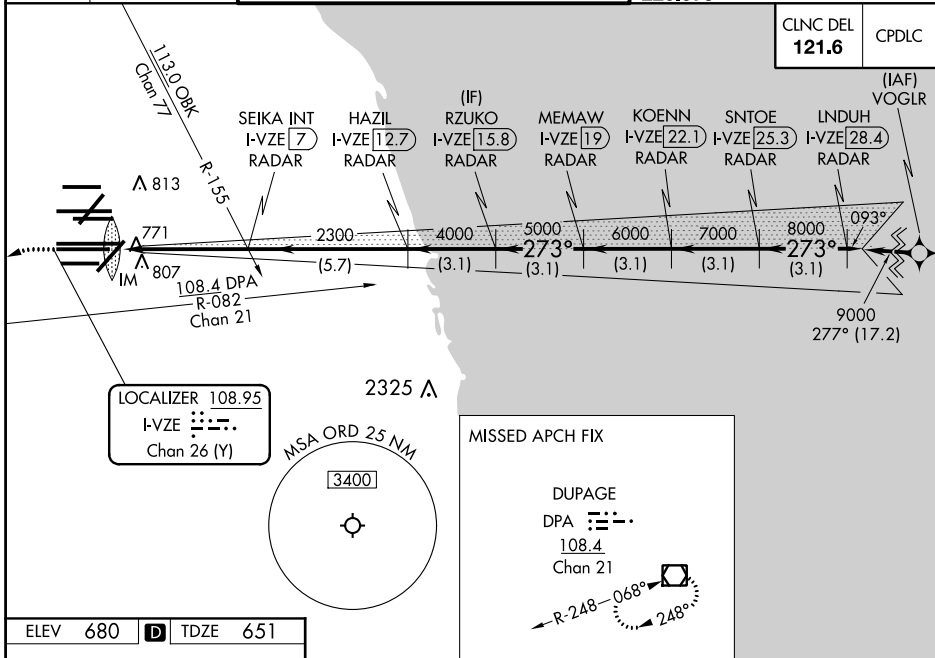
MISSED APPROACH: Climb to 1100 then climbing left turn to 4000 on heading 215° and DPA VOR/DME R-082 to DPA VOR/DME and hold.

Simultaneous approach authorized. CAT II: RVR 1000 authorized with specific OPSPEC, MSPEC, or LOA approval and use of outland or HUD to touchdown.

D-ATIS 135.4	CHICAGO APP CON 119.0 292.125	O'HARE TOWERS 128.15 348.0 (Rwy 9L/27R) 133.0 348.0 (10R/28L) 120.75 121.15 126.9 132.7 348.0 (CENTER)	GND CON (TWR NORTH) 124.125 (TWR SOUTH) 118.05 (ALL TWRs) 226.675	(TWR CENTER) 121.75 (RBNB) 121.9
------------------------	---	--	---	---

CNLC DEL
121.6

CPDLC



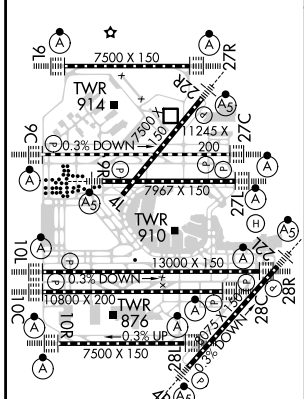
LOCALIZER 108.95
I-VZE
Chan 26 (Y)

MISSED APCH FIX
DUPAGE
DPA 108.4
Chan 21
R-248 068° 248°

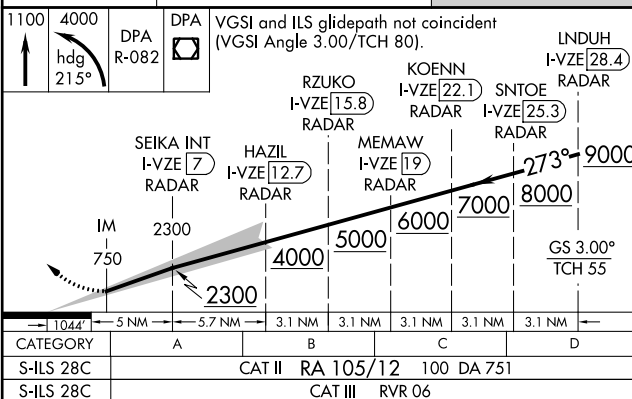
EC-3, 25 MAR 2021 to 22 APR 2021

EC-3, 25 MAR 2021 to 22 APR 2021

ELEV 680	D	TDZE 651
-----------------	----------	-----------------



HIRL all Rwy's
TDZ/CL all Rwy's except 4L



CATEGORY	A	B	C	D
S-ILS 28C	CAT II RA 105/12 100 DA 751			
S-ILS 28C	CAT III RVR 06			

CATEGORY II & III ILS - SPECIAL AIRCREW & AIRCRAFT CERTIFICATION REQUIRED