

LOC/DME I-SXH <b>108.95</b> Chan 26(Y)	APP CRS <b>093°</b>	Rwy Ldg TDZE <b>669</b> Apt Elev <b>680</b>
--	------------------------	---

# ILS or LOC RWY 10C

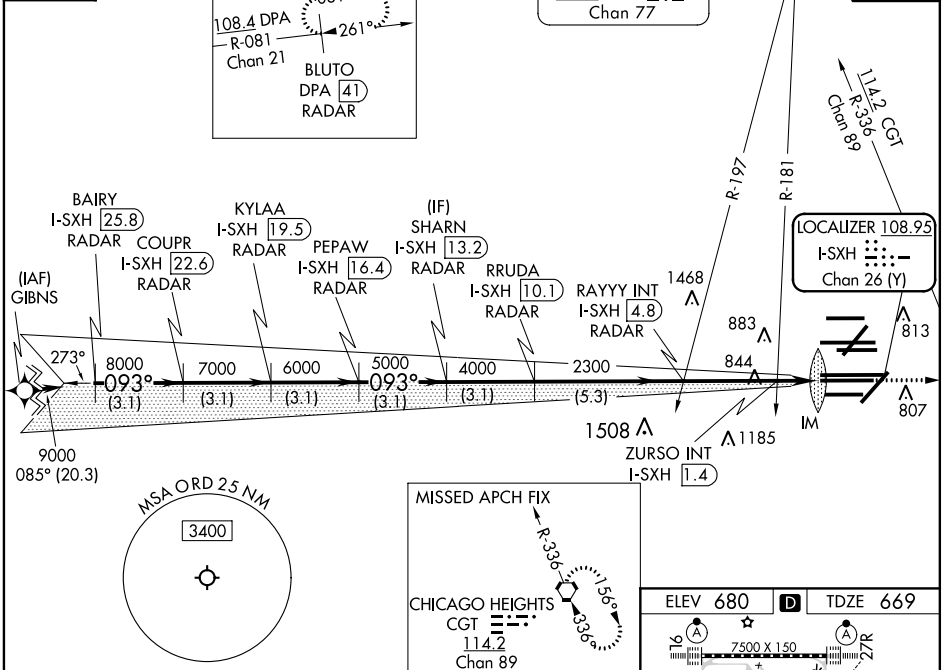
CHICAGO O'HARE INTL (ORD)

From GIBNS: RNAV-1 GPS required.  
 RNAV 1-GPS or RADAR required for procedure entry. DME or RADAR required.  
 Simultaneous approach authorized.

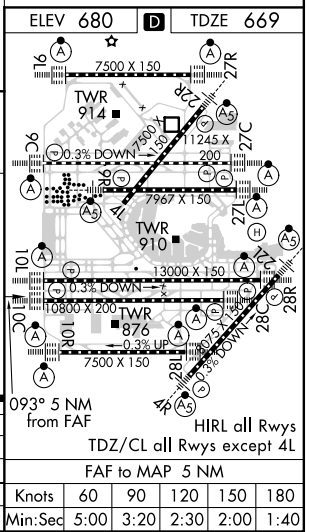
ALSIF-2  
 MISSED APPROACH: Climb to 4000 on heading 093° and CGT VORTAC R-336 to CGT VORTAC and hold.

CHICAGO APP CON <b>119.0 292.125</b>	O'HARE TOWERS Rwy 9L/27R <b>128.15 348.0 133.0 348.0</b> (110R/28L) <b>120.75 121.15 126.9 132.7 348.0</b> (CENTER)	GND CON (TWR NORTH) <b>124.125</b> (TWR SOUTH) <b>118.05</b> (ALL TWRs) <b>226.675</b>	CLNC DEL <b>121.6</b>
---	--	---	--------------------------

D-ATIS <b>135.4</b> <b>282.225</b>	ALTERNATE MISSED APCH FIX	NORTHBROOK 113.0 OBK Chan 77	CPDLC
--	---------------------------	------------------------------------	-------



BAIRY I-SXH [25.8] RADAR	VGSI and ILS glidepath not coincident KYLAA (VGSI Angle 3.00/TCH 75).	4000	hdg 093°	CGT R-336	CGT
COUPR I-SXH [22.6] RADAR	SHARN I-SXH [13.2] RADAR	RAYYY INT I-SXH [4.8] RADAR	* LOC only		
9000 093°	PEPAW I-SXH [16.4] RADAR	RRUDA I-SXH [10.1] RADAR	I-SXH DME ANTENNA		
8000	ZURSO INT I-SXH [1.4]	IM	I-SXH [0.2]		
7000	3.1 NM	3.1 NM	3.1 NM	3.1 NM	3.1 NM
6000	3.1 NM	3.1 NM	3.1 NM	3.1 NM	3.1 NM
5000	3.1 NM	3.1 NM	3.1 NM	3.1 NM	3.1 NM
4000	3.1 NM	3.1 NM	3.1 NM	3.1 NM	3.1 NM
3000	3.1 NM	3.1 NM	3.1 NM	3.1 NM	3.1 NM
2300	5.3 NM	3.4 NM	1.5 NM	0.1 NM	
GS 3.00° TCH 55					
CATEGORY	A		B		D
S-ILS 10C	869/18 200 (200-½)				
S-LOC 10C	1220/24 551 (600-½) 1220/60 551 (600-¼)				
ZURSO FIX MINIMUMS (DUAL VOR RECEIVERS OR DME REQUIRED)					
S-LOC 10C	1100/24 431 (500-½)		1100/40 431 (500-¾)		



EC-3, 25 MAR 2021 to 22 APR 2021

EC-3, 25 MAR 2021 to 22 APR 2021