

LOC/DME I-MED 111.1 Chan 48	APP CRS 093°	Rwy Ldg 12246 TDZE 672 Apt Elev 680
---	------------------------	--

ILS or LOC RWY 10L

CHICAGO O'HARE INTL (ORD)

From GIBNS: RNAV-1 GPS required.

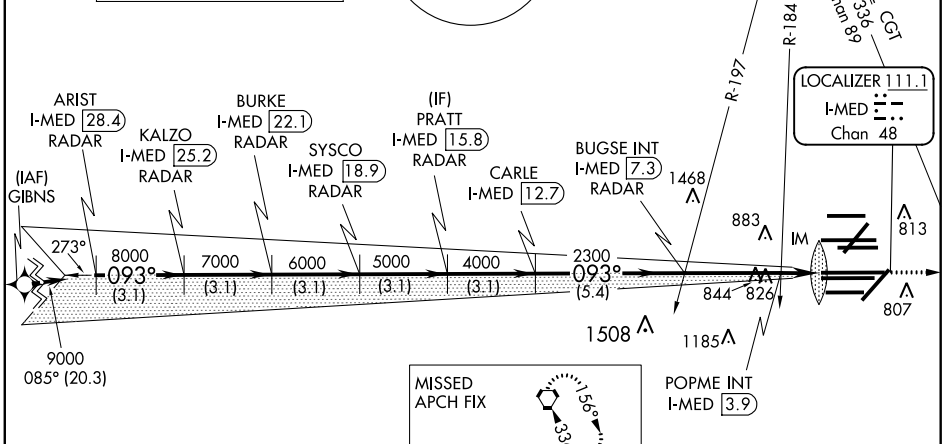
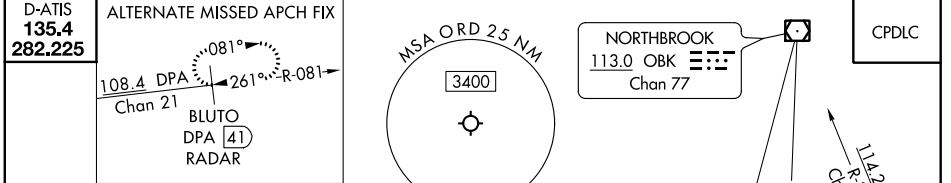
RNAV 1-GPS or RADAR required for procedure entry. DME or RADAR required.

Simultaneous approach authorized.

ALSF-2

MISSED APPROACH: Climb to 4000 on heading 093° and CGT VORTAC R-336 to CGT VORTAC and hold.

CHICAGO APP CON 119.0 292.125	O'HARE TOWERS 128.15 348.0 (Rwy 9L/27R) 133.0 348.0 (10R/28L) 126.9 348.0 (CENTER)	GND CON (TWR CENTER) 124.125 (TWR NORTH) 118.05 (TWR SOUTH) 226.675 (ALL TWRs)	(TWR CENTER) 121.75 (OBND) 121.9 (IBND)	CLNC DEL 121.6
---	--	--	---	--------------------------



ARIST I-MED [28.4] RADAR	BURKE I-MED [22.1] RADAR	PRATT I-MED [15.8] RADAR	BUGSE INT I-MED [7.3]	POPME INT I-MED [3.9]	I-MED [2.4]																										
KALZO I-MED [25.2] RADAR	SYSCO I-MED [18.9] RADAR	CARLE I-MED [12.7] RADAR	CGT R-336	*LOC only.																											
9000 093°	8000 093°	7000 093°	6000 093°	5000 093°	4000 093°																										
3.1 NM	3.1 NM	3.1 NM	3.1 NM	3.1 NM	5.4 NM																										
3.1 NM	3.1 NM	3.1 NM	3.4 NM	1.4 NM	0.1 NM																										
<table border="1"> <tr> <th>CATEGORY</th> <th>A</th> <th>B</th> <th>C</th> <th>D</th> </tr> <tr> <td>S-ILS 10L</td> <td colspan="2">872/18</td> <td colspan="2">200 (200-½)</td> </tr> <tr> <td>S-LOC 10L</td> <td colspan="2">1200/24 528 (600-½)</td> <td colspan="2">1200/55 528 (600-1)</td> </tr> <tr> <td colspan="6">POPME FIX MINIMUMS (DUAL VOR RECEIVERS OR DME REQUIRED)</td> </tr> <tr> <td>S-LOC 10L</td> <td colspan="2">1080/24 408 (400-½)</td> <td colspan="2">1080/40 408 (400-¾)</td> </tr> </table>						CATEGORY	A	B	C	D	S-ILS 10L	872/18		200 (200-½)		S-LOC 10L	1200/24 528 (600-½)		1200/55 528 (600-1)		POPME FIX MINIMUMS (DUAL VOR RECEIVERS OR DME REQUIRED)						S-LOC 10L	1080/24 408 (400-½)		1080/40 408 (400-¾)	
CATEGORY	A	B	C	D																											
S-ILS 10L	872/18		200 (200-½)																												
S-LOC 10L	1200/24 528 (600-½)		1200/55 528 (600-1)																												
POPME FIX MINIMUMS (DUAL VOR RECEIVERS OR DME REQUIRED)																															
S-LOC 10L	1080/24 408 (400-½)		1080/40 408 (400-¾)																												

