

# ILS or LOC RWY 22L

CHICAGO O'HARE INTL (ORD)

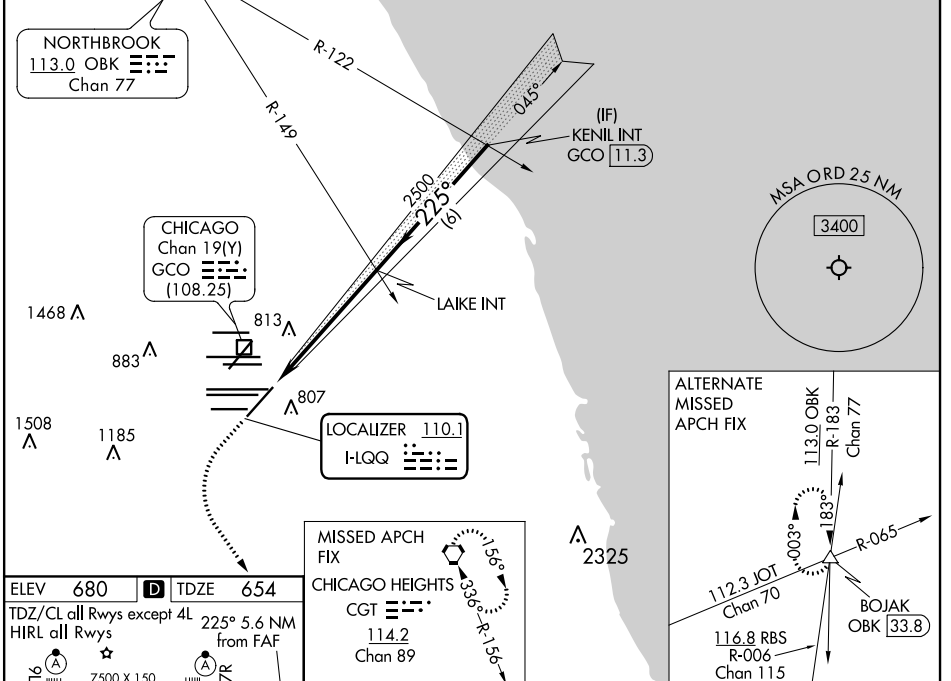
LOC I-LQQ	APP CRS	Rwy ldg TDZE	8075 654
<b>110.1</b>	<b>225°</b>	Apt Elev	680

RADAR required for procedure entry.		MALSR	MISSED APPROACH: Climb to 1100 then climbing left turn to 4000 direct CGT VORTAC and hold.
Simultaneous approach authorized.			

CHICAGO APP CON	O'HARE TOWERS	GND CON	(TWR CENTER)	(TWR NORTH)	(TWR SOUTH)	(IBND)	CLNC DEL
<b>119.0 292.125</b>	<b>128.15 348.0</b> (Rwy 9L/27R)	<b>133.0 348.0</b> (10R/28L)	<b>124.125</b>	<b>121.75</b>	<b>118.05</b>	<b>121.9</b>	<b>121.6</b>
	<b>120.75 121.15 126.9 132.7 348.0</b> (CENTER)	<b>226.675</b> (ALL TWRS)					

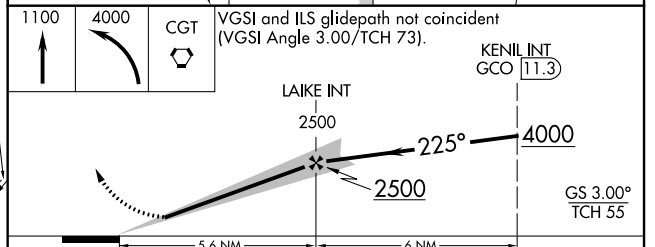
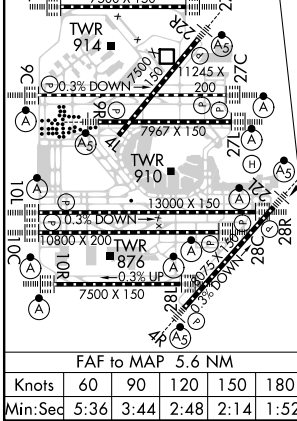
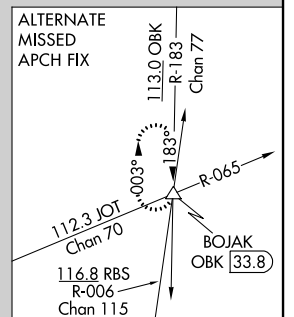
D-ATIS
<b>135.4</b>
<b>282.225</b>

CPDLC



ELEV 680	TDZE 654
TDZ/Cl all Rwy's except 4L 225° 5.6 NM from FAF	
HIRL all Rwy's	

MISSED APCH FIX
CHICAGO HEIGHTS
CGT 114.2
Chan 89



CATEGORY	A	B	C	D
S-ILS 22L	854/18 200 (200-½)			
S-LOC 22L	1120/24	466 (500-½)	1120/50	466 (500-1)
CIRCLING	1220-1	540 (600-1)	1220-1½ 540 (600-½)	1460-2½ 780 (800-2½)

EC-3, 25 MAR 2021 to 22 APR 2021

EC-3, 25 MAR 2021 to 22 APR 2021