

LOC/DME I-UYJ <b>111.9</b> Chan 56	APP CRS <b>273°</b>	Rwy ldg <b>11245</b> TDZE <b>653</b> Apt Elev <b>680</b>
--	------------------------	--

# ILS or LOC RWY 27C

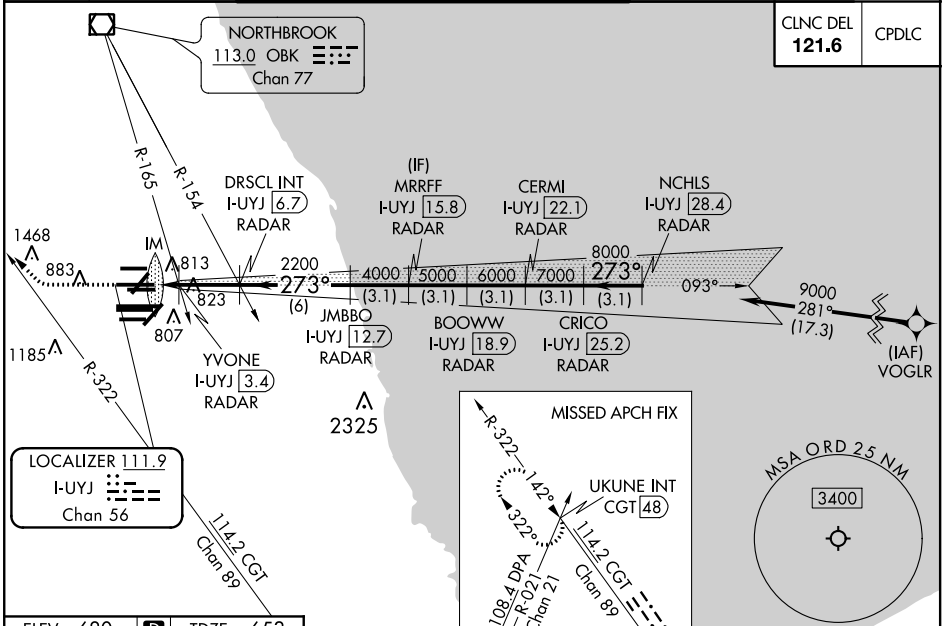
CHICAGO O'HARE INTL (ORD)

From VOGLR: RNAV 1-GPS required. Aircraft not GPS equipped - RADAR required for procedure entry. DME or RADAR required.

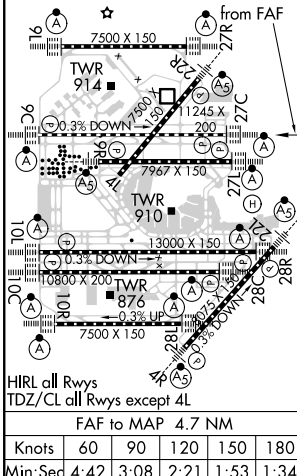
ALSF-2  
MISSED APPROACH: Climb to 1100 then climbing right turn to 4000 on heading 290° and CGT R-322 to UKUNE INT/ CGT 48 DME and hold.

Simultaneous approach authorized. For inop ALS, increase S-LOC 27C Cat C/D visibility to 1½ SM.

D-ATIS <b>135.4</b> <b>282.225</b>	CHICAGO APP CON <b>119.0 292.125</b>	O'HARE TOWERS <b>128.15 348.0</b> (Rwy 9L/27R)   <b>133.0 348.0</b> (10R/28L)   <b>120.75 121.15 126.9 132.7 348.0</b> (CENTER)	GND CON (TWR CENTER)   (TWR NORTH)   (TWR SOUTH)   (ALL TWRs) <b>124.125</b>   <b>121.75</b>   <b>118.05</b>   <b>121.9</b>   <b>226.675</b>
--	---	--	---



ELEV 680	TDZE 653
----------	----------



1100	4000	CGT R-322	UKUNE INT	VGSI and ILS glidepath not coincident (VGSI Angle 3.00/TCH 75).	NCHLS I-UYJ 28.4 RADAR				
*LOC only.		DRSCL INT I-UYJ 6.7 RADAR	JMBBO I-UYJ 12.7 RADAR	BOOWW I-UYJ 18.9 RADAR	CRICO I-UYJ 25.2 RADAR				
I-UYJ 2		YVONE I-UYJ 3.4 RADAR	2200	4000	5000	6000	7000	8000	9000
IM		1160* 2200	3.1 NM	3.1 NM	3.1 NM	3.1 NM	3.1 NM	GS 3.00° TCH 56	
CATEGORY	A	B	C	D					
S-ILS 27C	853/18 200 (200-½)								
S-LOC 27C	1160/24	507 (500-½)	1160/55	507 (500-1)					
YVONE FIX MINIMUMS (DUAL VOR RECEIVERS or DME REQUIRED)									
S-LOC 27C	1080/24	427 (400-½)	1080/40	427 (400-¾)					

EC-3, 25 MAR 2021 to 22 APR 2021

EC-3, 25 MAR 2021 to 22 APR 2021