

LOC/DME I-AIC 110.5 Chan 42	APP CRS 273°	Rwy ldg 7782 TDZE 654 Apt Elev 680
---	------------------------	--

ILS or LOC RWY 27L

CHICAGO O'HARE INTL (ORD)

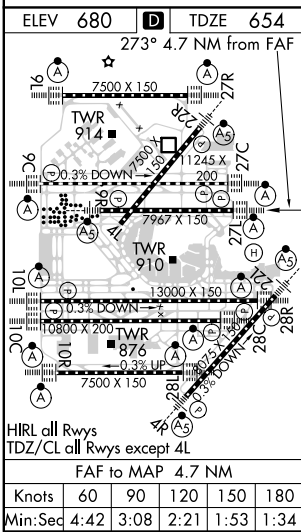
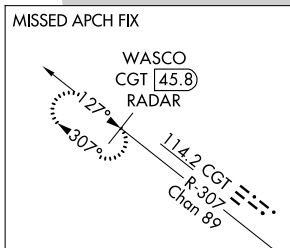
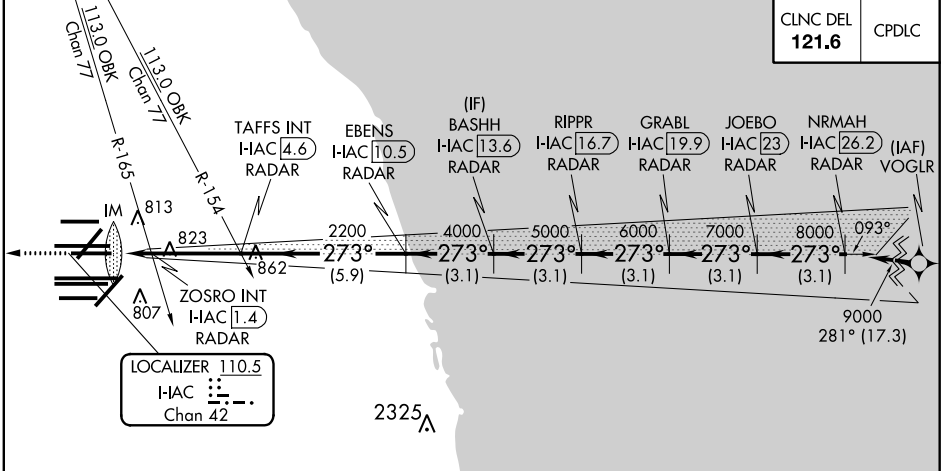
From VOGLR: RNAV 1-GPS required. Aircraft not GPS equipped - RADAR required for procedure entry. DME or RADAR required.

Simultaneous approach authorized.

ALSF-2

MISSED APPROACH: Climb to 1200 then climb to 4000 on heading 265° and on CGT VORTAC R-307 to WASCO/CGT 45.8 DME/RADAR and hold.

D-ATIS 135.4 282.225	CHICAGO APP CON 119.0 292.125	O'HARE TOWERS 128.15 348.0 (Rwy 9L/27R) 133.0 348.0 (10R/28L) 120.75 121.15 126.9 132.7 348.0 (CENTER)	GND CON (TWR CENTER) 124.125 (TWR NORTH) 118.05 (TWR SOUTH) 226.675 (ALL TWRs)	(TWR CENTER) 121.75 (OBND) 121.9 (IBND)
--	---	--	--	---



1200	4000	CGT R-307	WASCO CGT 45.8 RADAR	VGSI and ILS glidepath not coincident (VGSI Angle 3.00/TCH 67).
hdg 265°				
*LOC only	TAFFS INT I-AIC 4.6 RADAR	EBENS I-AIC 10.5 RADAR	RIPPR I-AIC 16.7 RADAR	JOEBO I-AIC 23 RADAR
I-IAC DME ANTENNA	ZOSRO INT I-AIC 1.4 RADAR		GRABL I-AIC 19.9 RADAR	NRMAH I-AIC 26.2 RADAR
I-IAC 0.1				
IM	2200	4000	5000	6000
	1160*	2200	273°	273°
	0.1	1.4	3.2 NM	3.1 NM
9000				
				GS 3.00° TCH 55
CATEGORY	A	B	C	D
S-ILS 27L	854/18 200 (200-½)			
S-LOC 27L	1160/24	506 (500-½)	1160/55	506 (500-1)
ZOSRO FIX MINIMUMS (DUAL VOR RECEIVERS OR DME REQUIRED)				
S-LOC 27L	1080/24	426 (400-½)	1080/40	426 (400-¾)

EC-3, 25 MAR 2021 to 22 APR 2021

EC-3, 25 MAR 2021 to 22 APR 2021