

LOC/DME I-VQX 110.75 Chan 44(Y)	APP CRS 274°	Rwy ldg TDZE Apt Elev	7500 667 680
--	------------------------	-----------------------------	---

ILS or LOC RWY 28L

CHICAGO O'HARE INTL (ORD)

Aircraft not GPS equipped - RADAR required for procedure entry. DME or RADAR required.
From VOGLR: RNAV 1-GPS required.

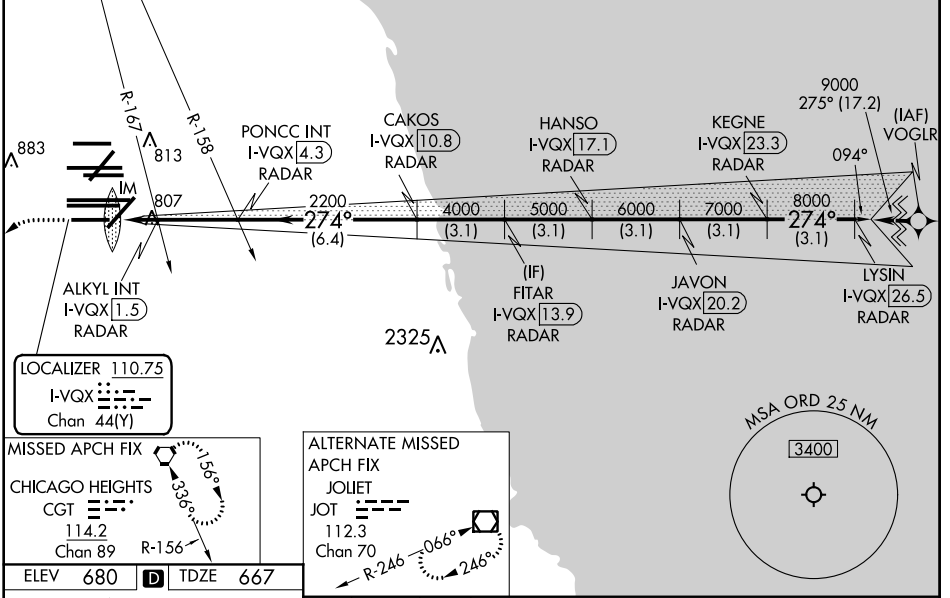
ALSF-2

MISSED APPROACH: Climb to 1200 then climbing left turn to 4000 direct CGT VORTAC and hold.

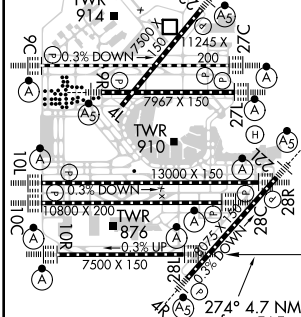
Simultaneous approach authorized.

D-ATIS 135.4 282.225	CHICAGO APP CON 119.0 292.125	O'HARE TOWERS 128.15 348.0 (Rwy 9L/27R) 133.0 348.0 (10R/28L) 220.75 121.15 126.9 132.7 348.0 (CENTER)	GND CON (TWR CENTER) 124.125 (TWR NORTH) 121.75 (OBND) 118.05 (TWR SOUTH) 121.9 (IBND) 226.675 (ALL TWSR)
--	---	--	--

CNLC DEL 121.6	CPDLC
--------------------------	-------



ELEV 680	D	TDZE 667
----------	---	----------



1200	4000	CGT	*LOC only.						
I-VQX DME ANTENNA		ALKYL INT I-VQX [1.5] RADAR	PONCC INT I-VQX [4.3] RADAR	CAKOS I-VQX [10.8] RADAR	FITAR I-VQX [13.9] RADAR	HANSO I-VQX [17.1] RADAR	JAVON I-VQX [20.2] RADAR	KEGNE I-VQX [23.3] RADAR	LYSIN I-VQX [26.5] RADAR
I-VQX [0.3]		*I-VQX [0.8]	2200	4000	5000	6000	7000	8000	9000
0.2		0.9	0.7	2.9 NM	6.4 NM	3.1 NM	3.1 NM	3.1 NM	3.1 NM
CATEGORY	A		B		C		D		
S-ILS 28L	867/18		200 (200-½)						
S-LOC 28L	1240/24		573 (600-½)		1240-1/4		573 (600-1/4)		
ALKYL FIX MINIMUMS (DUAL VOR RECEIVERS OR DME REQUIRED)									
S-LOC 28L	1060/24		393 (400-½)		1060/35		393 (400-5/8)		

FAF to MAP 4.7 NM					
Knots	60	90	120	150	180
Min:Sec	4:42	3:08	2:21	1:53	1:34

EC-3, 25 MAR 2021 to 22 APR 2021

EC-3, 25 MAR 2021 to 22 APR 2021