

LOC I-FJU <b>110.1</b>	APP CRS <b>045°</b>	Rwy ldg <b>8075</b>	TDZE <b>661</b>
		Apt Elev <b>680</b>	

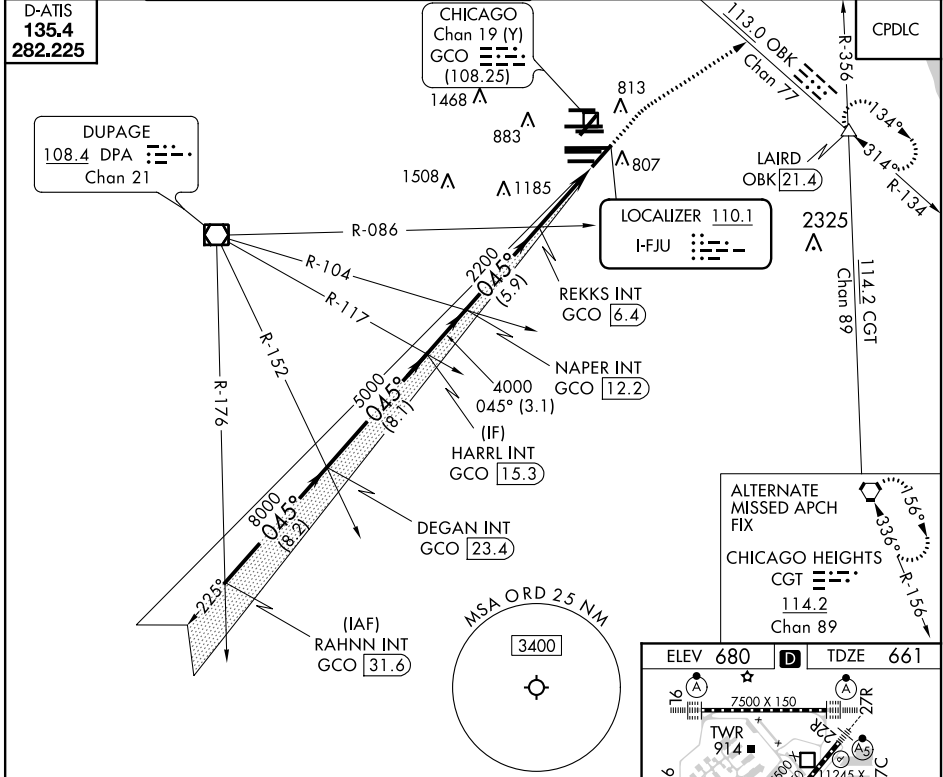
# ILS or LOC RWY 4R

CHICAGO O'HARE INTL (ORD)

RADAR required for procedure entry.		MALSR	MISSED APPROACH: Climb to 1200 then climbing right turn to 4000 on heading 060° and OBK VOR/DME R-134 to LAIRD INT/OBK 21.4 DME and hold.
Simultaneous approach authorized.			

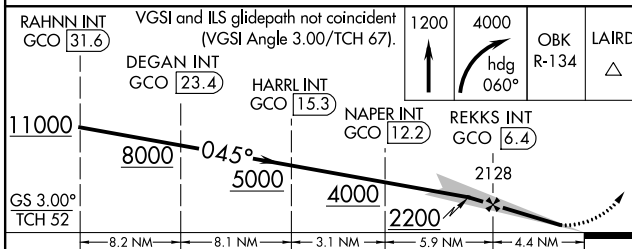
CHICAGO APP CON <b>119.0 292.125</b>	O'HARE TOWERS <b>128.15 348.0</b> (Rwy 9L/27R) <b>133.0 348.0</b> (10R/28L) <b>348.0</b> (CENTER)	GND CON (TWR CENTER) <b>121.75</b> (OBND) <b>121.9</b> (IBND)	CLNC DEL <b>121.6</b>
---	--	---	--------------------------

D-ATIS <b>135.4</b> <b>282.225</b>
--



**ALTERNATE MISSED APCH FIX**

CHICAGO HEIGHTS  
CGT **114.2**  
Chan 89



CATEGORY	A	B	C	D
S-ILS 4R	861/18		200 (200-½)	
S-LOC 4R	1160/24 499 (500-½)		1160/50 499 (500-1)	
CIRCLING	1220-1 540 (600-1)		1220-1½ 1460-2½ 540 (600-1½) 780 (800-2½)	

ELEV 680	TDZE 661
----------	----------

EC-3, 25 MAR 2021 to 22 APR 2021

EC-3, 25 MAR 2021 to 22 APR 2021