

LOC/DME I-OYG 111.9 Chan 56	APP CRS 093°	Rwy Idg 11245 TDZE 673 Apt Elev 680
---	------------------------	--

ILS or LOC RWY 9C

CHICAGO O'HARE INTL (ORD)

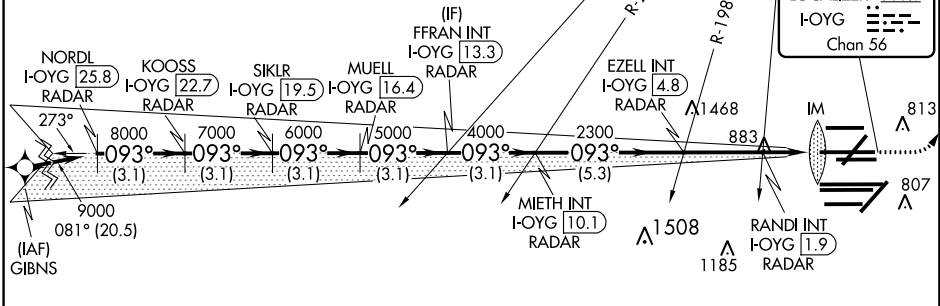
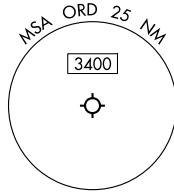
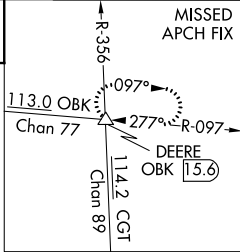
DME or RADAR required. From GIBNS: RNAV 1-GPS required. Aircraft not GPS equipped - RADAR required for procedure entry.

ALSF-2
MISSED APPROACH: Climb to 1200 then climbing left turn to 4000 on heading 037° and OBK VOR/DME R-097 to DEERE INT/OBK 15.6 DME and hold.

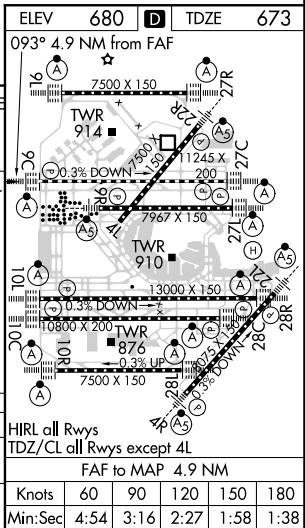
Simultaneous approach authorized. For inop ALS, increase S-LOC 9C Cat C/D visibility to 1½ SM.

CHICAGO APP CON 119.0 292.125	O'HARE TOWERS 128.15 348.0 (Rwy 9L/27R) 133.0 348.0 (110R/28L) 120.75 121.15 126.9 132.7 348.0 (CENTER)	GND CON (TWR NORTH) 124.125 (TWR SOUTH) 118.05 (ALL TWRs) 226.675	(TWR CENTER) 121.75 (OBND) 121.9 (IBND)	CLNC DEL 121.6
---	---	--	---	--------------------------

D-ATIS 135.4 282.225	MISSED APCH FIX	NORTHBROOK 113.0 OBK Chan 77	CPDLC
--	-----------------	------------------------------------	-------



NORDL I-OYG 25.8 RADAR	KOOSS I-OYG 22.7 RADAR	SIKLR I-OYG 19.5 RADAR	MUELL I-OYG 16.4 RADAR	FFRAN INT I-OYG 13.3 RADAR	EZZEL INT I-OYG 4.8 RADAR	RANDI INT I-OYG 1.9 RADAR	DEERE
8000	7000	6000	5000	4000	2300	1400	
3.1 NM	3.1 NM	3.1 NM	3.1 NM	3.1 NM	5.3 NM	2.9 NM	0.8 1.1 0.1
VGS and ILS glidepath not coincident (VGS Angle 3.00/TCH 72).							
*LOC only.							
*I-OYG DME ANTENNA IM							
*I-OYG 1.2 I-OYG 0.2							



CATEGORY	A	B	C	D
S-ILS 9C	873/18 200 (200-½)			
S-LOC 9C	1140/24	467 (500-½)	1140/50	467 (500-1)

ELEV	680	TDZE	673
093° 4.9 NM from FAF			
HIRL all Rwys			
TDZ/CL all Rwys except 4L			
FAF to MAP 4.9 NM			
Knots	60	90	120 150 180
Min:Sec	4:54	3:16	2:27 1:58 1:38

EC-3, 25 MAR 2021 to 22 APR 2021

EC-3, 25 MAR 2021 to 22 APR 2021