


LOC/DME I-JAV 110.5 Chan 42	APP CRS 093°	Rwy ldg 7709 TDZE 660 Apt Elev 680
--	------------------------	---

ILS or LOC RWY 9R

CHICAGO O'HARE INTL (ORD)

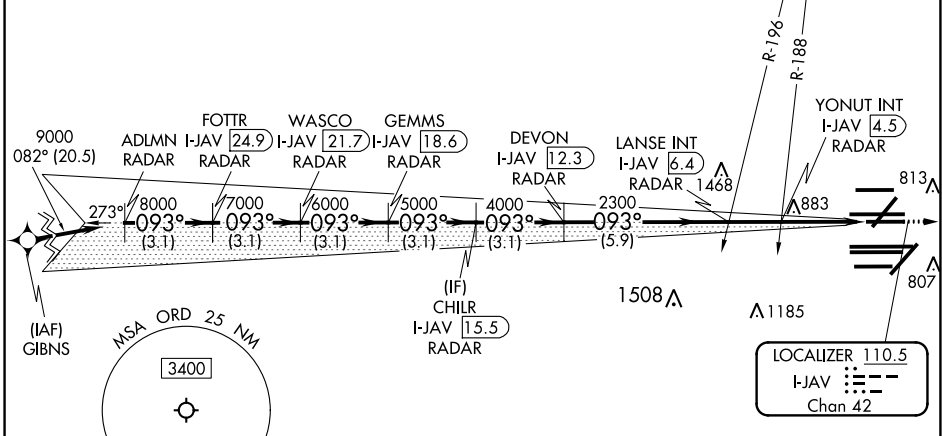
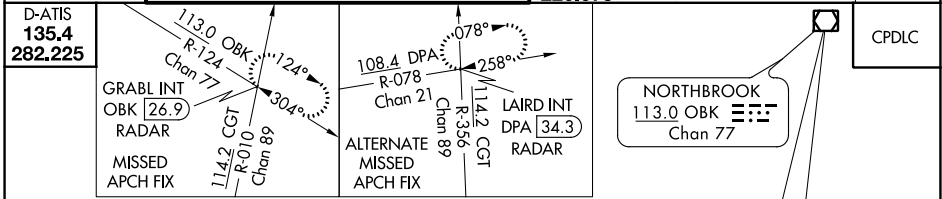
From GIBNS: RNAV 1-GPS required. RADAR or DME required.
Aircraft not GPS equipped: RADAR required for procedure entry.

Simultaneous approach authorized.
For inop ALS, increase S-LOC 9R Cat C/D visibility to 1 1/2 SM.

MALSR 

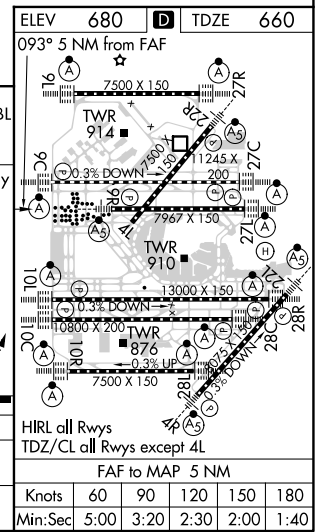
MISSED APPROACH: Climb to 4000 on OBK VOR/DME R-124 to GRABL INT/OBK 26.9 DME/RADAR and hold.

CHICAGO APP CON 119.0 292.125	O'HARE TOWERS 128.15 348.0 (Rwy 9L/27R) 126.9 348.0 (10R/28L) 132.7 348.0 (CENTER)	GND CON (TWR CENTER) 124.125 (TWR NORTH) 118.05 (TWR SOUTH) 226.675 (ALL TWRs)	121.75 (OBND) 121.9 (IBND)	CLNC DEL 121.6
---	--	--	---	--------------------------



VGSI and ILS glidepath not coincident (VGSI Angle 3.00/TCH 74).

ADLMN RADAR	FOTTR I-JAV 24.9 RADAR	WASCO I-JAV 21.7 RADAR	CHILR I-JAV 15.5 RADAR	LANSE INT I-JAV 6.4 RADAR	YONUT INT I-JAV 4.5 RADAR	DEVON I-JAV 12.3 RADAR	GEMMS I-JAV 18.6 RADAR
9000	8000	7000	6000	5000	4000	2300	1700
3.1 NM	3.1 NM	3.1 NM	3.1 NM	3.1 NM	5.9 NM	1.9 NM	1.8 1.3
CATEGORY	A	B	C	D			
S-ILS 9R	860/18		200 (200-1/2)				
S-LOC 9R	1160/24		500 (500-1/2)		1160/50 500 (500-1)		



EC-3, 25 MAR 2021 to 22 APR 2021

EC-3, 25 MAR 2021 to 22 APR 2021