

CHICAGO, ILLINOIS

AL-166 (FAA)

ILS PRM RWY 10C (CAT II & III) (CLOSE PARALLEL)

CHICAGO O'HARE INTL (ORD)

LOC/DME I-SXH	APP CRS	Rwy Idg	10540
108.95	093°	TDZE	669
Chan 26(Y)		Apt Elev	680

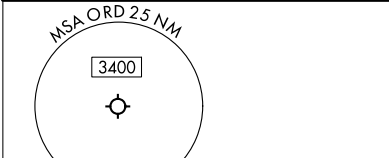
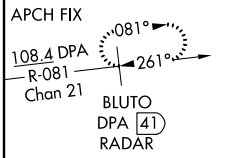
RNAV 1-GPS or RADAR required for procedure entry. DME or RADAR required.
From GIBNS: RNAV-1 GPS required.

▼ CAT II: RVR 1000 authorized with specific OPSPEC, MSPEC, or LOA approval and use of Autoland or HUD touchdown.
Simultaneous approach authorized. Use of FD or AP required during simultaneous operations. Dual VHF comm required. See additional requirements on AAUP.

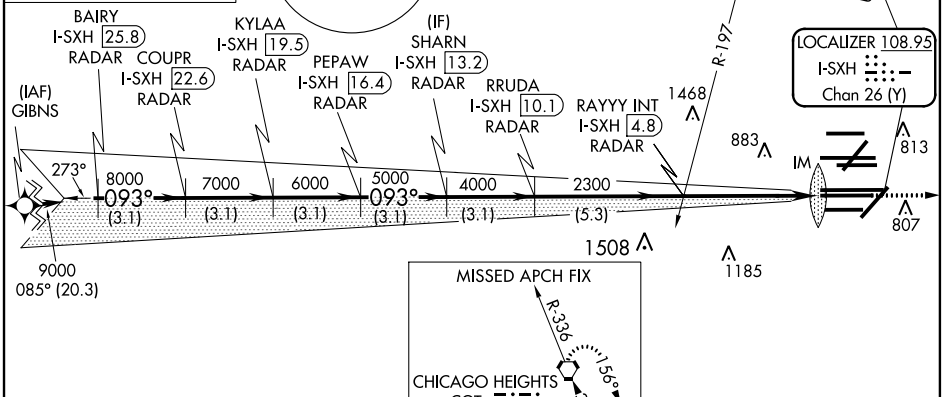
ALSF-2

MISSED APPROACH: Climb to 4000 on heading 093° and CGT VORTAC R-336 to CGT VORTAC and hold.

D-ATIS	CHICAGO APP CON	O'HARE TOWERS		GND CON (TWR CENTER)	(TWR NORTH)	(TWR SOUTH)	(TWR CENTER) (TWR SOUTH)
135.4	119.0	128.15	348.0	124.125	121.75	118.05	121.9
282.225	292.125	120.75	121.15	126.9	132.7	348.0	226.675
		PRM 119.625		(ALL TWR)			



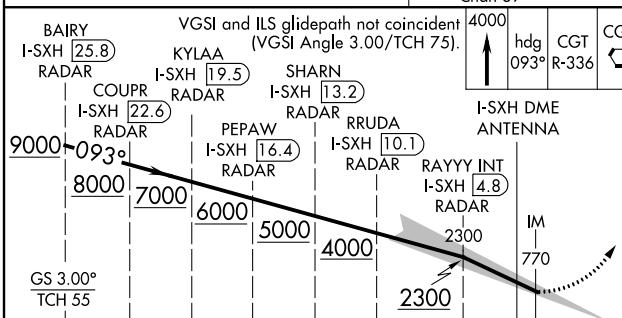
CLNC DEL	CPDLC
121.6	



9000 085° (20.3)

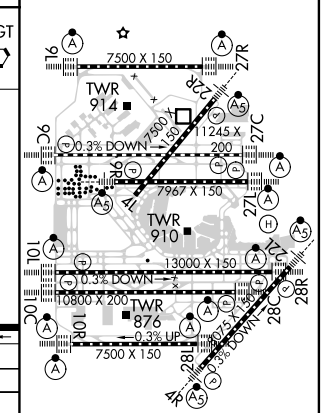
1508 Δ

1185 Δ



4000	hdg	CGT	CGT
↑	093°	R-336	
MISSED APCH FIX			
CHICAGO HEIGHTS CGT 114.2 Chan 89			

ELEV 680 **D** TDZE 669



CATEGORY II and III ILS - SPECIAL AIRCREW & AIRCRAFT CERTIFICATION REQUIRED

HIRL all Rwys
TDZ/CL all Rwys except 4L

CHICAGO, ILLINOIS
Amdt 1A 03JAN19

41°59'N-87°54'W

CHICAGO O'HARE INTL (ORD)

ILS PRM RWY 10C (CAT II & III) (CLOSE PARALLEL)

EC-3, 25 MAR 2021 to 22 APR 2021

EC-3, 25 MAR 2021 to 22 APR 2021