

LOC/DME I-BYW <b>110.9</b> Chan 46	APP CRS <b>091°</b>	Rwy Idg <b>7500</b> TDZE <b>680</b> Apt Elev <b>680</b>
--	------------------------	---

# ILS PRM Y RWY 10R (CLOSE PARALLEL)

CHICAGO O'HARE INTL (ORD)

RNAV 1-GPS or RADAR required for procedure entry. DME or RADAR required.  
From GIBNS: RNAV-1 GPS required.

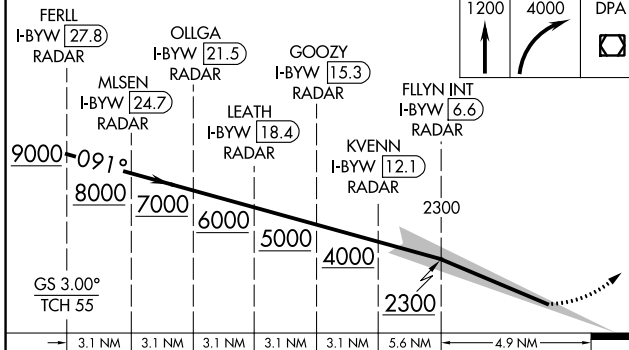
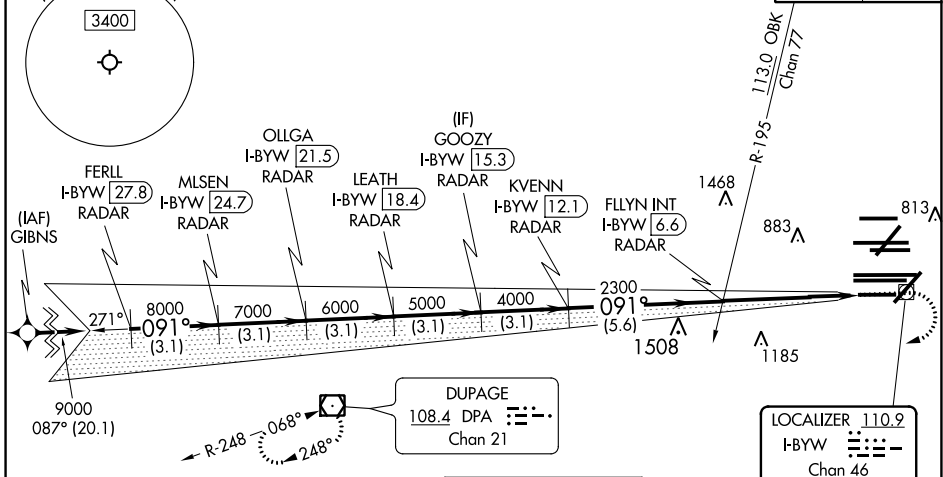
Simultaneous approach authorized. Use of FD or AP required during simultaneous operations. Dual VHF Comm requirements. See additional requirements on AAUP. Inop table does not apply to S-ILS 10R all Cats. Rwy 10R helicopter visibility reduction below 3/4 SM NA.

ALSF-2  
MISSED APPROACH: Climb to 1200 then climbing right turn to 4000 direct DPA VOR/DME and hold.

D-ATIS <b>135.4</b> <b>282.225</b>	CHICAGO APP CON <b>119.0 292.125</b>	O'HARE TOWERS <b>128.15 348.0</b> (Rwy 9L/27R) <b>133.0 348.0</b> (10R/28L) <b>120.75 121.15 126.9 132.7 348.0</b> (CENTER) <b>PRM 128.05</b>
--	---	--

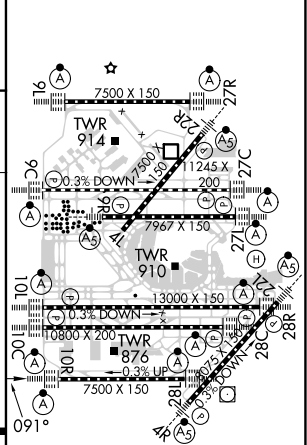
GND CON (TWR CENTER) <b>124.125</b> (TWR NORTH) <b>121.75</b> (OBND) <b>118.05</b> (TWR SOUTH) <b>121.9</b> (IBND) <b>226.675</b> (ALL TWRs)
---

CLNC DEL <b>121.6</b>	CPDLC
--------------------------	-------



CATEGORY	A	B	C	D
S-ILS 10R		930-3/4	250 (300-3/4)	

ELEV 680	TDZE 680
----------	----------



HIRL all Rwys  
TDZ/CL all Rwys except 4L

EC-3, 25 MAR 2021 to 22 APR 2021

EC-3, 25 MAR 2021 to 22 APR 2021