

LOC/DME I-ZJ <b>110.75</b> Chan 44 (Y)	APP CRS <b>094°</b>	Rwy Idg <b>7500</b> TDZE <b>680</b> Apt Elev <b>680</b>
--	------------------------	---

# ILS Z or LOC Z RWY 10R

CHICAGO O'HARE INTL (ORD)

RNAV 1-GPS or RADAR required for procedure entry. DME or RADAR required.

From GIBNS: RNAV-1 GPS required.

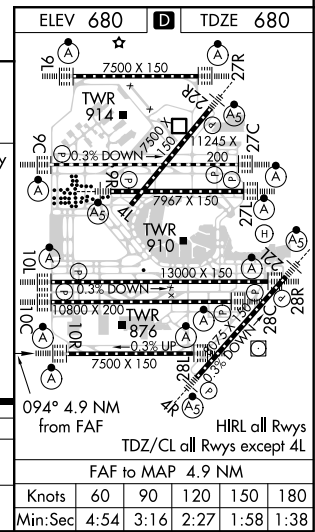
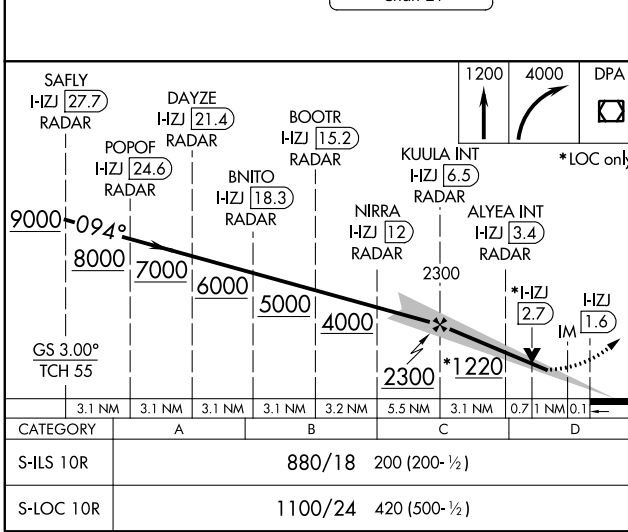
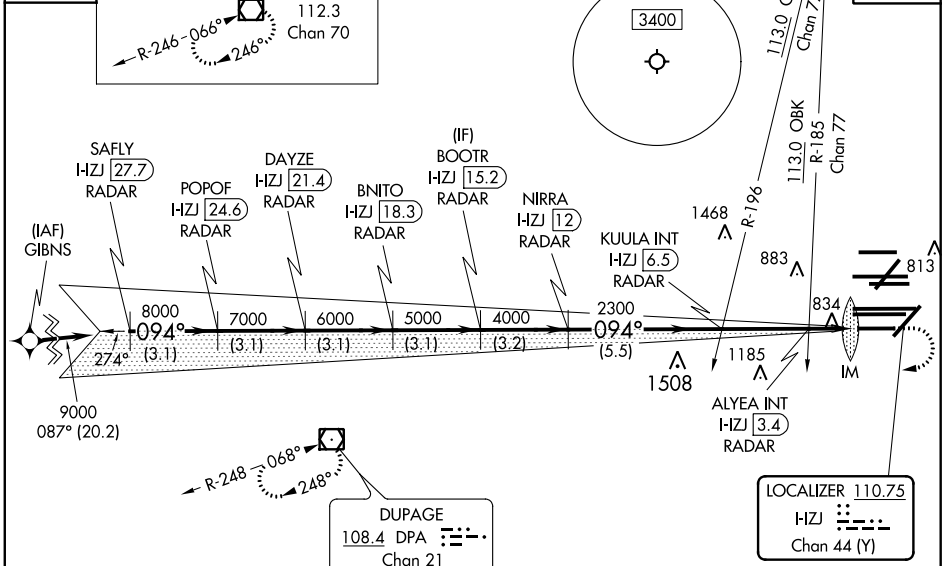
Simultaneous approach authorized.  
For inop ALS, increase S-LOC 10R Cat C and D visibility to RVR 6000.



MISSED APPROACH: Climb to 1200 then climbing right turn to 4000 direct DPA VOR/DME and hold.

CHICAGO APP CON <b>119.0 292.125</b>	O'HARE TOWERS <b>128.15 348.0</b> (Rwy 9L/27R) <b>133.0 348.0</b> (10R/28L) <b>126.9 132.7 348.0</b> (CENTER)	GND CON (TWR CENTER) <b>124.125</b> (TWR NORTH) <b>118.05</b> (TWR SOUTH) <b>226.675</b> (ALL TWRs)	<b>121.75</b> (OBND) <b>121.9</b> (IBND)	CLNC DEL <b>121.6</b>
---	--	--	---	--------------------------

D-ATIS <b>135.4</b> <b>282.225</b>	ALTERNATE MISSED APCH FIX	JOLIET JOT 112.3 Chan 70	CPDLC
--	---------------------------	-----------------------------------	-------



CHICAGO, ILLINOIS Orig-B 03JAN19	41°59'N-87°54'W	CHICAGO O'HARE INTL (ORD) ILS Z or LOC Z RWY 10R
-------------------------------------	-----------------	---

EC-3, 25 MAR 2021 to 22 APR 2021

EC-3, 25 MAR 2021 to 22 APR 2021