

O'HARE SIX DEPARTURE

EC-3, 25 MAR 2021 to 22 APR 2021

TOP ALTITUDE:
5000

SPECIAL INSTRUCTIONS: For appropriate departure control frequency, see graphic. Use frequency depicted within the sector where first navaid/fix for your route is located (sectors indicated by dashed lines; frequencies indicated in dashed box outlines).

NOTE: All turbo-jet departures in all directions, maintain 250K until advised by ATC.

CINC DEL
121.6
CPDLC

KEELER 116.6 ELX
Chan 113
N42°08.66'
W86°07.36'
L-28, H-5-10

CHICAGO DEP CON EAST/NORTH
125.0 337.4

GIPPER 115.4 GJ
Chan 101
N41°46.12'-W86°19.11'
L-28, H-5-10

PEOTONE 113.2 EON
Chan 79
N41°16.18'-W87°47.46'
L-28

CHICAGO DEP CON SOUTH
126.625 327.075

ROBERTS 116.8 RBS
Chan 115
N40°34.90'-W88°09.86'
L-27, H-5

PETTY N42°49.64'
W87°38.04'
L-28

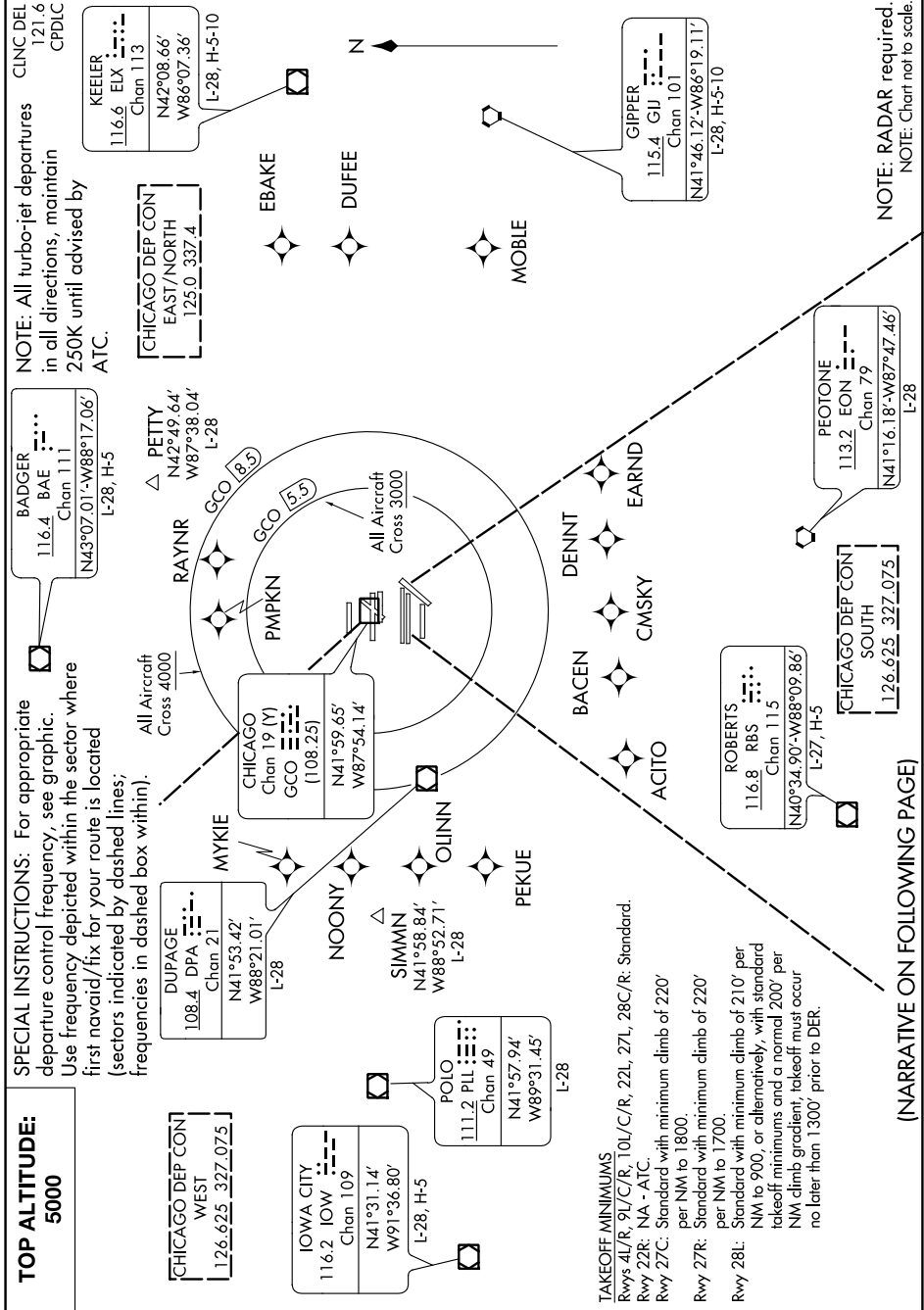
DUPAGE 108.4 DPA
Chan 21
N41°53.42'
W88°21.01'
L-28

IOWA CITY 116.2 IOW
Chan 109
N41°31.14'
W91°36.80'
L-28, H-5

POLO 111.2 PLL
Chan 49
N41°57.94'
W89°31.45'
L-28

CHICAGO Chan 19 (Y) GCO
(108.25)
N41°59.65'
W87°54.14'

All Aircraft
Cross 3000



NOTE: RADAR required.
NOTE: Chart not to scale.

(NARRATIVE ON FOLLOWING PAGE)

EC-3, 25 MAR 2021 to 22 APR 2021

O'HARE SIX DEPARTURE