

|  |                        |  |
|--|------------------------|--|
| WAAS<br>CH <b>81934</b><br><b>W10B</b> | APP CRS<br><b>093°</b> | Rwy Idg <b>10540</b><br>TDZE <b>669</b><br>Apt Elev <b>680</b> |
|--|------------------------|--|

# RNAV (GPS) RWY 10C

CHICAGO O'HARE INTL (ORD)

**⚠** DME/DME RNP-0.3 NA. Simultaneous approach authorized. For uncompensated Baro-VNAV systems, LNAV/VNAV NA below -19°C (-2°F) or above 54°C (130°F). LNAV procedure NA during simultaneous operations. Use of FD or AP providing RNAV track guidance required during simultaneous operations.

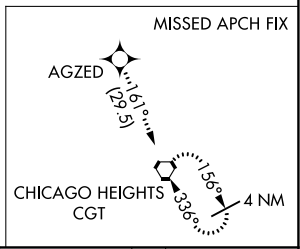
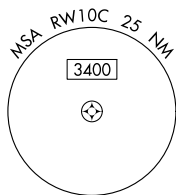
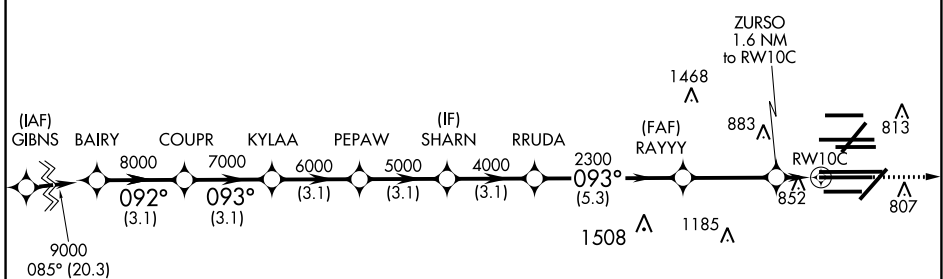
ALSF-2  
**Ⓐ**

**MISSED APPROACH:**  
Climb to 4000 direct AGZED and on track 161° to CGT VORTAC and hold.

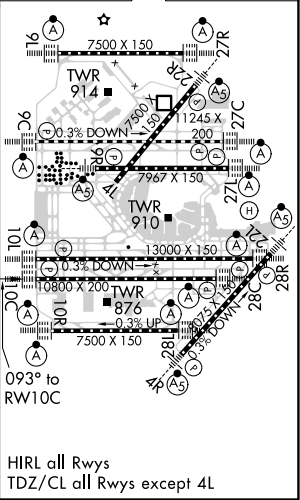
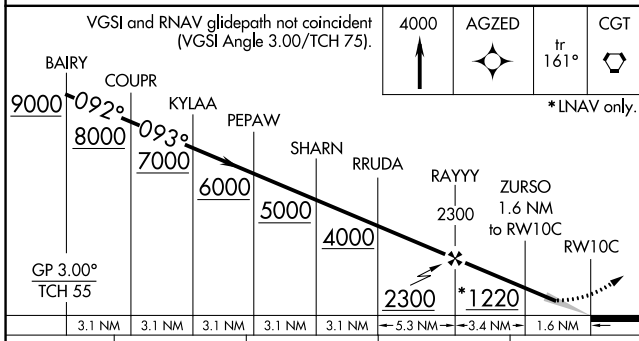
|  |   |   |  |  |  |   |  |
|--|---|---|--|--|--|---|--|
| D-ATIS<br><b>135.4</b><br><b>282.225</b> | CHICAGO APP CON<br><b>119.0 292.125</b> | O'HARE TOWERS<br><b>128.15 348.0</b> (Rwy 9L/27R) <b>133.0 348.0</b> (10R/28L)<br><b>120.75 121.15 126.9 132.7 348.0</b> (CENTER) |  |  |  | GND CON (TWR NORTH)<br><b>124.125</b><br><b>118.05</b> (TWR SOUTH)<br><b>226.675</b> (ALL TWRs) | (TWR CENTER) <b>121.75</b> (OBND)<br>(TWR SOUTH) <b>121.9</b> (IBND) |
|--|---|---|--|--|--|---|--|

## RADAR REQUIRED

|                          |       |
|--------------------------|-------|
| CNLC DEL<br><b>121.6</b> | CPDLC |
|--------------------------|-------|



|          |          |          |
|----------|----------|----------|
| ELEV 680 | <b>D</b> | TDZE 669 |
|----------|----------|----------|



|              |         |             |             |             |
|--------------|---------|-------------|-------------|-------------|
| CATEGORY     | A       | B           | C           | D           |
| LPV DA       | 869/18  |             | 200 (200-½) |             |
| LNAV/VNAV DA | 1056/40 |             | 387 (400-¾) |             |
| LNAV MDA     | 1120/24 | 451 (500-½) | 1120/45     | 451 (500-¾) |

HIRL all Rwys  
TDZ/CL all Rwys except 4L

EC-3, 25 MAR 2021 to 22 APR 2021

EC-3, 25 MAR 2021 to 22 APR 2021