


WAAS CH <b>42804</b> <b>W28A</b>	APP CRS <b>273°</b>	Rwy Idg <b>13000</b> TDZE <b>651</b> Apt Elev <b>680</b>
--	------------------------	--

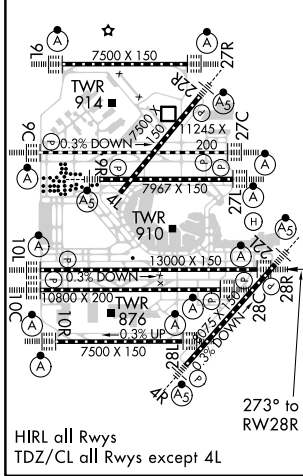
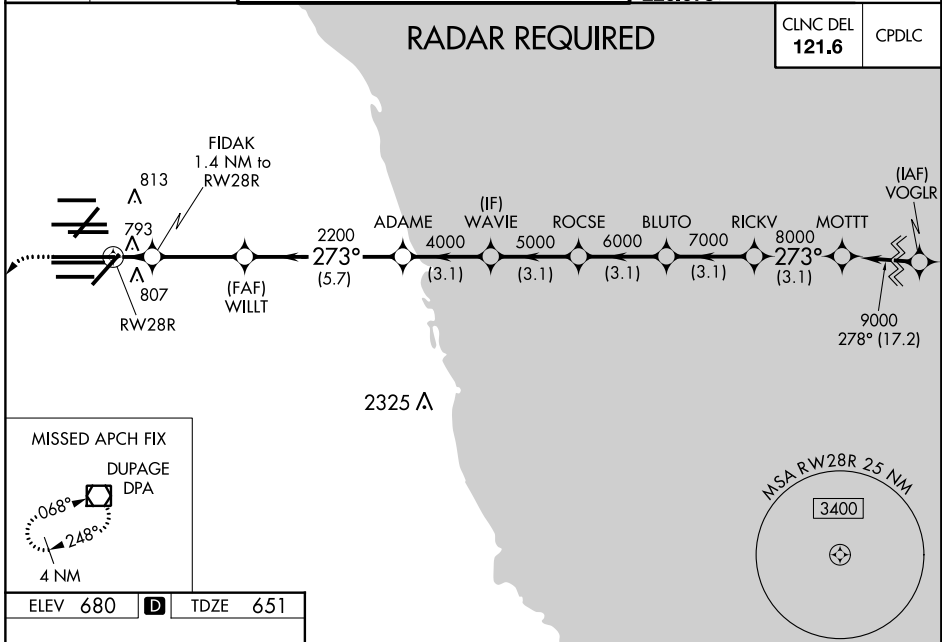
# RNAV (GPS) RWY 28R

CHICAGO O'HARE INTL (ORD)

▼ For uncompensated Baro-VNAV systems, LNAV/VNAV NA below -19°C (-2°F) or above 54°C (130°F). Simultaneous approach authorized. DME/DME RNP-0.3 NA. For inop ALSF-2, increase LNAV/VNAV all Cats visibility to 1½ mile and LNAV Cats C/D visibility to RVR 6000. LNAV procedure NA during simultaneous operations. Use of FD or AP providing RNAV track guidance required during simultaneous operations.

ALSF-2  
  
 MISSED APPROACH: Climb to 1200 then climbing left turn to 4000 direct DPA VOR/DME and hold.

D-ATIS <b>135.4</b>	CHICAGO APP CON <b>119.0 292.125</b>	O'HARE TOWERS <b>128.15 348.0</b> (Rwy 9L/27R) <b>133.0 348.0</b> (10R/28L) <b>120.75 121.15 126.9 132.7 348.0</b> (CENTER)	GND CON (TWR CENTER) <b>124.125</b> (TWR NORTH) <b>121.75</b> (OBND) <b>118.05</b> (TWR SOUTH) <b>121.9</b> (IBND) <b>226.675</b> (ALL TWRs)
------------------------	---	--	---



1200	4000	DPA	VGSI and RNAV glidepath not coincident (VGSI Angle 3.00/TCH 70).
*LNAV only.			
1.4	3.3 NM	5.7 NM	3.1 NM 3.1 NM 3.1 NM 3.1 NM
CATEGORY	A	B	C D
LPV DA	851/18		200 (200-½)
LNAV/VNAV DA	1041/45		390 (400-¾)
LNAV MDA	1060/24	409 (400-½)	1060/40 409 (400-¾)

GP 3.00° TCH 54

EC-3, 25 MAR 2021 to 22 APR 2021

EC-3, 25 MAR 2021 to 22 APR 2021