

WAAS CH 58143 W09D	APP CRS 093°	Rwy ldg TDZE Apt Elev	11245 673 680
--	------------------------	-----------------------------	--


RNAV (GPS) RWY 9C

CHICAGO O'HARE INTL (O.R.D.)

RNP APCH.

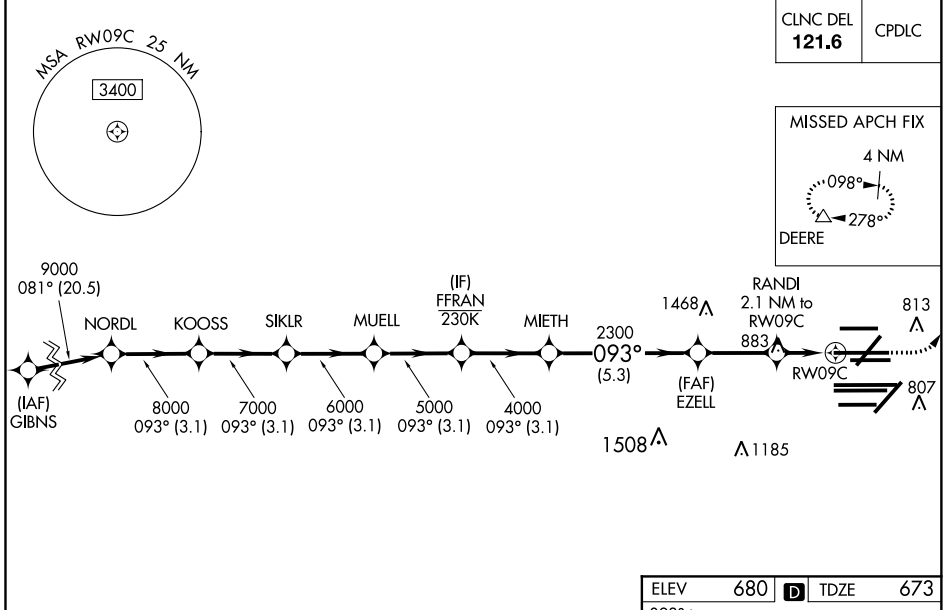
▼ Simultaneous approach authorized. LNAV procedure NA during simultaneous operations. Use of FD or AP required during simultaneous operations. For uncompensated Baro-VNAV systems, LNAV/VNAV NA below -19°C or above 54°C. For inop ALS, increase LNAV/VNAV all cats visibility to RVR 4500 and LNAV Cat C/D to 1% SM.

ALSF-2



MISSED APPROACH: Climb to 1200 then climbing left turn to 4000 direct DEERE and hold.

D-ATIS 135.4 282.225	CHICAGO APP CON 119.0 292.125	O'HARE TOWERS 128.15 348.0 (Rwy 9L/27R) 133.0 348.0 (10R/28L) 120.75 121.15 126.9 132.7 348.0 (CENTER)	124.125 (TWR NORTH) 118.05 (TWR SOUTH) 226.675 (ALL TWRs)	(TWR CENTER) 121.75 (OBND) 121.9 (IBND)
--	--	--	--	---

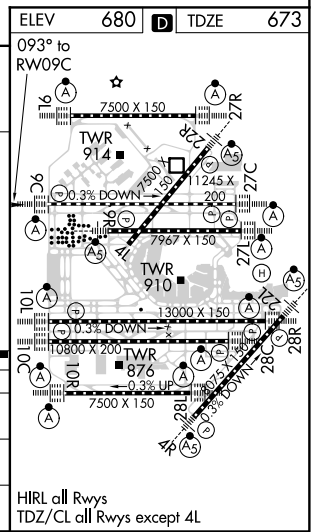


VGSI and RNAV glidepath not coincident (VGSI Angle 3.00/TCH 72).

	1200	4000	DEERE
	↑	↘	△
	*LNAV only.		

	9000	8000	7000	6000	5000	4000	2300	1400
	093°	093°	093°	093°	093°	093°	093°	093°
	GP 3.00°							
	TCH 55							
	-3.1 NM	3.1 NM	3.1 NM	3.1 NM	3.1 NM	5.3 NM	2.8 NM	0.9 - 1.2

CATEGORY	A	B	C	D
LPV DA		873/18	200 (200-½)	
LNAV/VNAV DA		976/24	303 (300-½)	
LNAV MDA	1140/24	467 (500-½)	1140/50	467 (500-1)



EC-3, 25 MAR 2021 to 22 APR 2021

EC-3, 25 MAR 2021 to 22 APR 2021